

## PPA Series



### Ordering code

Ordering code of valves

**PPA 6**

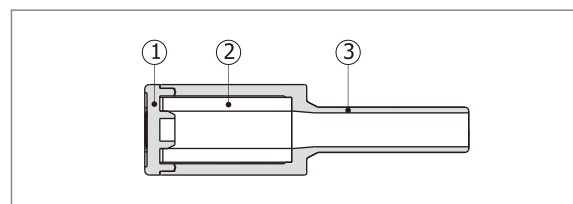
① ②

① Silencer Type	② Thread connection
PPA: Plug-in Silencer	6: $\Phi 6$ 8: $\Phi 8$ 10: $\Phi 10$ 12: $\Phi 12$

### Specification

Model	PPA6	PPA8	PPA10	PPA12
Silencing effect(dB)(0.5MPa)	25	25	25	25
Operating pressure	0 ~ 10kgf/cm <sup>2</sup> (0 ~ 1.0MPa)			
Negative pressure	-750mmHg(10Torr)			
Proof pressure	1.5MPa			
Temperature range	-20 ~ 70°C			

### Inner structure and material of major parts

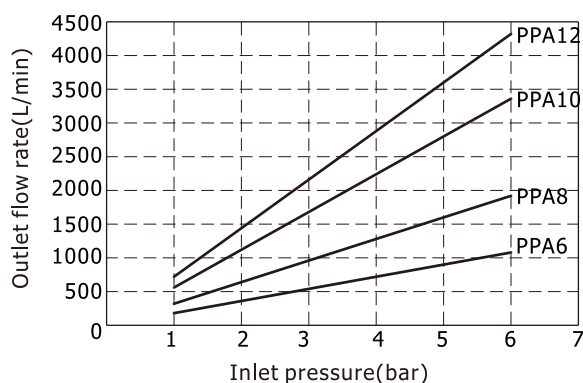


### Product feature

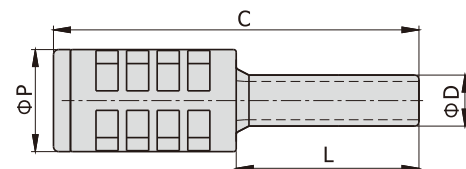
1. Full resin, excellent noise reduction and suitable for copper free environment.
2. Plug-in design, mount quickly and easily.

NO.	Name	Material
1	Cap	POM
2	Silencer filter	PE
3	Body	POM

### Flowrate characteristic



### Dimensions



[Unit: mm]

Model\Item	C(Lenght)	D	L	P	Weight(g)
PPA6	43	6	21.5	12	2.0
PPA8	45	8	23	14	2.9
PPA10	61.5	10	26	16	5.3
PPA12	71.5	12	28	20	9.8