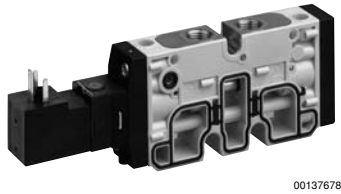


Valve terminal systems → Valve terminal systems

Valves, Series TC08

► Qn = 600 - 800 l/min ► plate connection, pipe connection ► compressed air connection output: G 1/8 ► Electr. connection: Plug, ISO 15217, form C ► Can be assembled into blocks ► Manual override: with detent, without detent ► double solenoid



Version	Spool valve, zero overlap
Pilot	external
Sealing principle	soft sealing
Blocking principle	Plate principle
Working pressure min./max.	-0.9 bar / 10 bar
Control pressure min./max.	See table below
Ambient temperature min./max.	-10 °C / +50 °C
Medium temperature min./max.	-10 °C / +50 °C
Medium	Compressed air
Max. particle size	5 µm
Oil content of compressed air	0 mg/m ³ - 5 mg/m ³
Connector standard	ISO 15217:2000
Protection class with electrical connector/ plug	IP 65
Duty cycle	100 %
Generic emission standard in accordance with	EN 50081:1992
Materials:	
Housing	Polyamide, fiber-glass reinforced
Seals	Acrylonitrile Butadiene Rubber; Polyurethane
Front plate	Polyamide, fiber-glass reinforced

Technical Remarks
<ul style="list-style-type: none"> ■ The pressure dew point must be at least 15 °C under ambient and medium temperature and may not exceed 3 °C. ■ The oil content of air pressure must remain constant during the life cycle. ■ Use only the approved oils from Bosch Rexroth, see chapter „Technical information“.

Operating voltage			Voltage tolerance			Power consumption	Switch-on power		Holding power	
DC	AC 50 Hz	AC 60 Hz	DC	AC 50 Hz	AC 60 Hz	DC	AC 50 Hz	AC 60 Hz	AC 50 Hz	AC 60 Hz
						W	VA	VA	VA	VA
-	24 V	24 V	-	-10% / +10%	-10% / +10%	-	2.2	2	1.6	1.4
24 V	-	-	-10% / +10%	-	-	2	-	-	-	-
-	110 V	110 V	-	-10% / +10%	-10% / +10%	-	2.2	2	1.6	1.4
-	230 V	230 V	-	-10% / +10%	-10% / +10%	-	2.2	2	1.6	1.4

Valve terminal systems → Valve terminal systems

Valves, Series TC08

► Qn = 600 - 800 l/min ► plate connection, pipe connection ► compressed air connection output: G 1/8 ► Electr. connection: Plug, ISO 15217, form C ► Can be assembled into blocks ► Manual override: with detent, without detent ► double solenoid

	MO	Compressed air connection	Operating voltage			Flow conductance		Flow rate value	Nominal resistance	Control pressure min./max.	Part No.	
			Output	DC	AC 50 Hz	AC 60 Hz	b					C
												[l/(s*bar)]
	NC/NC		G 1/8	- 24 V 24 V - 110 V - 230 V	- 24 V - 110 V 230 V	- 24 V - 110 V 230 V	0.27	2.8	600	185 280 3700 14700	2.5 / 10	R422102061 R422102062 R422102063 R422102064
	NO/NO		G 1/8	- 24 V 24 V - 110 V - 230 V	- 24 V - 110 V 230 V	- 24 V - 110 V 230 V	0.27	2.8	600	185 280 3700 14700	2.5 / 10	R422102065 R422102066 R422102067 R422102068
	NC/NO		G 1/8	- 24 V 24 V - 110 V - 230 V	- 24 V - 110 V 230 V	- 24 V - 110 V 230 V	0.27	2.8	600	185 280 3700 14700	2.5 / 10	R422102069 R422102070 R422102071 R422102072
	NC/NC		G 1/8	- 24 V 24 V - 110 V - 230 V	- 24 V - 110 V 230 V	- 24 V - 110 V 230 V	0.27	2.8	600	185 280 3700 14700	2.5 / 10	R422102073 R422102074 R422102075 R422102076
	NO/NO		G 1/8	- 24 V 24 V - 110 V - 230 V	- 24 V - 110 V 230 V	- 24 V - 110 V 230 V	0.27	2.8	600	185 280 3700 14700	2.5 / 10	R422102077 R422102078 R422102079 R422102080
	NC/NO		G 1/8	- 24 V 24 V - 110 V - 230 V	- 24 V - 110 V 230 V	- 24 V - 110 V 230 V	0.27	2.8	600	185 280 3700 14700	2.5 / 10	R422102081 R422102082 R422102083 R422102084
	-		G 1/8	- 24 V 24 V - 110 V - 230 V	- 24 V - 110 V 230 V	- 24 V - 110 V 230 V	0.36	3.5	800	185 280 3700 14700	2.5 / 10	R422000080 0820060751 0820060752 0820060753
	-		G 1/8	- 24 V 24 V - 110 V - 230 V	- 24 V - 110 V 230 V	- 24 V - 110 V 230 V	0.36	3.5	800	185 280 3700 14700	3 / 10	R422000082 0820060761 0820060762 0820060763
	-		G 1/8	- 24 V 24 V - 110 V - 230 V	- 24 V - 110 V 230 V	- 24 V - 110 V 230 V	0.36	3.5	800	185 280 3700 14700	2 / 10	R422000084 0820060771 0820060772 0820060773
	-		G 1/8	- 24 V 24 V - 110 V - 230 V	- 24 V - 110 V 230 V	- 24 V - 110 V 230 V	0.36	3.5	800	185 280 3700 14700	2.5 / 10	R422000081 0820060851 0820060852 0820060853
	-		G 1/8	- 24 V 24 V - 110 V - 230 V	- 24 V - 110 V 230 V	- 24 V - 110 V 230 V	0.36	3.5	800	185 280 3700 14700	3 / 10	R422000083 0820060861 0820060862 0820060863

Valve terminal systems → Valve terminal systems

Valves, Series TC08

► Qn = 600 - 800 l/min ► plate connection, pipe connection ► compressed air connection output: G 1/8 ► Electr. connection: Plug, ISO 15217, form C ► Can be assembled into blocks ► Manual override: with detent, without detent ► double solenoid

	MO	Compressed air connection	Operating voltage			Flow conductance		Flow rate value	Nominal resistance	Control pressure min./max.	Part No.	
			Output	DC	AC 50 Hz	AC 60 Hz	b					C
	-	□	G 1/8	- 24 V	24 V - 110 V - 230 V	24 V - 110 V - 230 V	0.36	3.5	800	185 280 3700 14700	2 / 10	R422000085 0820060871 0820060872 0820060873
	-	□	G 1/8	- 24 V	24 V - 110 V - 230 V	24 V - 110 V - 230 V	0.34	3	700	185 280 3700 14700	3 / 10	R422000086 0820061751 0820061752 0820061753
	-	□	G 1/8	- 24 V	24 V - 110 V - 230 V	24 V - 110 V - 230 V	0.34	3	700	185 280 3700 14700	3 / 10	R422000088 0820061761 0820061762 0820061763
	-	□	G 1/8	- 24 V	24 V - 110 V - 230 V	24 V - 110 V - 230 V	0.34	3	700	185 280 3700 14700	3 / 10	R422000090 0820061771 0820061772 0820061773
	-	□	G 1/8	- 24 V	24 V - 110 V - 230 V	24 V - 110 V - 230 V	0.34	3	700	185 280 3700 14700	3 / 10	R422000087 0820061851 0820061852 0820061853
	-	□	G 1/8	- 24 V	24 V - 110 V - 230 V	24 V - 110 V - 230 V	0.34	3	700	185 280 3700 14700	3 / 10	R422000089 0820061861 0820061862 0820061863
	-	□	G 1/8	- 24 V	24 V - 110 V - 230 V	24 V - 110 V - 230 V	0.34	3	700	185 280 3700 14700	3 / 10	R422000091 0820061871 0820061872 0820061873

Part No.	Switch-on time	Switch-off time	Weight
	[ms]	[ms]	[kg]
R422102061 R422102062 R422102063 R422102064	10	14	0.166
R422102065 R422102066 R422102067 R422102068	10	14	0.166
R422102069 R422102070 R422102071 R422102072	10	14	0.166

MO = Manual override
Nominal flow Qn at 6 bar and Δp = 1 bar

Valve terminal systems → Valve terminal systems

Valves, Series TC08

► Qn = 600 - 800 l/min ► plate connection, pipe connection ► compressed air connection output: G 1/8 ► Electr. connection: Plug, ISO 15217, form C ► Can be assembled into blocks ► Manual override: with detent, without detent ► double solenoid

Part No.	Switch-on time	Switch-off time	Weight
	[ms]	[ms]	[kg]
R422102073 R422102074 R422102075 R422102076	10	14	0.166
R422102077 R422102078 R422102079 R422102080	10	14	0.166
R422102081 R422102082 R422102083 R422102084	10	14	0.166
R422000080 0820060751 0820060752 0820060753	14	18	0.125
R422000082 0820060761 0820060762 0820060763	14	17	0.125
R422000084 0820060771 0820060772 0820060773	10	10	0.157
R422000081 0820060851 0820060852 0820060853	14	18	0.125
R422000083 0820060861 0820060862 0820060863	14	17	0.125
R422000085 0820060871 0820060872 0820060873	10	10	0.157
R422000086 0820061751 0820061752 0820061753	10	11	0.165
R422000088 0820061761 0820061762 0820061763	10	11	0.165
R422000090 0820061771 0820061772 0820061773	10	11	0.165

MO = Manual override

Nominal flow Qn at 6 bar and $\Delta p = 1$ bar

Valve terminal systems → Valve terminal systems

Valves, Series TC08

► Qn = 600 - 800 l/min ► plate connection, pipe connection ► compressed air connection output: G 1/8 ► Electr. connection: Plug, ISO 15217, form C ► Can be assembled into blocks ► Manual override: with detent, without detent ► double solenoid

Part No.	Switch-on time	Switch-off time	Weight
	[ms]	[ms]	[kg]
R422000087 0820061851 0820061852 0820061853	10	11	0.165
R422000089 0820061861 0820061862 0820061863	10	11	0.165
R422000091 0820061871 0820061872 0820061873	10	11	0.165
MO = Manual override Nominal flow Qn at 6 bar and $\Delta p = 1$ bar			