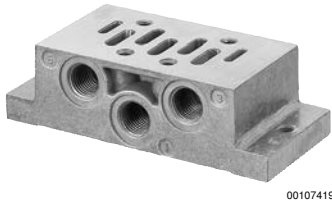


## Valve systems → Base plates, according to standard

**Single subbase, thread connections on the side**

► standard: ISO 5599-1 ► Frame size: ISO 1 - ISO 4 ► compressed air connection output: G 1/4 - G 3/4 ► Reversed pressure supply permissible



Ambient temperature min./max.	-25 °C / +70 °C
Medium temperature min./max.	-25 °C / +70 °C
Medium	Compressed air
Working pressure min./max.	See table below
Number of valve positions	1
Direction of pneumatic port (1)	On the side
Direction of pneumatic port (3,5)	On the side
Direction of pneumatic port (2,4)	On the side
Direction of pneumatic port (12)	On the side
Direction of pneumatic port (14)	On the side
Exhaust (3,5)	With directional exhaust (3/5) Ports separated
Materials:	
Subbase	Die-cast aluminum

**Technical Remarks**

- The pressure dew point must be at least 15 °C under ambient and medium temperature and may not exceed 3 °C.
- The oil content of air pressure must remain constant during the life cycle.
- Use only the approved oils from Bosch Rexroth, see chapter „Technical information“.

Frame size	Compressed air connection					Working pressure min./max.	Part No.
	Input	Output	Exhaust	Pilot control exhaust	Pilot connection		
	[1]	[2 / 4]	[3 / 5]	[12]	[14]		
ISO 1	G 1/4	G 1/4	G 1/4	G 1/8	G 1/8	-0.95 / 16	<b>1825503143</b>
ISO 2	G 3/8	G 3/8	G 3/8	G 1/8	G 1/8	-0.95 / 16	<b>1825503146</b>
ISO 3	G 1/2	G 1/2	G 1/2	G 1/8	G 1/8	-0.95 / 16	<b>1825503149</b>
ISO 4	G 3/4	G 3/4	G 3/4	G 1/8	G 1/8	-0.95 / 10	<b>8985041404</b>

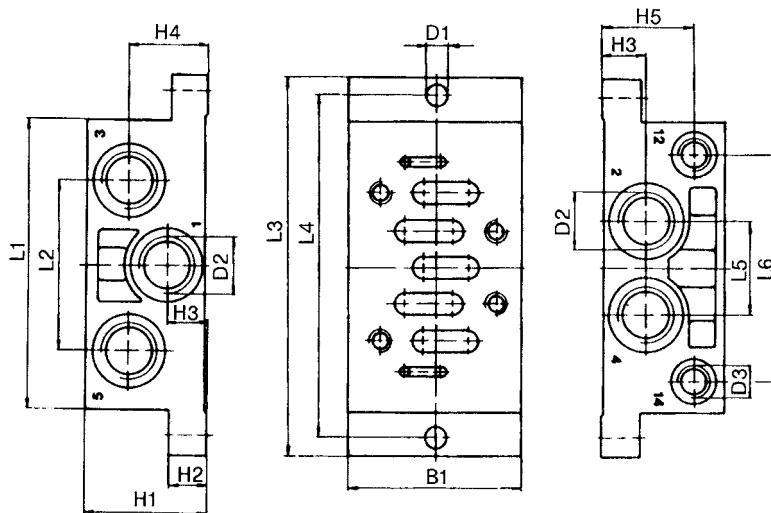
Part No.	Grid dimension	Weight
		[kg]
<b>1825503143</b>	48	0.17
<b>1825503146</b>	57	0.28
<b>1825503149</b>	71	0.34
<b>8985041404</b>	85	0.99

## Valve systems → Base plates, according to standard

**Single subbase, thread connections on the side**

► standard: ISO 5599-1 ► Frame size: ISO 1 - ISO 4 ► compressed air connection output: G 1/4 - G 3/4 ► Reversed pressure supply permissible

## Dimensions



D581\_140

Part No.	B1	H1	H2	H3	H4	H5	D1	D2 *)	D3 *)	L1	L2	L3
<b>1825503143</b>	48	32	10	11,5	21.5	23.5	5.5	G 1/4	G 1/8	84	43	110
<b>1825503146</b>	57	40	13	14	26	30	6.6	G 3/8	G 1/8	95	56	124
<b>1825503149</b>	71	32	18	17	17	22	6.6	G 1/2	G 1/8	119	68	149
<b>8985041404</b>	85	42	19	22	22	30	9	G 3/4	G 1/8	148	90	186

Part No.	L4	L5	L6								
<b>1825503143</b>	98	24	58								
<b>1825503146</b>	112	30	74								
<b>1825503149</b>	136	32	90								
<b>8985041404</b>	170	42	111								

\*) Ports