

Electrical connection technologies → Electrical connection technologies

Electrical connectors, Series CN1

► ISO 4400 ► Electrical connector, form A

Ambient temperature min./max.	-40 °C / +90 °C
Protection class	IP 65
mounting screw tightening torque	0.4 Nm



00110264_a

Technical Remarks

- The specified protection class is valid only in assembled and tested state.

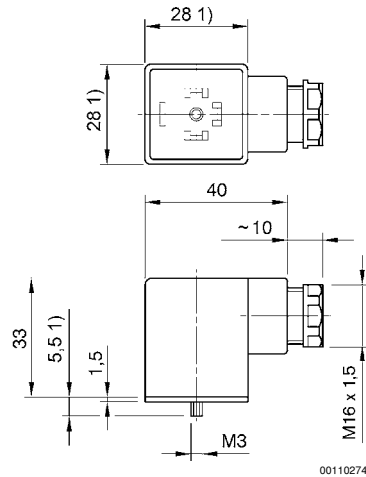
	Cable fitting	Operating voltage		Max. current [A]	Contact assignment	Cable exit	Protective circuit	Part No.
		DC [V]	AC [V]					
	M16x1,5	300	-	10	2+E	angled 90°	-	1834484048
	M16x1,5	300	-	10	3+E	angled 90°	-	1834484059
	M16x1,5	24	24	-	2+E	angled 90°	Z-diode	1834484101
	M16x1,5	-	110	-	2+E	angled 90°	Varistor	1834484102
		-	230	-				1834484103
	M20x1,5	24	-	8	3+E	angled 90°	-	8941012462

Part No.	suitable cable-Ø min./max [mm]	number of plug options 1	LED status display	Housing color	Weight [kg]	Note
1834484048	5 / 8	4 positions each 90°	-	Black	0.03	2); 4)
1834484059	5 / 8	4 positions each 90°	-	Black	0.03	2); 4)
1834484101	5 / 8	4 positions each 90°	Yellow	Transparent	0.03	3); 5)
1834484102	5 / 8	4 positions each 90°	RedRed	Transparent	0.03	2); 4)
1834484103			RedRed		0.03	
8941016112			Green		0.025	
8941012462	4.5 / 11	1 position	GreenRed	Transparent	0.03	1); 2); 4)

- 1) electrical connector with status display (2 LED) for pressure sensor
- 2) Profile seal
- 3) Flat gasket
- 4) Seal: caoutchouc/butadiene caoutchouc
- 5) Seal: Silicone caoutchouc

Electrical connection technologies → Electrical connection technologies**Electrical connectors, Series CN1**

► ISO 4400 ► Electrical connector, form A

Dimensions

1) Max.