

Pneumatic connection technologies → Push-In fittings

Series QR1-S standard

► T-plug connector ► push-in fitting ► Ø 4 - Ø16 ► push-in fitting ► Ø 4 - Ø16 ► QR1-S-RTK



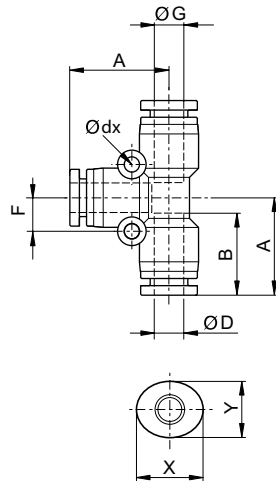
Ambient temperature min./max. +0°C / +60°C
 Working pressure min./max. -0.95 bar / 10 bar

Materials:
 Screw nickel-plated
 Housing Polybutyleneterephthalate
 Seal Acrylonitrile Butadiene Rubber
 Tooth lock washer Stainless steel
 Release ring Polyoxymethylene
 Release ring holder Die cast zinc; Brass, nickel-plated

Technical Remarks

- The series QR1 (plastic) and QR2 (metal) can not be combined
- For further information about assembling and tolerances of adaptable tubing, see the section "Technical information".

Dimensions



Part No.	Port G	Port D	Ø dx	A	B	F	X	Y	Delivery quantity [Piece]	Weight [kg]
2121104000	Ø 4	Ø 4	2.2	18.5	16	6	12	10	10	0.007
2121106000	Ø 6	Ø 6	3.2	20.4	17	8	14	12	10	0.0094
2121108000	Ø 8	Ø 8	3.2	22.8	18.5	9	16	14	10	0.0126
2121110000	Ø 10	Ø 10	4.2	26.1	21	12	19	17	10	0.0221
2121112000	Ø 12	Ø 12	4.2	29	22.5	14	23	21	10	0.0307
2121114000	Ø 14	Ø 14	-	32.1	24.6	13.5	25	23	5	0.0409
R412005025	Ø16	Ø16	5.3	31.1	22.6	16.6	27	24	5	0.0523