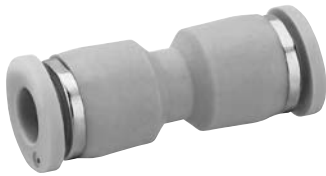


Pneumatic connection technologies → Push-In fittings

Series QR1-S standard

► Straight plug connector ► push-in fitting ► Ø 4 - Ø16 ► push-in fitting ► Ø 4 - Ø16 ► QR1-S-RSK



00117312

Ambient temperature min./max.
Working pressure min./max.

+0°C / +60°C
-0.95 bar / 10 bar

Materials:

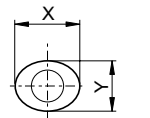
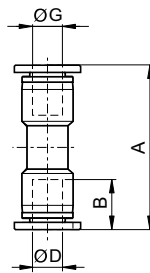
Screw
Housing
Seal
Tooth lock washer
Release ring
Release ring holder

nickel-plated
Polybutyleneterephthalate
Acrylonitrile Butadiene Rubber
Stainless steel
Polyoxymethylene
Die cast zinc; Brass, nickel-plated

Technical Remarks

- The series QR1 (plastic) and QR2 (metal) can not be combined
- For further information about assembling and tolerances of adaptable tubing, see the section "Technical information".

Dimensions



00117247

Part No.	Port G	Port D	A	B	X	Y	Delivery quantity [Piece]	Weight [kg]				
2121504000	Ø 4	Ø 4	33.4	16	12	10	10	0.0045				
2121506000	Ø 6	Ø 6	35.4	17	14	12	10	0.0056				
2121508000	Ø 8	Ø 8	39	18.5	16	14	10	0.0077				
2121510000	Ø 10	Ø 10	43	21	19	17	10	0.0134				
2121512000	Ø 12	Ø 12	47	22.5	23	21	10	0.0188				
2121514000	Ø 14	Ø 14	51.2	24.6	25	23	5	0.0247				
R412005059	Ø16	Ø16	62.2	24.8	27	24	5	0.0353				