

Compressed Air Preparation

Pressure regulator, M22x1.5

Rexroth
Bosch Group

Technical data

Type	Diaphragm pressure regulator with secondary ventilation	
Ambient temperature range	-25° to +70°C	
Admissible medium	Compressed air	
Pressure range	Input pressure	Max. 40 bar
	Outlet pressure	See table
Flow (at input pressure 30 bar and $\Delta p = 1$ bar)	2000 NI/min	
Weight		
Materials	Housing	Aluminium

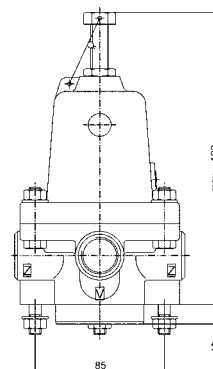
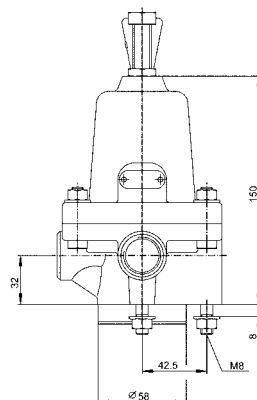
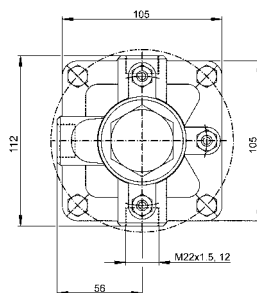


Type number

Symbol	Input pressure [bar]	Outlet pressure [bar]	Connecting thread	Type number
	4-40	1 - 8	M 22 x 1.5	375 003 100 0
	40	1 - 15	M 22 x 1.5	375 003 200 0

Accessories (to be ordered separately)

Accessories	Designation	Type number
	Repair kit for 375 003 100 0	375 003 000 2
	Repair kit for 375 003 200 0	375 003 001 2



Assembly position is open.