

Pneumatic connection technologies → Push-In fittings

Series QR1-S standard

► Sealing cap ► push-in fitting ► Ø 4 - Ø 12 ► QR1-S-RCA



00117351

Ambient temperature min./max.

+0°C / +60°C

Working pressure min./max.

-0.95 bar / 10 bar

Materials:

Screw

nickel-plated

Housing

Polybutyleneterephthalate

Seal

Acrylonitrile Butadiene Rubber

Tooth lock washer

Stainless steel

Release ring

Polyoxymethylene

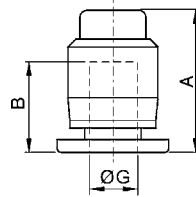
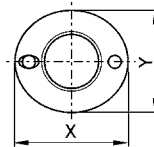
Release ring holder

Die cast zinc; Brass, nickel-plated

Technical Remarks

- The series QR1 (plastic) and QR2 (metal) can not be combined
- For further information about assembling and tolerances of adaptable tubing, see the section "Technical information".

Dimensions



00117408

Part No.	Port G	A	B	X	Y	Delivery quantity [Piece]	Weight [kg]				
R412005111	Ø 4	17.7	16	12	10	20	0.0022				
R412005112	Ø 6	18.7	17	14	12	20	0.003				
R412005113	Ø 8	20.5	18.5	16	14	20	0.0041				
R412005114	Ø 10	23.5	21	19	17	20	0.0072				
R412005115	Ø 12	25.5	22.5	23	21	20	0.0098				