

Preparation of compressed air → Maintenance units and components

Pressure regulator, Series AS1-RGS-...-DS

► G 1/4 ► Air supply: left ► Qn=1000 l/min ► Activation: manual ► with continuous pressure supply ► with pressure gauge in hand wheel



00137238

Mounting orientation	Any
Working pressure min./max.	See table below
Medium	Compressed air
Medium temperature min./max.	-10 °C / +50 °C
Ambient temperature min./max.	-10 °C / +50 °C
Regulator type	Diaphragm-type pressure regulator, Can be assembled into blocks with relieving air exhaust
Regulator function	See table below
Adjustment range min./max.	
Materials:	
Housing	Polyamide
Front plate	Acrylonitrile butadiene styrene
Seals	Acrylonitrile Butadiene Rubber

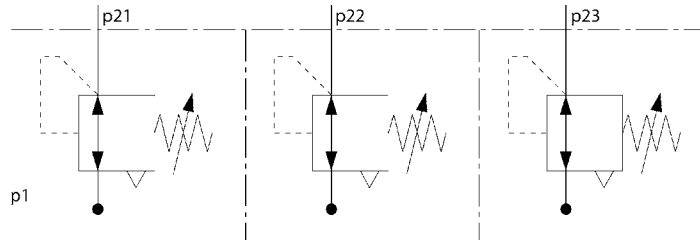
Technical Remarks

- The pressure dew point must be at least 15 °C under ambient and medium temperature and may not exceed 3 °C.

		Port	Qn	Working pressure	Adjustment range	Weight	Part No.
				min./max.	min. - max..		
			[l/min]	[bar]	[bar]	[kg]	
		G 1/4	1000	0.2 / 12	0.2 - 4	0.239	R412014642
				0.5 / 12	0.5 - 8		R412014643
				0.5 / 12	0.5 - 10		R412014644

Nominal flow Qn at p1 = 6.3 bar and Δp = 1 bar
 Panel nut included in scope of delivery

Application example



00108090

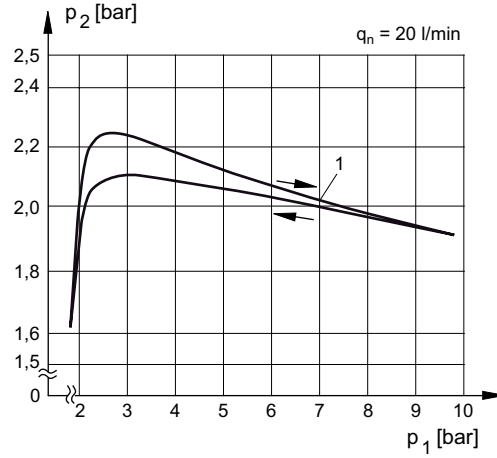
p1 = working pressure
 p21; p22; p23 = secondary pressure

Preparation of compressed air → Maintenance units and components

Pressure regulator, Series AS1-RGS...-DS

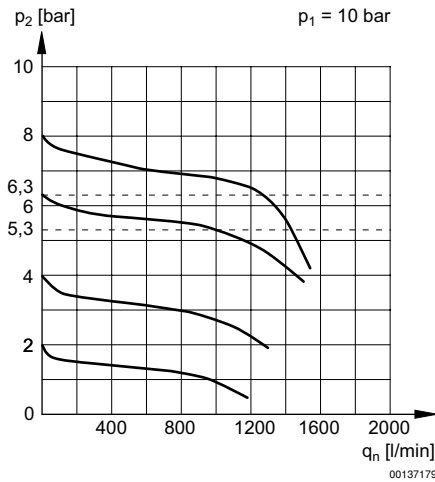
► G 1/4 ► Air supply: left ► $Q_n=1000$ l/min ► Activation: manual ► with continuous pressure supply ► with pressure gauge in hand wheel

Pressure characteristics curve



p_1 = Working pressure
 p_2 = Secondary pressure
 q_n = Nominal flow
 1 = Starting point

Flow rate characteristic



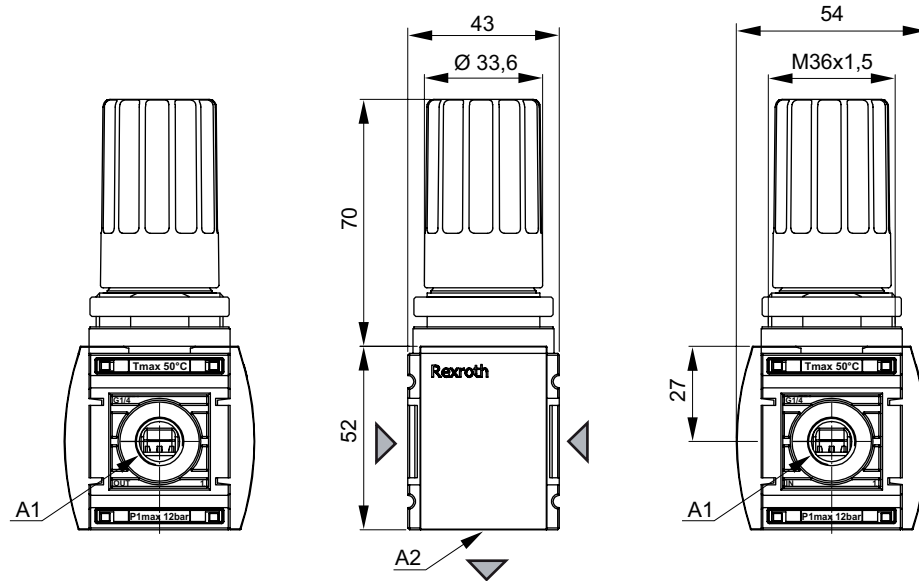
p_1 = Working pressure
 p_2 = Secondary pressure
 q_n = Nominal flow

Preparation of compressed air → Maintenance units and components

Pressure regulator, Series AS1-RGS-...-DS

► G 1/4 ► Air supply: left ► Qn=1000 l/min ► Activation: manual ► with continuous pressure supply ► with pressure gauge in hand wheel

Dimensions



00137949

A1 = input

A2 = output

Panel nut included in scope of delivery