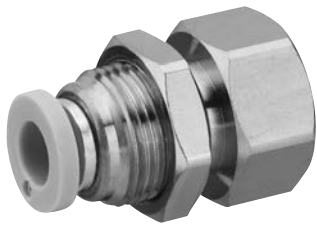


Pneumatic connection technologies → Supplementary products

Series QR1-S standard

► Bulkhead connector ► internal thread ► 3/8 NPTF - 1/4 NPTF ► push-in fitting ► Ø1/2 - Ø1/4 ► QR1-S-RSI



00117330

Ambient temperature min./max.
Working pressure min./max.

+0 °C / +60 °C
-0.95 bar / 10 bar

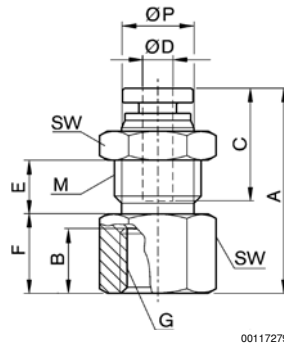
Materials:

Screw	nickel-plated
Housing	Brass, nickel-plated
Seal	Acrylonitrile Butadiene Rubber
Tooth lock washer	Stainless steel
Release ring	Polyoxymethylene
Release ring holder	Die cast zinc; Brass, nickel-plated
Thread	Brass, nickel-plated

Technical Remarks

- The series QR1 (plastic) and QR2 (metal) can not be combined
- These pneumatic components with NPTF or inch thread dimensions are only available from our US sales organization
- For further information about assembling and tolerances of adaptable tubing, see the section "Technical information".

Dimensions in inches



00117279

Dimensions in inches

Part No.	Port G	Port D	M	A	B	C	E	F	SW	Ø P	Delivery quantity [Piece]
R432000142	3/8 NPTF	Ø1/2	7/8 UNF	1.52	0.51	0.89	0.34	0.59	1	0.8	10
R432000146	3/8 NPTF	Ø3/8	7/8 UNF	1.44	0.51	0.83	0.23	0.59	1	0.67	10
R432000149	3/8 NPTF	Ø5/16	5/8 UNF	1.45	0.51	0.73	0.33	0.59	3/4	0.55	10
R432000144	1/8 NPTF	Ø1/4	9/16 UNF	1.08	0.36	0.67	0.25	0.35	11/16	0.47	10
R432000143	1/4 NPTF	Ø1/4	9/16 UNF	1.26	0.47	0.67	0.25	0.53	11/16	0.47	10
R432000145	1/4 NPTF	Ø3/8	7/8 UNF	1.4	0.47	0.83	0.23	0.55	1	0.67	10
R432000147	1/4 NPTF	Ø3/8	5/8 UNF	1.41	0.47	0.73	0.33	0.55	3/4	0.55	10

Part No.	Port G	Weight [kg]									
R432000142	3/8 NPTF	0.08									
R432000146	3/8 NPTF	0.07									
R432000149	3/8 NPTF	0.03									
R432000144	1/8 NPTF	0.027									
R432000143	1/4 NPTF	0.032									
R432000145	1/4 NPTF	0.059									
R432000147	1/4 NPTF	0.041									

Supplementary products

Part numbers marked in bold are available from the central warehouse in Germany, see the shopping basket for more detailed information Pneumatics catalog, online PDF, as of 2013-04-11, © Bosch Rexroth AG, subject to change