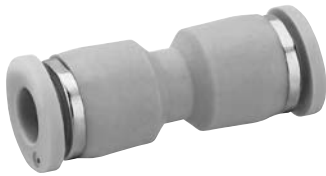


Pneumatic connection technologies → Supplementary products

Series QR1-S standard

► Straight plug connector ► push-in fitting ► Ø5/32 - Ø1/2 ► push-in fitting ► Ø5/32 - Ø1/2 ► QR1-S-RSK



00117312

Ambient temperature min./max.
Working pressure min./max.

+0°C / +60°C
-0.95 bar / 10 bar

Materials:

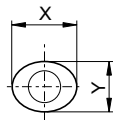
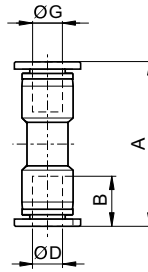
Screw
Housing
Seal
Tooth lock washer
Release ring
Release ring holder

nickel-plated
Polybutyleneterephthalate
Acrylonitrile Butadiene Rubber
Stainless steel
Polyoxymethylene
Die cast zinc; Brass, nickel-plated

Technical Remarks

- The series QR1 (plastic) and QR2 (metal) can not be combined
- These pneumatic components with NPTF or inch thread dimensions are only available from our US sales organization
- For further information about assembling and tolerances of adaptable tubing, see the section "Technical information".

Dimensions in inches



00117247

Dimensions in inches

Part No.	Port G	Port D	A	B	X	Y	Delivery quantity [Piece]	Weight [kg]				
R432000154	Ø5/32	Ø5/32	1.27	0.63	0.47	0.4	10	0.005				
R432000153	Ø5/16	Ø5/16	1.54	0.73	0.63	0.55	10	0.009				
R432000152	Ø3/8	Ø3/8	1.67	0.83	0.75	0.67	10	0.014				
R432000151	Ø1/4	Ø1/4	1.4	0.67	0.552	0.47	10	0.005				
R432000150	Ø1/2	Ø1/2	1.85	0.89	0.91	0.83	10	0.018				

Supplementary products

Part numbers marked in bold are available from the central warehouse in Germany, see the shopping basket for more detailed information Pneumatics catalog, online PDF, as of 2013-04-11, © Bosch Rexroth AG, subject to change