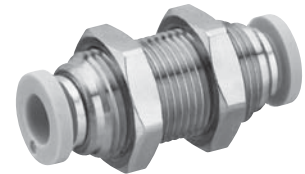
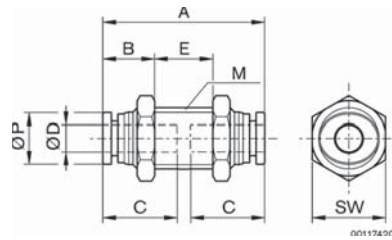


Plastic fittings, series QR1-Inch Standard

10-32 UNF – 1/2" NPTF, straight fitting for Ø 5/32" to 1/2" tube

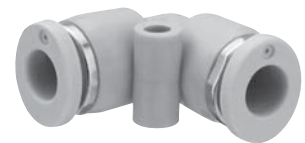
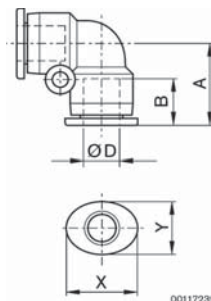
▲ ● Bulkhead union, metal, series QR1-RSM



Ø D	M	A	B	C	E	SW	Ø P	Weight [lbs]	Per Pack	Part no.
5/32	UNF 1/2	1.269	0.741	0.630	0.339	9/16	0.394	0.04	10	R432000159
3/16	UNF 9/16	1.390	0.480	0.669	0.429	11/16	0.406	0.06	10	R432030411
1/4	UNF 9/16	1.407	0.508	0.669	0.390	11/16	0.473	0.06	10	R432000156
5/16	UNF 5/8	1.509	0.571	0.729	0.366	3/4	0.552	0.07	10	R432000158
3/8	UNF 7/8	1.706	0.646	0.827	0.414	1	0.669	0.17	10	R432000157
1/2	UNF 7/8	1.891	0.615	0.887	0.662	1	0.796	0.16	10	R432000155

Dimensions in inches

▲ ★ Elbow union, series QR1-RVK



Ø D	A	B	X	Y	Weight [lbs]	per Pack	Part no.
5/32	0.713	0.63	0.473	0.394	0.01	10	R432000211
1/4	0.812	0.67	0.552	0.473	0.01	10	R432000208
5/16	0.898	0.729	0.63	0.552	0.02	10	R432000210
3/8	1.028	0.827	0.749	0.67	0.03	10	R432000209
1/2	1.143	0.887	0.906	0.827	0.04	10	R432000207

Dimensions in inches