

Pneumatic connection technologies → Supplementary products

Series QR1-S standard

► T-plug connector ► push-in fitting ► Ø5/32 - Ø1/2 ► push-in fitting ► Ø5/32 - Ø1/2 ► QR1-S-RTK



Ambient temperature min./max.
Working pressure min./max.

+0°C / +60°C
-0.95 bar / 10 bar

Materials:

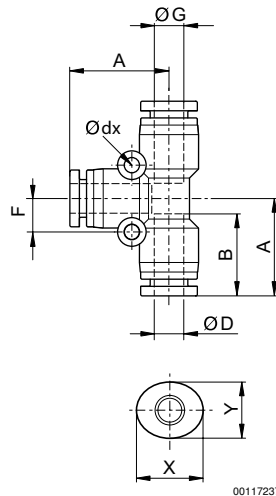
Screw
Housing
Seal
Tooth lock washer
Release ring
Release ring holder

nickel-plated
Polybutyleneterephthalate
Acrylonitrile Butadiene Rubber
Stainless steel
Polyoxymethylene
Die cast zinc; Brass, nickel-plated

Technical Remarks

- The series QR1 (plastic) and QR2 (metal) can not be combined
- These pneumatic components with NPTF or inch thread dimensions are only available from our US sales organization
- For further information about assembling and tolerances of adaptable tubing, see the section "Technical information".

Dimensions in inches



Dimensions in inches

| Part No. | Port G | Port D | A | B | X | Y | Delivery quantity [Piece] | Weight [kg] | | | | |
|------------|--------|--------|------|------|------|------|---------------------------|-------------|--|--|--|--|
| R432000170 | Ø5/32 | Ø5/32 | 0.71 | 0.63 | 0.47 | 0.39 | 10 | 0.009 | | | | |
| R432000169 | Ø5/16 | Ø5/16 | 0.89 | 0.73 | 0.63 | 0.55 | 10 | 0.014 | | | | |
| R432000168 | Ø3/8 | Ø3/8 | 1.03 | 0.83 | 0.75 | 0.67 | 10 | 0.023 | | | | |
| R432000166 | Ø1/2 | Ø1/2 | 1.15 | 0.89 | 0.91 | 0.83 | 10 | 0.032 | | | | |

Supplementary products

Part numbers marked in bold are available from the central warehouse in Germany, see the shopping basket for more detailed information Pneumatics catalog, online PDF, as of 2013-04-11, © Bosch Rexroth AG, subject to change