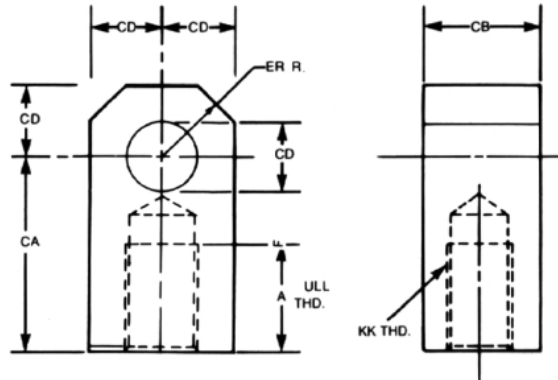


# Taskmaster® Pneumatic Cylinder

Accessories - 1.5" thru 4" bore

**Rexroth**  
Bosch Group

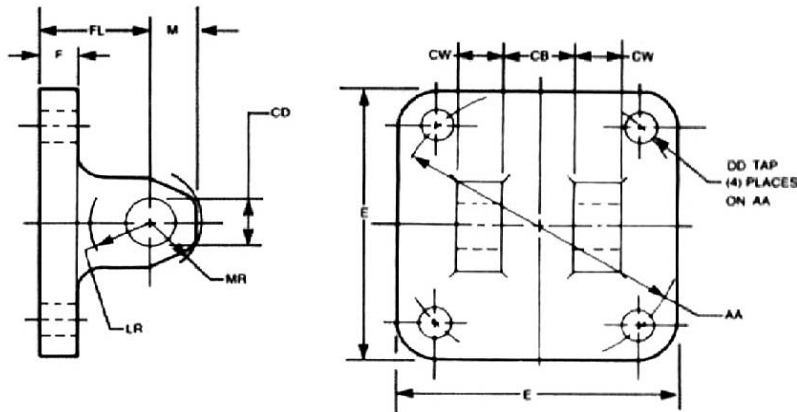
## Female Rod Eye (Steel)



PART NO.	BORE	THREAD KK	A	CA	CB	CD	ER	WEIGHT
R432006533	1.5, 2 & 2.5	1/2-20	0.88	1.50	0.75	0.50	0.56	0 lb. 5 oz.
R432013437	3.25 & 4	7/8-14	1.13	2.06	1.25	0.75	0.84	1 lb. 0 oz.

For sizes not shown, see NFPA cylinder accessories.

## Clevis Bracket (Aluminum)



PART NO.	WEIGHT	BORE	E	F	M	AA	CB	CD	CW	DD	FL	LR	MR
R432013366	0 lb. 4 oz.	1.50	2.00	0.38	0.50	2.02	0.75	0.50	0.50	0.25	1.13	0.63	0.53
R432012511	0 lb. 4 oz.	2.00	2.50	0.38	0.50	2.60	0.75	0.50	0.50	0.31	1.13	0.63	0.53
R432013381	0 lb. 8 oz.	2.50	3.00	0.38	0.50	3.10	0.75	0.50	0.50	0.31	1.13	0.63	0.53
R432008891	1 lb. 2 oz.	3.25	3.75	0.63	0.75	3.90	1.25	0.75	0.63	0.38	1.88	0.88	0.78
R432008893	1 lb. 8 oz.	4.00	4.50	0.63	0.75	4.70	1.25	0.75	0.63	0.38	1.88	0.88	0.78

Clevis bracket mates with female rod eye or MP4 mount. For sizes not shown see NFPA cylinder accessories.