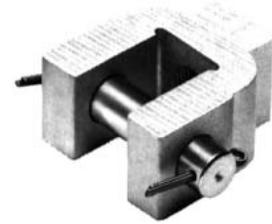
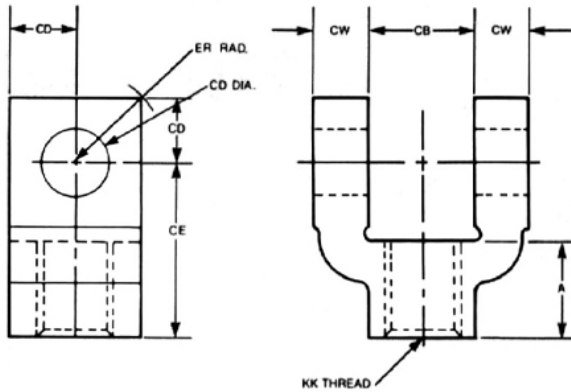


# Taskmaster® Pneumatic Cylinder

Accessories - 1.5" thru 4" bore

**Rexroth**  
Bosch Group

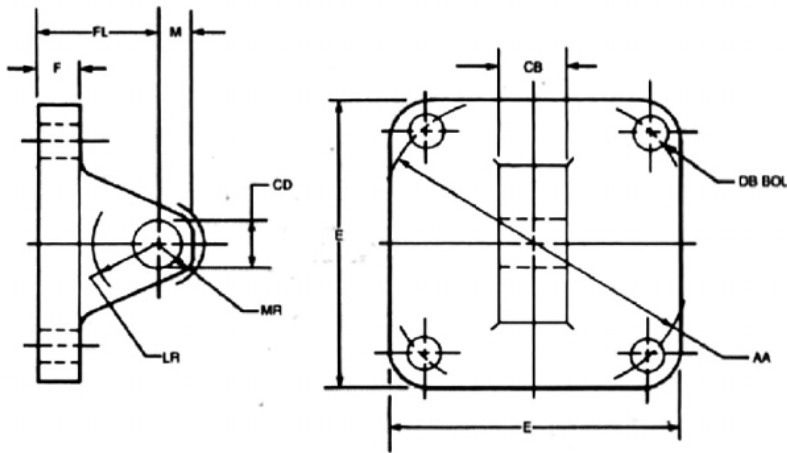
## Female Rod Clevis (Aluminum)



PART NO.	BORE	ROD	THREAD KK	A	CB	CD	CE	CW	ER	WEIGHT
R432012516	1.5, 2 & 2.5	0.625	1/2-20	0.75	0.75	0.50	1.50	0.50	0.72	0 lb. 9 oz.
R432013386	3.25 & 4	1.000	7/8-14	1.13	1.25	0.75	2.06	0.63	1.06	1 lb. 0 oz.

Includes pivot pin and retaining rings. For sizes not shown, see NFPA cylinder accessories.

## Eye Bracket (Aluminum)



PART NO.	WEIGHT	BORE	E	F	M	AA	CB	CD	DB	FL	LR	MR
R432013368	0 lb. 4 oz.	1.50	2.00	0.38	0.50	2.02	0.75	0.50	0.25	1.13	0.63	0.53
R432012551	0 lb. 4 oz.	2.00	2.50	0.38	0.50	2.60	0.75	0.50	0.31	1.13	0.63	0.53
R432013376	0 lb. 8 oz.	2.50	3.00	0.38	0.50	3.10	0.75	0.50	0.31	1.13	0.63	0.53
R432008890	1 lb. 4 oz.	3.25	3.75	0.63	0.75	3.90	1.25	0.75	0.38	1.88	0.88	0.78
R432008892	1 lb. 8 oz.	4.00	4.50	0.63	0.75	4.70	1.25	0.75	0.38	1.88	0.88	0.78

Eye bracket mates with female rod clevis or MP1, MP2 mounts.