

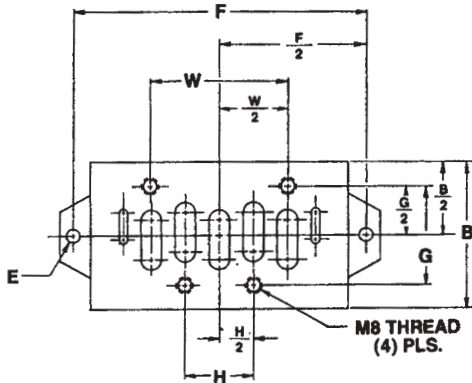
# 2 x 3/2, 5/2 and 5/3 Valves, Series 581 (DIN ISO 5599/1) ISO 1-4

Subbases and manifolds-NPT, ISO size 3

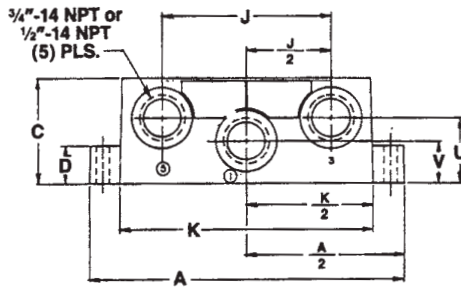


## ISO SIZE III SUBBASES

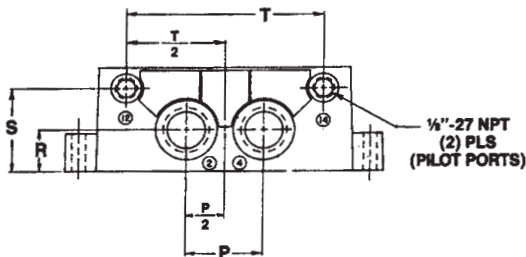
Single Subbase (side ported)  
1/2" or 3/4" NPT ports



SIDE VIEW



SIDE VIEW (FROM OTHER SIDE)

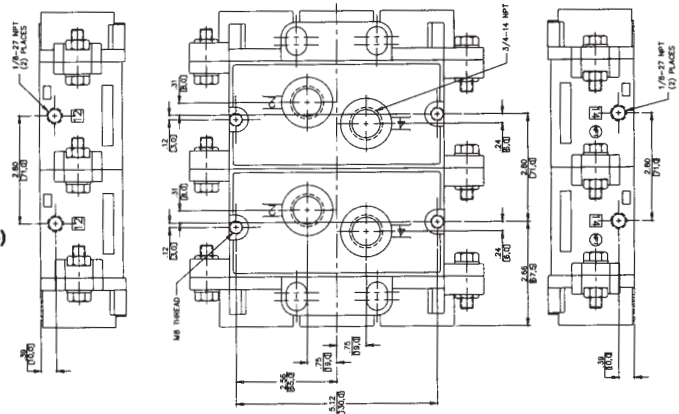
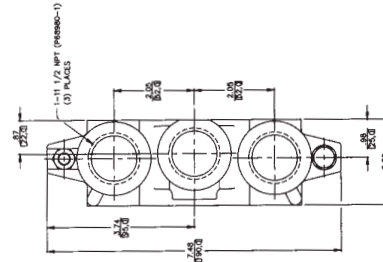
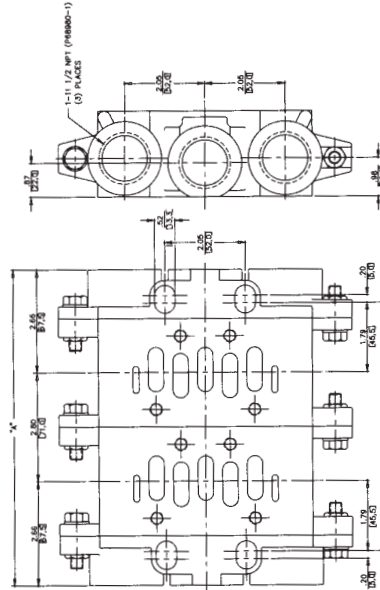


Part No. R432015309 - port Size 3/4" NPT  
R432015308 - port Size 1/2" NPT  
1825503149 - port Size 1/2" BSPP  
R432009166 - port Size 3/4" BSPP

DIM	A	B	C	D	E	F	G	H	J
IN	5.87	2.80	1.97	.71	.26 dia.	5.34	1.89	1.26	3.15
mm	149.0	71.0	50.0	18.0	Ø18.0	136.0	48.0	32.0	80.0

DIM	K	P	R	S	T	U	V	W
IN	4.72	1.42	.79	1.58	3.62	1.22	.79	2.52
mm	120.0	36.0	20.0	40.1	92.0	31.0	20.0	64.0

## ISO SIZE III Bottom Ported Manifolds 1/2" or 3/4" NPT Delivery Ports



Part Number R432015491 - Manifold Station Segment (1/2" NPT)  
(Order Part Number R432015490 for 3/4" Delivery Ports)  
Part Number R432015492 - End Plates (Includes both ends)

DIM	NUMBER OF VALVES															
	2		3		4		5		6		7		8			
A	IN	mm	IN	mm	IN	mm	IN	mm	IN	mm	IN	mm	IN	mm		
B	8.10	205.7	10.90	276.9	13.70	348.0	16.50	419.1	19.30	490.2	22.10	561.3	24.90	632.5		
B	6.38	162.1	9.18	233.2	11.98	304.3	14.78	375.4	17.58	446.5	20.38	517.7	23.18	588.8		