

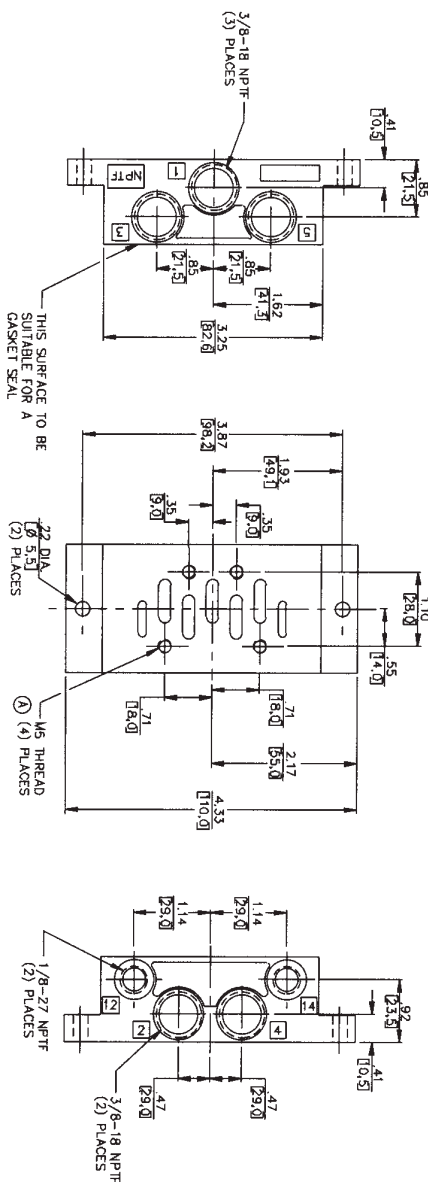
2 x 3/2, 5/2 and 5/3 Valves, Series 581 (DIN ISO 5599/1) ISO 1-4

Subbases and manifolds-NPT, ISO size 1



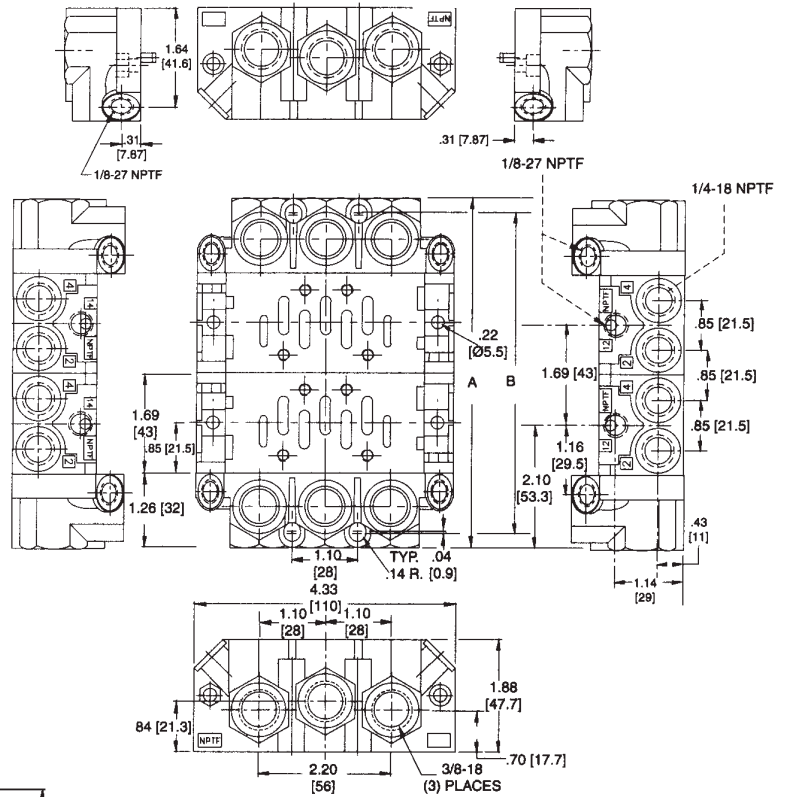
ISO SIZE 1 SUBBASES & MANIFOLDS

Single Subbase (side ported) 1/4" or 3/8" NPT ports



Part No. R432015524 - Port Size 1/4"
R432015488 - Port Size 3/8" (shown)
1825503143 - Port Size 1/8" BSPP

End Ported Manifold 1/4" NPT ports



Part Number R432015314* - Manifold Station Segment**
Part Number R432015316* - End Plates (Includes both ends)**

DIM	NUMBER OF VALVES															
	2		3		4		5		6		7		8			
A	IN	mm	IN	mm	IN	mm	IN	mm	IN	mm	IN	mm	IN	mm	IN	mm
B	5.91	150.0	7.60	193.0	9.29	236.0	10.98	279.0	12.68	322.0	14.37	365.0	16.06	408.0	17.75	451.0

*Manifold gaskets included.
**All hardware is included.

R432012058 Silencer, 3/8" NPT