

2 x 3/2, 5/2 and 5/3 Valves, Series 581 (DIN ISO 5599/1) ISO 1-4

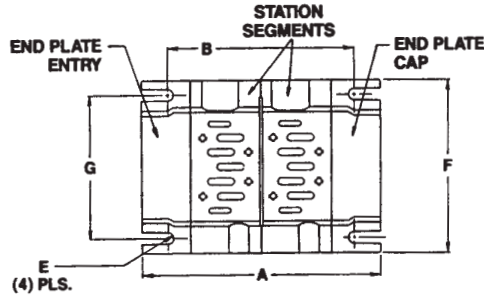
Subbases and manifolds-NPT, ISO size 2



ISO SIZE II SUBBASES & MANIFOLDS

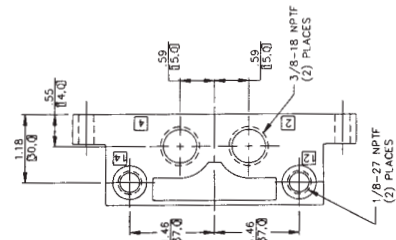
End Ported Manifold

1/2" NPT delivery port

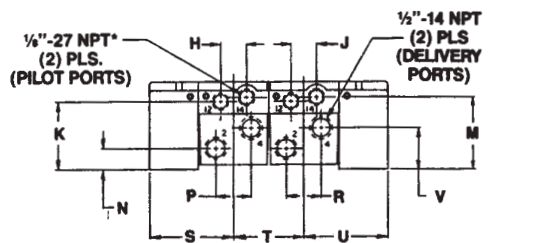


Single Subbase (side ported) 3/8" or 1/2" NPT ports

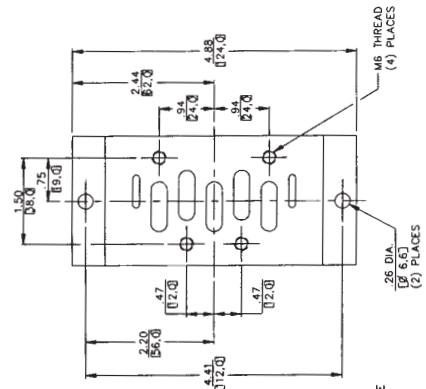
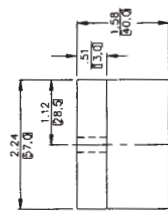
Part No. R432015307 - Port Size 1/2" NPT
R432031845 - Port Size 3/8" NPT (shown)
1825503146 - Port Size 3/8" BSPP



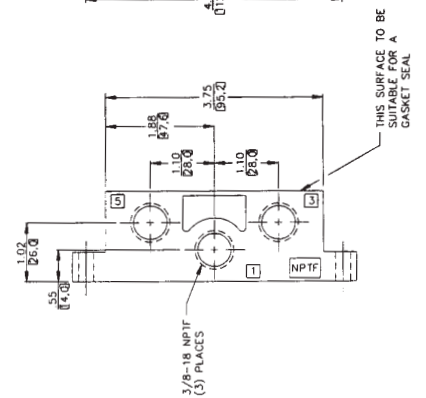
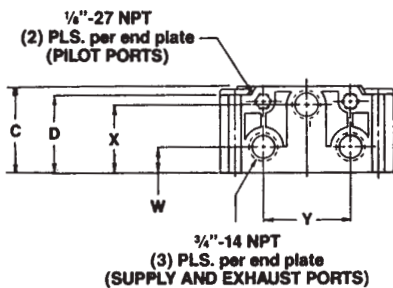
SIDE VIEW



*Note: other side contains port 12 only (1/8"-27 NPT)



END VIEW



Part Number R432015318* - Manifold Station Segment**
Part Number R432015319 - End Plates (Includes both ends)**

DIM	C	D	E	F	G	H	J	K	M	N
IN	3.15	2.82	.17R	4.96	4.09	.79	.79	2.52	2.68	.67
mm	80.0	71.6	R4.3	126.0	104.0	20.0	20.0	64.0	68.0	17.0

DIM	P	R	S	T	U	V	W	X	Y
IN	1.02	1.02	2.68	2.20	2.68	1.42	1.18	2.44	2.44
mm	26.0	26.0	68.0	56.0	68.0	36.0	30.0	62.0	62.0

DIM	NUMBER OF VALVES															
	2		3		4		5		6		7		8			
A	IN	7.56	192.0	9.76	248.0	11.97	304.0	14.17	360.0	16.36	416.0	18.58	472.0	20.79	528.0	
	mm	192.0	248.0	304.0	360.0	416.0	472.0	528.0	584.0	640.0	696.0	752.0	808.0	864.0	920.0	
B	IN	6.01	188.0	8.82	224.0	11.00	279.4	13.23	336.0	15.43	392.0	17.64	448.0	19.84	504.0	
	mm	152.4	224.0	279.4	336.0	392.0	448.0	504.0	560.0	616.0	672.0	728.0	784.0	840.0	896.0	

*Manifold segment plates included.
** All hardware is included.

Silencers:

R432012058 Silencer, 3/8" NPT
R432011952 Silencer, 1/2" NPT
R432012059 Silencer, 3/4" NPT