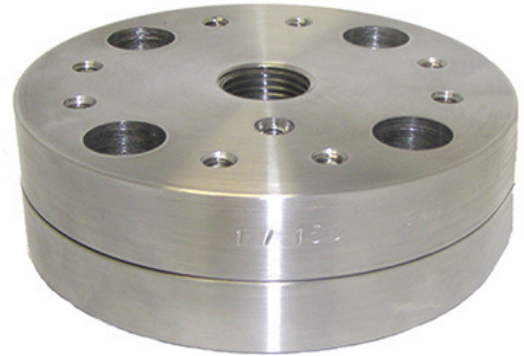


RF (Raised Face) flanged diaphragm seal

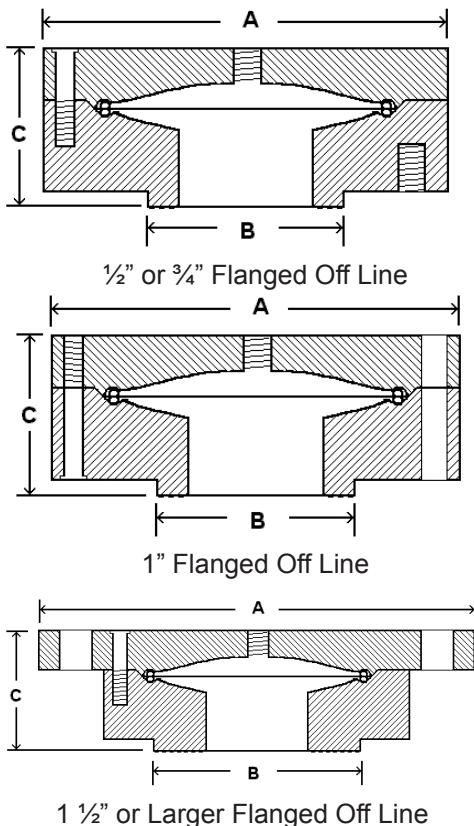
SPECIFICATIONS

Design	Standard: Diaphragm welded to upper housing Also available: Clamped
Instruments	Gauges, pressure switches, transmitters
Appropriate Dial Size	2 1/2" (63 mm) through 6" (152.4 mm)
Pressures	See ASME B16.5 flange ratings
Upper Housing	Chrome plated carbon steel or stainless steel
Wetted Materials	Standard: Carbon, 304 or 316 stainless steel Also available: Hastelloy® C276, Monel®, Tantalum, PTFE (clamped), Carpenter 20®, Titanium, Others upon request
Process Connection	Available sizes see chart below
Instrument Connection	1/4" FNPT, 1/2" FNPT
Bolts	Galvanized steel (CS upper) Stainless steel (SS upper)
Gaskets	Standard on all stainless: Buna N® Also available: Viton®, PTFE, Grafoil®, others upon request
Process Temperature ¹	-4°F to 212°F (-20°C to 100°C)



AVAILABLE OPTIONS*

- Flushing (1/4") connection available on lower housing
- RTJ or other facings available upon request
- 600, 900, 1500# flanged available upon request
- Oxygen cleaned
- Material analysis certificate
- High temperature with Grafoil® gasket



*Lead times/minimums may apply

Process Connection	Flange Rating Class	A	B	C
1/2"	150 #	3 1/2"	1 3/8"	1 3/4"
3/4"		3 3/4"	1 11/16"	1 3/4"
1/2"	300 #	3 3/4"	1 3/8"	1 3/4"
3/4"		4 5/8"	1 11/16"	1 3/4"
1"	150 #	4 1/4"	1 3/8"	1 1/2"
	300 #	4 7/8"	1 9/16"	1 1/2"
600, 900, 1500 # dimensions available upon request.				
1 1/2" or larger	All dimensions according to size and rating of flange.			

Notes:
1. Process Temperature Rating can vary based on materials of construction, system fill fluid, gaskets and pressure gauge selection.