



NVS "SUPER MINI" NEEDLE VALVE

Strong and Durable, Super Compact Size Needle Valve
Pressures up to 6,000 psi

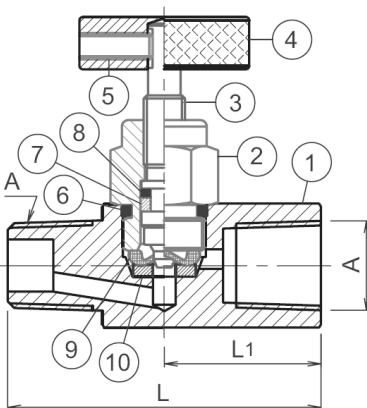
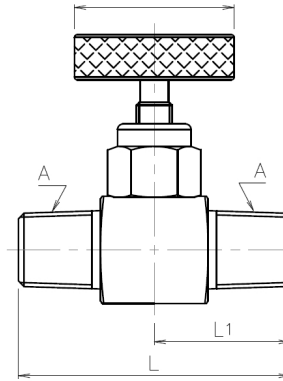
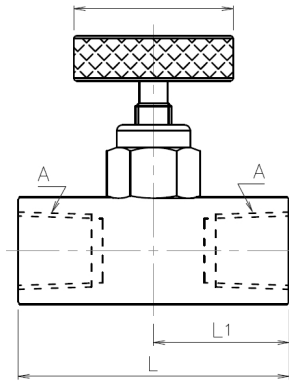
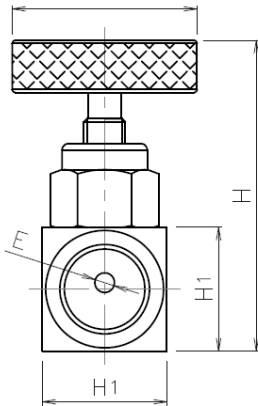
SPECIFICATIONS

Series Number	"NVS"
Material	Carbon steel or 316 stainless steel See chart below for component materials
Pressure Rating	Soft seat - 6000 psi at 200° F
Connection Size	1/4" NPT, male x female, female x female male x male
Handle	Round "thumb wheel"
Seat Material	Soft Seat - POM
Box Quantity	80 pieces
Est. Unit Weight	0.30 lb/0.16 kg



Part Number	Unit	A	L	L1	H	H1	E	Thumb Wheel
NVS-CS-1/4GS-180-MXF NVS-SS-1/4GS-180-MXF	In.	1/4"	1.85"	0.93"	1.97"	0.75"	0.13"	1.02"
	mm	NPT	47	23.5	50	19	3.3	26
NVS-CS-1/4GS-180-FXF NVS-SS-1/4GS-180-FXF	In.	1/4"	1.85"	0.93"	1.97"	0.75"	0.13"	1.02"
	mm	NPT	47	23.5	50	19	3.3	26
NVS-CS-1/4-GS-180-MXM	In.	1/4"	1.85"	0.93"	1.97"	0.75"	0.13"	1.02"
	mm	NPT	47	23.5	50	19	3.3	26

All dimensions shown in the catalog are approximate and subject to change.



Number	Description	316 Valve	Carbon Steel Valve
1	Body	316 SS	C.S.
2	Bonnet	316 SS	C.S.
3	Stem	316 SS	304 SS
4	Handle	303 SS	C.S.
5	Fixing Screw	302 SS	C.S.
6	O-Ring	Viton®	Viton®
7	O-Ring	Viton®	Viton®
8	Back-up Ring	PTFE	PTFE
9	Washer	316 SS	316 SS
10	Soft Seat	POM	POM

AVAILABLE OPTIONS*

- High Temperature
- T-handle
- Hard Seat
- Angle Valve (90°)
- Tube End Connection
- Alternate Connection Sizes

*Lead times/minimums may apply