

Instructions – Parts List



FOR MOISTURE-SENSITIVE MATERIALS

B Component Supply Kits 309192K



Important Safety Instructions

Read all warnings and instructions in this manual.
Save these instructions.

See page 2 for Table of Contents.

Part No. 248224

2-1/2 gallon (9.5 liter) tank

Part No. 248225

5 gallon (18.9 liter) tank

Part No. 248432

Pressure feed kit (for use with 248224 and 248225)

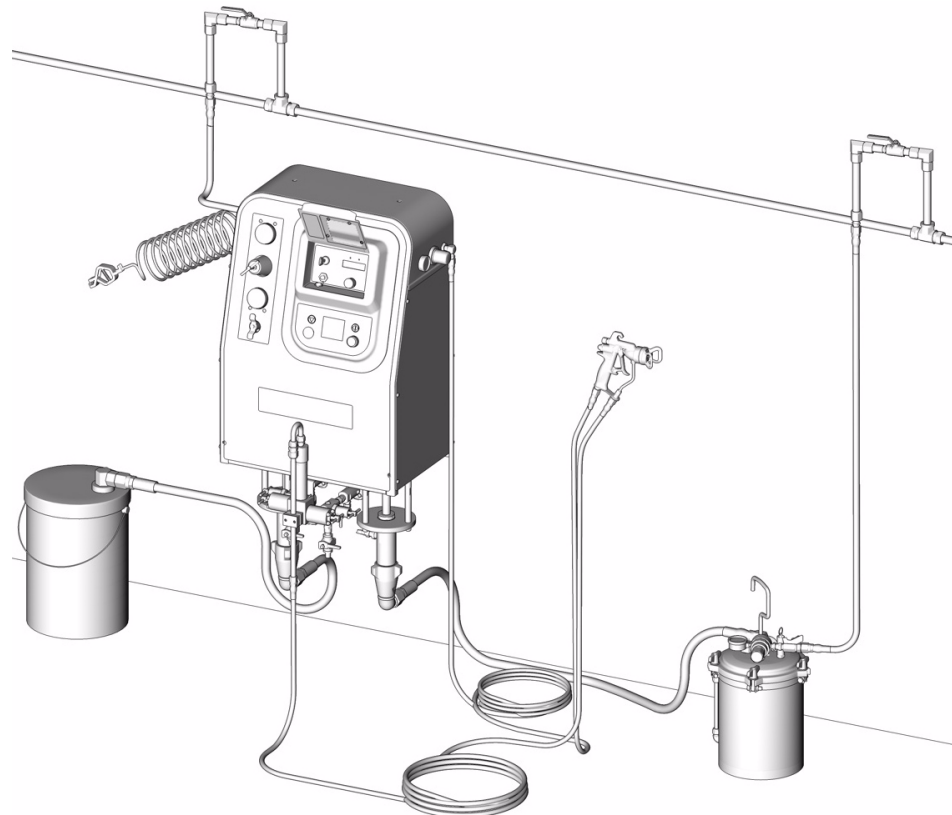


Table of Contents

Warnings	2
Installation	4
Operation	5
Polyurethane Coatings and Isocyanate	6
Parts	7
Warranty	10
Graco Information	10

Symbols

Warning Symbol



This symbol alerts you to the possibility of serious injury or death if you do not follow the instructions.

Caution Symbol



This symbol alerts you to the possibility of damage to or destruction of equipment if you do not follow the corresponding instructions.

! WARNING



INSTRUCTIONS

EQUIPMENT MISUSE HAZARD

Equipment misuse can cause the equipment to rupture or malfunction and result in serious injury.

- This equipment is for professional use only.
- Read all instruction manuals, tags, and labels before operating the equipment.
- Use the equipment only for its intended purpose. If you are uncertain about usage, call your Graco distributor.
- Do not alter or modify this equipment. Use only genuine Graco parts and accessories.
- Check equipment daily. Repair or replace worn or damaged parts immediately.
- Do not use hoses to pull equipment.
- Route hoses away from traffic areas, sharp edges, moving parts, and hot surfaces. Do not expose Graco hoses to temperatures above 82°C (180°F) or below -40°C (-40°F).
- Do not lift pressurized equipment.
- Comply with all applicable local, state, and national fire, electrical, and safety regulations.
- Never use 1.1.1-trichloroethane, methylene chloride, other halogenated hydrocarbon solvents or fluids containing such solvents in pressurized aluminum equipment. Such use could result in a chemical reaction, with the possibility of explosion.

WARNING



PRESSURIZED EQUIPMENT HAZARD

Spray from the gun, hose leaks, or ruptured components can splash fluid in the eyes or on the skin and cause serious injury.

- Do not stop or deflect fluid leaks with your hand, body, glove, or rag.
- Follow the **Pressure Relief Procedure** on page 5 whenever you: are instructed to relieve the pressure; stop spraying; clean, check, or service the equipment; and install or clean the fluid nozzle.
- Tighten all the fluid connections before operating the equipment.
- Check the hoses, tubes, and couplings daily. Replace worn, damaged, or loose parts immediately. Permanently coupled hoses cannot be repaired; replace the entire hose.



FIRE AND EXPLOSION HAZARD

Improper grounding, poor ventilation, open flames or sparks can cause a hazardous condition and result in a fire or explosion and serious injury.

- Ground the equipment and the object being sprayed. Refer to **Grounding** on page 4.
- If there is any static sparking or you feel an electric shock while using this equipment, **stop spraying immediately**. Do not use the equipment until you identify and correct the problem.
- Provide fresh air ventilation to avoid the buildup of flammable fumes from solvents or the fluid being sprayed.
- Keep the spray area free of debris, including solvent, rags, and gasoline.
- Electrically disconnect all equipment in the spray area.
- Extinguish all open flames or pilot lights in the spray area.
- Do not smoke in the spray area.
- Do not turn on or off any light switch in the spray area while operating or if fumes are present.
- Do not operate a gasoline engine in the spray area.



TOXIC FLUID HAZARD

Hazardous fluid or toxic fumes can cause serious injury or death if splashed in the eyes or on the skin, inhaled, or swallowed.

- Know the specific hazards of the fluid you are using.
- Store hazardous fluid in an approved container. Dispose of hazardous fluid according to all local, state and national guidelines.
- Always wear protective eyewear, gloves, clothing and respirator as recommended by the fluid and solvent manufacturer.

Installation

Grounding

⚠ WARNING

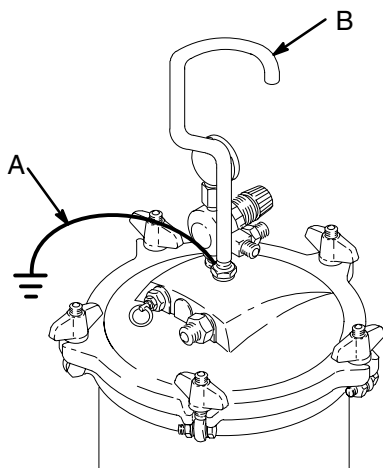


FIRE AND EXPLOSION HAZARD

Before operating the pump, ground the system as explained below. Also read the section **FIRE AND EXPLOSION HAZARD** on page 3.



1. *Pump:* connect the ground wire (A) firmly to a metal part of the tank such as the base of the carry handle (B). Connect the other end of the wire to a true earth ground. See Fig. 1. Order Part No. 237569 Ground Wire and Clamp.
2. *Air compressor:* according to the manufacturer's recommendations.
3. *Object being sprayed:* according to local code.
4. *All solvent pails used when flushing,* according to local code. Use only metal pails, which are conductive. Do not place the pail on a non-conductive surface, such as paper or cardboard, which interrupts the grounding continuity.
5. *To maintain grounding continuity when flushing or relieving pressure,* always hold a metal part of the gun firmly to the side of a grounded metal pail, then trigger the gun.



7856

Fig. 1

⚠ CAUTION

Do not pressure feed tanks or proportioners that are not specifically designed for it. Even low pressure feeding of the pumps can burst tanks or cause off-ratio spraying.

⚠ WARNING

To reduce the risk of serious injury whenever you are instructed to relieve pressure, always follow the **Pressure Relief Procedure** in the proportioner manual and the **Pressure Relief Procedure** on page 5.

1. Relieve the pressure.
2. Remove the suction tube from the inlet of the component B pump.

NOTE: Use thread sealant on all male threads.

3. Connect the tank to the pump inlet using the tubing and fitting provided by the installer for 248224 and 248225. Refer to the parts drawing for your kit.
4. Fill the tank with component B material.
5. Remove the caps on either end of the desiccant dryer tube (2). Insert the threaded end of the tube into the port labeled "AIR" on top of the lid. Tighten securely.

NOTE: As the material in the desiccant tube becomes saturated its color changes from blue to pink.

6. Ensure that all connections are tight and that tank cover is secured.
7. The proportioner is now ready for operation with moisture-sensitive materials.
8. When pressure feeding, replace the desiccant dryer tube with the pressure feed kit.

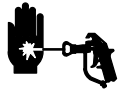
All pressurized tanks

Install an air filter upstream from the regulator to remove dirt and moisture from your air supply.

Operation

Pressure Relief Procedure

WARNING



SKIN INJECTION HAZARD

Fluid under high pressure can be injected through the skin and cause serious injury. To reduce the risk of an injury from injection, splashing fluid, or moving parts, follow the **Pressure Relief Procedure** whenever you:

- are instructed to relieve the pressure,
- stop spraying,
- check or service any of the system equipment,
- or install or clean the spray tip.

1. Shut off the air supply to the tank.
2. Open the safety relief valve (12) by lifting its ring.
3. Wait until there is not air escaping through the valve before unscrewing the wing nuts to remove the tank cover.

Prepare the paint or other coating

Follow the manufacturer's recommendations. Strain the paint to remove particles or sediment that could clog the spray gun and hose.

To fill the tank

Follow the **Pressure Relief Procedure Warning**, above. Loosen the wing nuts and remove the cover (H). Fill the tank with the paint, leaving at least 2 in. (51 mm) between the paint level and the tank cover.

CAUTION

Overfilling or tipping the tank causes the liquid to enter the air line and clog the regulator and hose. Do not exceed the tank capacity.

Install the tank cover

Replace the cover and evenly hand tighten the wing nuts. Overtightening the nuts may cause the gasket (1c) to squeeze out. The gasket is needed to properly seal the cover and tank.

Adjusting the air regulators

WARNING

To reduce the risk of overpressurizing the tank, which could result in component rupture and cause serious injury:

Never exceed 50 psi (350 kPa, 3.5 bar) **MAXIMUM AIR INPUT PRESSURE** to the tank.

Turn the air regulator knob(s) counterclockwise all the way to off. Turn on the master air supply. Adjust the air regulator to the required pressure. Always use the lowest pressure necessary to obtain the desired results.

Keep the safety relief valve (1b) clean and in working order. The relief valve is preset and locked and will release air pressure automatically if it exceeds 50 psi (3.5 bar).

WARNING

Check the release pressure of the safety relief valve (1b) weekly. If this setting has changed or if paint comes in contact with the valve, remove and clean the valve thoroughly. If the valve still doesn't work properly, replace it with a new one.

DO NOT TRY TO RESET THE VALVE.

Polyurethane Coatings and Isocyanate

Isocyanate and Fluid Handling Equipment

Isocyanate is a catalyst that is often used in two component polyurethanes. It is sensitive to moisture, such as humidity in the air. Moisture will react with the isocyanate, which causes small, hard, and very abrasive crystals to form and become suspended in the material. Eventually a film will develop over the top of the isocyanate, and the isocyanate will begin to “gel” (increase in viscosity). If used, this partially cured isocyanate will dramatically hinder the performance and life of all wetted parts.

NOTE: The amount of film formation and rate of material crystallization will vary depending on the blend of isocyanate.

Some ways in which moisture can come into contact with isocyanate would be:

- **A dry wet-cup.** As a piston pump cycles it will draw a thin film of material up past the throat seal into the atmosphere. Always keep the wet-cup filled with Graco ISO Pump Oil (IPO). The ISO oil will create a barrier between the isocyanate and the atmosphere.
- **Moisture sensitive hoses.** The “ISO Hose” must always be constructed from Polyethylene (PE) PTFE or Polyolefin (Moisture Lok™). These hoses are less prone to absorb moisture.
- **Solvents exposed to atmosphere or reclaimed solvents.** These solvents can contain moisture. Although the reaction time will typically be at a slower rate, it is recommended that solvent containers are kept closed when not in use and that reclaimed solvents are never used when working with isocyanates.

Contact your Graco distributor for details on what product is recommended when spraying polyurethanes.

Parts

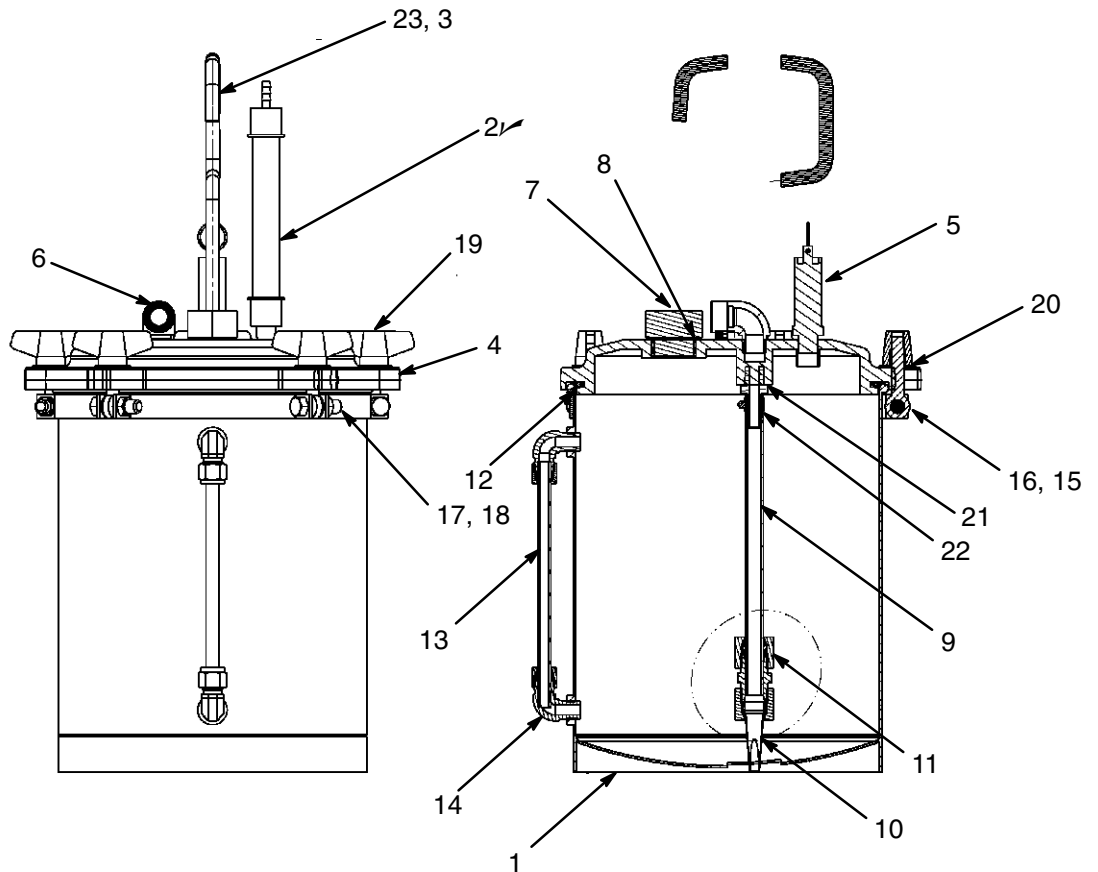
Use Only Genuine Graco Parts and Accessories

Part No. 248224 2-1/2 gallon (9.5 liter) Aluminum Tank Kit

Part No. 248225 5 gallon (18.9 liter) Aluminum Tank Kit

Ref No.	Part No.	Description	Qty	Ref No.	Part No.	Description	Qty
1	15D871	TANK, steel; 2-1/2 gal. (9.5 liter) (248224)	1	13	597350	TUBE, PTFE, bulk 6-1/3 in. (16.08 cm) for 248224;	
1	15D888	TANK, steel; 5 gal. (18.9 liter) (248225)	1			20 in. (50.8 cm) for 248225)	
2✓	198421	TUBE, dryer, desiccant (4 pack of 15B308)	1	14	510223	FITTING, elbow, male	2
3	100340	NUT	1	15	M70680	BOLT, eye	5
4		COVER, tank, aluminum	1	16	M70684	SEGMENT, band	5
5	110065	VALVE, safety	1	17	M70681	SCREW, cap, hex hd	5
6	110756	ELBOW, street, 90°	1	18	M70682	NUT, band	5
7	15D941	PLUG, tank cover	1	19	M70678	NUT, wing	5
8	166080	PACKING, o-ring	1	20	M70677	WASHER, steel	5
9	054139	TUBE, nylon, round; 7-1/4 in. (18.42 cm) for 248224; 21 in. (53.34 cm) for 248225		21	116288	FITTING, thread to barb adapter	1
10	185416	STRAINER	1	22	801971	CLAMP, hose, miniature	1
11	116109	CONNECTOR, union, 1/2 in. tube	1	23	M71639	HANDLE, paint tank	1
12	244953	GASKET KIT, polyethylene (pkg of 3)	1				

✓ Keep these spare parts on hand to reduce down time. See page 8 for spare part kit options.

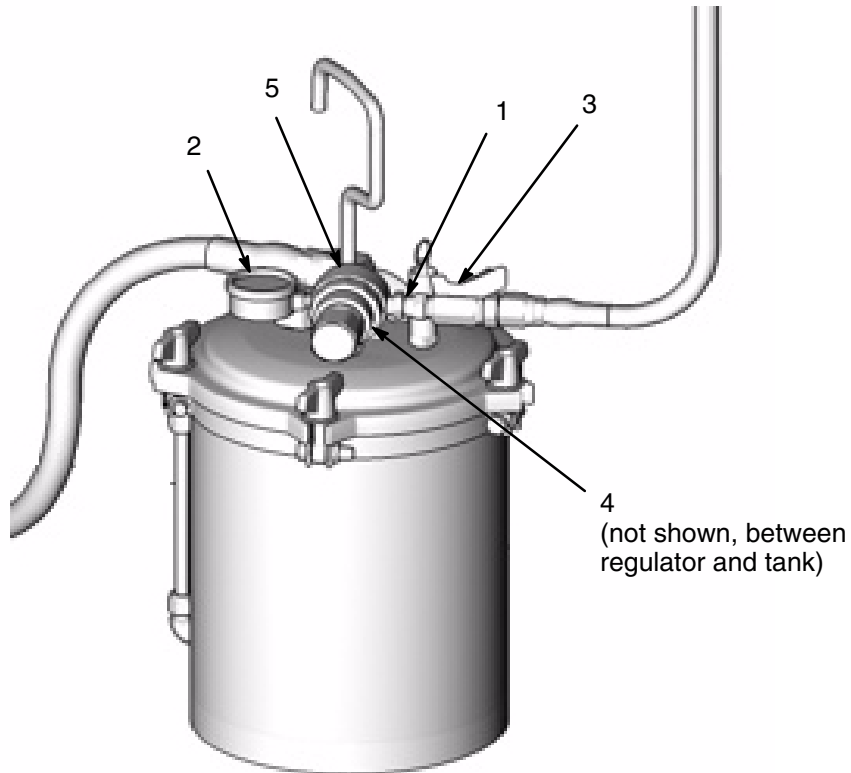


Parts

Use Only Genuine Graco Parts and Accessories

Part No. 248432 Pressure Feed Kit

Ref No.	Part No.	Description	Qty	Ref No.	Part No.	Description	Qty
1	208434	FITTING, adapter, union	1				
2	104655	Gauge, air pressure	1	4	151519	FITTING, nipple, reducing	1
3	208390	VALVE, ball	1	5	104815	REGULATOR, air	1



Spare Parts Kits

Part No.	Description
198421	Desiccant dryer tubes (4 pack of 15B308)
112077	Tank liners (5 pack of 113909)
112078	Tank liners (25 pack of 113909)

Graco Standard Warranty

Graco warrants all equipment manufactured by Graco and bearing its name to be free from defects in material and workmanship on the date of sale to the original purchaser. With the exception of any special, extended, or limited warranty published by Graco, Graco will, for a period of twelve months from the date of sale, repair or replace any part of the equipment determined by Graco to be defective. This warranty applies only when the equipment is installed, operated and maintained in accordance with Graco's written recommendations.

This warranty does not cover, and Graco shall not be liable for general wear and tear, or any malfunction, damage or wear caused by faulty installation, misapplication, abrasion, corrosion, inadequate or improper maintenance, negligence, accident, tampering, or substitution of non-Graco component parts. Nor shall Graco be liable for malfunction, damage or wear caused by the incompatibility of Graco equipment with structures, accessories, equipment or materials not supplied by Graco, or the improper design, manufacture, installation, operation or maintenance of structures, accessories, equipment or materials not supplied by Graco.

This warranty is conditioned upon the prepaid return of the equipment claimed to be defective to an authorized Graco distributor for verification of the claimed defect. If the claimed defect is verified, Graco will repair or replace free of charge any defective parts. The equipment will be returned to the original purchaser transportation prepaid. If inspection of the equipment does not disclose any defect in material or workmanship, repairs will be made at a reasonable charge, which charges may include the costs of parts, labor, and transportation.

THIS WARRANTY IS EXCLUSIVE, AND IS IN LIEU OF ANY OTHER WARRANTIES, EXPRESS OR IMPLIED, INCLUDING BUT NOT LIMITED TO WARRANTY OF MERCHANTABILITY OR WARRANTY OF FITNESS FOR A PARTICULAR PURPOSE.

Graco's sole obligation and buyer's sole remedy for any breach of warranty shall be as set forth above. The buyer agrees that no other remedy (including, but not limited to, incidental or consequential damages for lost profits, lost sales, injury to person or property, or any other incidental or consequential loss) shall be available. Any action for breach of warranty must be brought within two (2) years of the date of sale.

Graco makes no warranty, and disclaims all implied warranties of merchantability and fitness for a particular purpose in connection with accessories, equipment, materials or components sold but not manufactured by Graco. These items sold, but not manufactured by Graco (such as electric motors, switches, hose, etc.), are subject to the warranty, if any, of their manufacturer. Graco will provide purchaser with reasonable assistance in making any claim for breach of these warranties.

In no event will Graco be liable for indirect, incidental, special or consequential damages resulting from Graco supplying equipment hereunder, or the furnishing, performance, or use of any products or other goods sold hereto, whether due to a breach of contract, breach of warranty, the negligence of Graco, or otherwise.

FOR GRACO CANADA CUSTOMERS

The parties acknowledge that they have required that the present document, as well as all documents, notices and legal proceedings entered into, given or instituted pursuant hereto or relating directly or indirectly hereto, be drawn up in English. Les parties reconnaissent avoir convenu que la rédaction du présente document sera en Anglais, ainsi que tous documents, avis et procédures judiciaires exécutés, donnés ou intentés à la suite de ou en rapport, directement ou indirectement, avec les procédures concernées.

Graco Information

TO PLACE AN ORDER, contact your Graco distributor, or call one of the following numbers to identify the distributor closest to you:

1-800-328-0211 Toll Free

612-623-6921

612-378-3505 Fax

All written and visual data contained in this document reflects the latest product information available at the time of publication. Graco reserves the right to make changes at any time without notice.

MM 309192

Graco Headquarters: Minneapolis
International Offices: Belgium, China, Japan, Korea

GRACO INC. P.O. BOX 1441 MINNEAPOLIS, MN 55440-1441

www.graco.com

PRINTED IN USA 309192 06/2000 Revised 03/2006