



GTP10 & GTP12 - Apex™

Electric Dispensing and Transfer Pumps
for Fuel, Diesel, Oil and Anti-freeze



Durable Pumping Solutions for Fluid Transfer Applications

- For fuel, diesel, oil and anti-freeze
- Heavy-duty design for long life and improved productivity
- Wide range of models in DC and AC configurations
- Low operating and installation costs

PROVEN QUALITY. LEADING TECHNOLOGY.

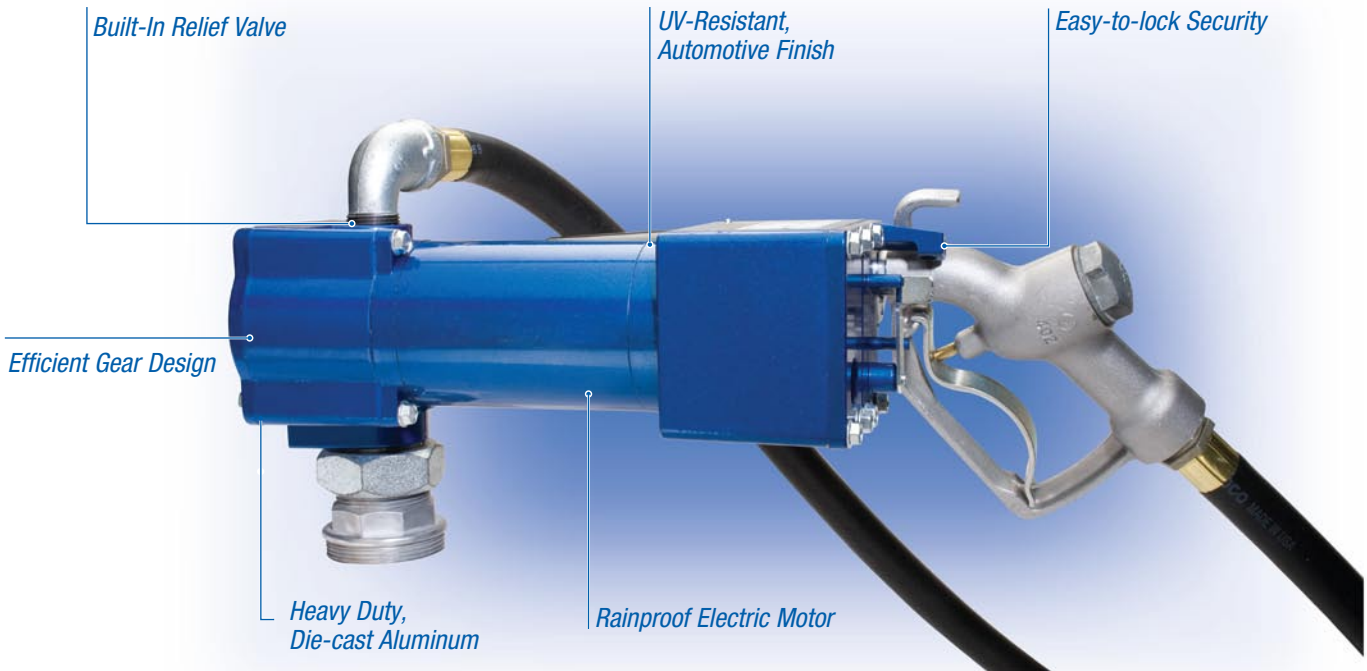
Graco GTP10 & GTP12 Fuel Transfer Pump

Whether it's at the job site, on the farm, the plant or out having fun, don't get slowed down waiting for fuel. The Graco® Blue Thunder is the pump you need to make sure you keep moving!

- Available in 12 VDC, 24 VDC, 115 VAC and 230 VAC
- Installation kit includes all necessary parts
- Up to 45 lpm (12 gpm)

A tough pump for tough conditions, designed for long-life and efficient operation:

- UL Listed for gasoline, diesel fuel, kerosene and fuel oil (260560)
- Motors are designed for 30 minute duty cycle – 1125 liters (300 gallons) per run cycle
- Built-in relief valve and strainer
- Die-cast aluminum construction is lightweight and corrosion resistant
- Designed for installation on all tank designs including “L” shaped tanks



Fuel Meters

Graco fuel meters give trouble-free service for measuring the delivery of gasoline, kerosene and diesel fuel. Meters may be mounted for fast, efficient fueling of your equipment.

Features & Benefits

Cast aluminum construction for corrosion resistance

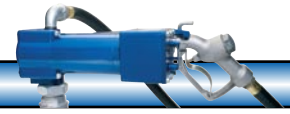
- Lightweight and compact design
- Factory calibrated for diesel fuel
- Large, easy-to-read display
- 99.9 gallon or liter resettable counter
- 9999.9 gallon or liter totalizer
- 15 to 75 lpm range (4 to 20 gpm)
- 3.5 bar (50 psi) maximum



260405 Fuel meter (U.S.) - displays in gallons
3/4 npt inlet and outlet ports

260414 Fuel meter (metric) - displays in liters
3/4 npt inlet and outlet ports

Technical Specifications



GTP Fuel Transfer Pump

Part No.	260560	260562
Voltage	12 VDC	24 VDC
Inlet Port	1npt	1npt
Outlet Port	3/4 npt	3/4 npt
Current	12,5 A	7 A
Power Cord	5.5 m (18 ft)	5.5 m (18 ft)
Hose	19 mm x 3.7 m (3/4 in x 12 ft)	19 mm x 3.7 m (3/4 in x 12 ft)
Suction Tube	25 mm x 0.9 m (1 in x 34 in)	25 mm x 0.9 m (1 in x 34 in)
Weight	9 kg (20 lbs)	9 kg (20 lbs)
Max. Fluid Flow	38 lpm (10 gpm)	38 lpm (10 gpm)
Instruction manual	312575	312575

Part No.	260566	260564
Voltage	115 VAC	230 VAC
Inlet Port	1npt	1npt
Outlet Port	3/4 npt	3/4 npt
Current	2 A	1 A
Power Cord	NA	NA
Hose	19 mm x 3.7 m (3/4 in x 12 ft)	19 mm x 3.7 m (3/4 in x 12 ft)
Suction Tube	25 mm x 0.9 m (1 in x 34 in)	25 mm x 0.9 m (1 in x 34 in)
Weight	9 kg (20 lbs)	9 kg (20 lbs)
Max. Fluid Flow	45 lpm (12 gpm)	45 lpm (12 gpm)
Instruction manual	312575 Rev.C	312575 Rev.C

Ordering Information

Part No.	Description
260560	12V Fuel Pump with Manual Nozzle
260561	12V Fuel Pump with Automatic Nozzle
260562	24V Fuel Pump with Manual Nozzle
260563	24V Fuel Pump with Automatic Nozzle
260564	230V Fuel Pump with Manual Nozzle
260565	230V Fuel Pump with Automatic Nozzle
260566	115V Fuel Pump with Manual Nozzle
260567	115V Fuel Pump with Automatic Nozzle
260568	115V Fuel Pump with Unleaded Manual Nozzle
260569	115V Fuel Pump with Unleaded Automatic Nozzle

GTP Kit

Includes pump, fuel nozzle, bung adapter, 0.9 m (34 in) suction tube, 3.7 m (12 ft) grounded hose, elbow fitting, 5.5 m (18 ft) power cable, wire nuts and strain relief.*

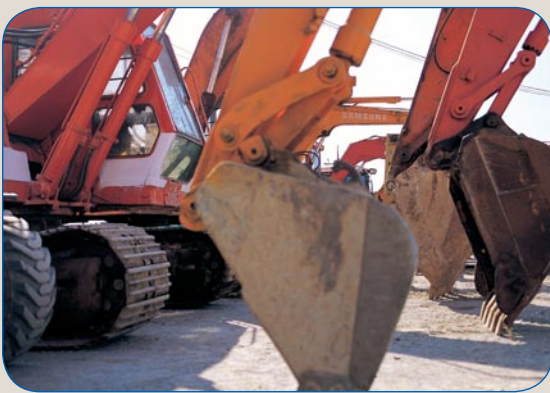


Accessories

- 260078** Unleaded nozzle
- 260083** Unleaded nozzle with auto shut-off
- 260079** Regular/diesel nozzle
- 260082** Regular/diesel nozzle with auto shut-off
- 260523** 2.4 m x 3/4 inch (8 ft) npt UL Listed hose
- 260521** 3.7 m x 3/4 inch (12 ft) npt UL Listed hose



*AC units do not include power cable, wire nuts or strain relief.



Key Fluids

- Synthetic oil
- Petroleum oil*
- Used oil*
- Antifreeze
- Hydraulic fluids
- Cutting oils
- Liquid soap
- Non-flammable oil based solvents
- Oil based herbicide carriers

* Not for food grade use

Key Applications

- Filling bulk tanks from drums
- Lubricant transfer from remote locations
- Construction equipment
- Agricultural equipment
- Filling in-plant machinery
- Evacuating used oil receivers
- Filling shop oil furnaces with new or used oil
- Automotive and truck service garages
- Fleet marine and personal boat service
- Aircraft maintenance

Efficiently Transfer Bulk Oils and Hydraulic Fluids

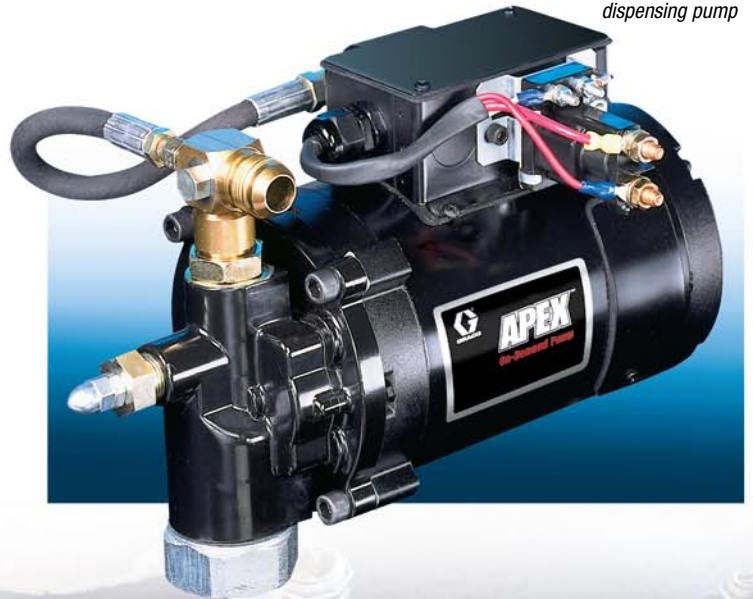
At Graco®, we provide durable pumping solutions for all of your oil and fluid transfer applications.

Our line of APEX pumps is available in AC and DC configurations to meet your fluid transfer needs!

Features and Benefits

- **Self priming**, positive displacement pump for high volume applications.
- **Rugged design** offers long life and improved productivity.
- **Low operating** and installation costs.
- **Transfers used oil** with inlet suction screen (260306).
- **All units** ship with bung adapter.

APEX 12 volt DC on-demand dispensing pump



APEX 115 VAC oil transfer system



A Complete Line of Pumps

APEX Oil Transfer Pumps

Graco's APEX transfer pumps are designed specifically to transfer bulk oils and hydraulic fluids anywhere. Larger horsepower motors offer flow rates up to 30 liter per minute (8 gallons).

- Available with 12 VDC, 115 VAC and 230 VAC electric motors
- TENV electric motor for demanding environments, models 260105, 260106, 260108 and 260109
- Self priming, positive displacement design
- Pumps petroleum and synthetic based lubricants up to 30 liter per minute (8 gallons)
- Built in bypass valve
- Transfer used oil with inlet suction screen (260306)
- System includes suction tube, fluid hose, dispense valve and bung adapter for models 260100, 260101, 260102 and 260104



APEX 115 VAC oil transfer system



APEX 115 VAC oil transfer pump

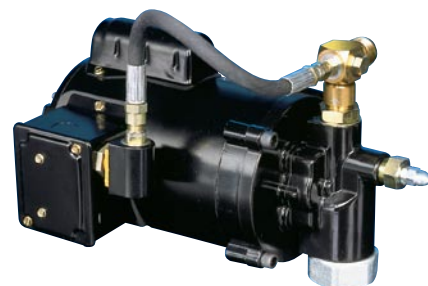
APEX On-Demand Dispensing Pumps

Keep air available for shop tools with this on-demand pump! With output up to 44 bar (650 psi) and 15 lpm (4 gpm), you can easily add oil dispense capabilities to your existing operation.

- Available in 12 VDC and 115 VAC
- On-demand pressure sensing system starts and stops the pump
- TENV electric motor for demanding environments
- Extremely quiet pump operation
- Output flow is continuous and non-pulsating
- Low operating and installation costs
- Inlet and outlet check valves with thermal relief valves included
- All units include bung adapter



APEX 12 volt DC on-demand dispensing pump



APEX 115 volt AC on-demand dispensing pump

Ordering Information



APEX Oil Transfer System

Part No.	260100	260101	260102*	260104
Motor	12 VDC	115 VAC	115 VAC	230 VAC
Hertz	NA	60 Hz	60 Hz	50/60 Hz
Horsepower	0.75	0.50	0.75	0.50
Max. current	35 A	9.2 A	9.2 A	4.0 A
Max. flow rate	22 lpm (5.8 gpm)	16 lpm (4.25 gpm)	30 lpm (8.0 gpm)	16 lpm (4.25 gpm)
Max. pressure	4.5 bar (65 psi)	4.5 bar (65 psi)	2.1 bar (30 psi)	4.5 bar (65 psi)
Inlet port	1 npt(f)	1 npt(f)	1 npt(f)	1 npt(f)
Outlet port	3/4 npt(f)	3/4 npt(f)	3/4 npt(f)	3/4 npt(f)
Weight	15 kg (34 lbs)	11 kg (25 lbs)	11 kg (25 lbs)	11 kg (25 lbs)
Instruction manual	311305	311305	311305	311305

Note: All oil transfer systems come with 3/4 in x 8 ft hose, 1 in x 3/4 in suction tube and 3/4 in outlet dispense valve

*Designed for fluid viscosities of 1000 centistokes or less. If fluid viscosity is greater than 1000 centistokes use part number 260101.



APEX Oil Transfer Pumps

Part No.	260105*	260106	260108	260109
Motor	115 VAC	115 VAC	115 VAC	115 VAC
Hertz	60 Hz	60 Hz	60 Hz	60 Hz
Horsepower	0.75	0.75	0.75	1.00
Max. current	7.5 A	7.5 A	9.0 A	11.0 A
Max. flow rate	11 lpm (3.0 gpm)	11 lpm (3.0 gpm)	15 lpm (4.0 gpm)	30 lpm (8.0 gpm)
Max. pressure	10 bar (150 psi)	10 bar (150 psi)	10 bar (150 psi)	10 bar (150 psi)
Inlet port	1 npt	1 npt	1 npt	1 npt
Outlet port	3/4 npt	3/4 npt	3/4 npt	3/4 npt
Weight	11 kg (25 lbs)	11 kg (25 lbs)	11 kg (25 lbs)	14 kg (30 lbs)
Instruction manual	311306	311306	311306	311306

Note: All oil transfer pumps come with bung adapter.

*Part no. 260105 is a wall mount unit



APEX On-Demand Pumps

Part No.	260110	260111	260113	260114	260112
Voltage	115 VAC	115 VAC	115 VAC	115 VAC	12 VDC
Hertz	60 Hz	60 Hz	60 Hz	60 Hz	N/A
Horsepower	0.75	1.00	1.50	2.00	0.75
Max. current	10,6 A	13,6 A	18 A	21 A	62 A
Max. flow rate	9 lpm (2.3 gpm)	11 lpm (3 gpm)	16 lpm (4.0 gpm)	16 lpm (4.0 gpm)	11 lpm (3 gpm)
Max. pressure	25 bar (370 psi)	38 bar (550 psi)	32 bar (470 psi)	45 bar (650 psi)	28 bar (400 psi)
Inlet port	3/4 npt	3/4 npt	3/4 npt	3/4 npt	3/4 npt
Outlet port	-12 JIC (m)	-12 JIC (m)	-12 JIC (m)	-12 JIC (m)	-12 JIC (m)
Weight	12 kg (27 lb)	15 kg (32 lb)	19 kg (41 lb)	24 kg (52 lb)	12 kg (27 lb)
Instruction manual	311307	311307	311307	311307	311307

Note: All on-demand pumps come with bung adapter

Accessories

Graco Oil Meter

Designed to use with oil transfer pumps to measure oil delivery in quarts, the Graco oil meter has a resettable counter that will register up to 99.9 quarts.

- Large easy-to-read display
- 8 to 76 lpm (2 to 20 gpm) flow range
- Cast aluminum construction
- Lightweight, compact design
- 9999.9 quart non-resettable totalizer
- 5.5 bar (80 psi) maximum pressure
- For use with APEX Oil Transfer Systems, models 260100, 260101, 260102 and 260104
- Instruction manual 311310



Ordering Information

260415 Oil Meter

3/4" npt inlet and outlet ports
Displays in quarts

260145 Wall Mounting Bracket

Fits all models

260238 "Y" Strainer

3/4" npt female in-line strainer
for used oil transfer

260306 Inlet Suction Screen Assembly

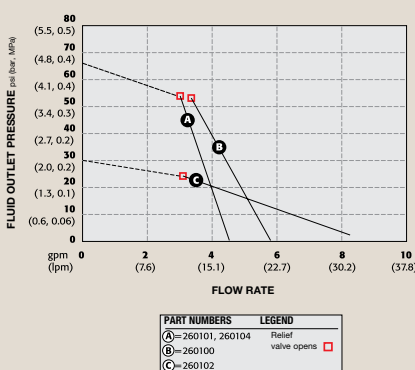
Required for used oil applications,
20 mesh screen

260124 55 in (1.3 m) PVC Suction Tube

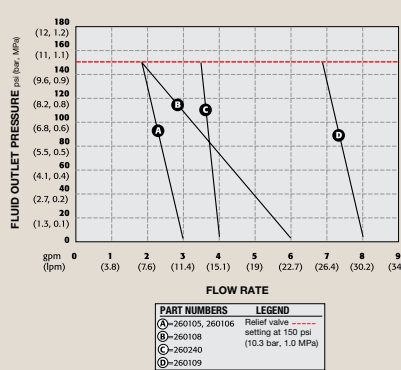
With inlet check valve

Performance Charts

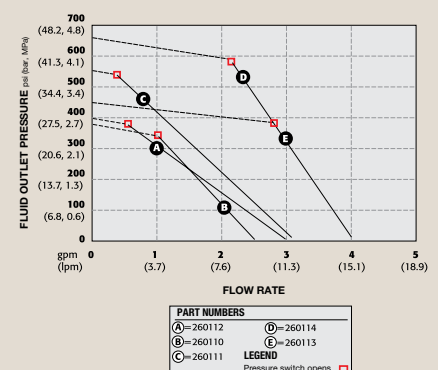
Oil Transfer System



Oil Transfer Pumps



On-Demand Pumps





ABOUT GRACO

Founded in 1926, Graco is a world leader in fluid handling systems and components. Graco products move, measure, control, dispense and apply a wide range of fluids and viscous materials used in vehicle lubrication, commercial and industrial settings.

The company's success is based on its unwavering commitment to technical excellence, world-class manufacturing and unparalleled customer service. Working closely with qualified distributors, Graco offers systems, products and technology that set the quality standard in a wide range of fluid handling solutions. Graco provides equipment for spray finishing, protective coating, paint circulation, lubrication, and dispensing sealants and adhesives, along with power application equipment for the contractor industry. Graco's ongoing investment in fluid management and control will continue to provide innovative solutions to a diverse global market.

GRACO LOCATIONS

CONTACT

MAILING ADDRESS

P.O. Box 1441
Minneapolis, MN 55440-1441
Tel: 612.623.6000
Fax: 612.623.6777

AMERICAS

MINNESOTA

Worldwide Headquarters
Graco Inc.
88-11th Avenue N.E.
Minneapolis, MN 55413

EUROPE

BELGIUM

European Headquarters
Graco N.V.
Industrieterrein-Oude Bunders
Slakweidestraat 31
3630 Maasmechelen,
Belgium
Tel: 32.89.770.700
Fax: 32.89.770.777

ASIA PACIFIC

JAPAN

Graco K.K.
1-27-12 Hayabuchi
Tsuzuki-ku
Yokohama City, Japan 2240025
Tel: 81.45.593.7300
Fax: 81.45.593.7301

ASIA PACIFIC

CHINA

Graco Hong Kong Ltd.
Representative Office
Room 118 1st Floor
No.2 Xin Yuan Building
No.509 Cao Bao Road
Shanghai, P.R. China 200233
Tel: 86.21.649.50088
Fax: 86.21.649.50077

ASIA PACIFIC

KOREA

Graco Korea Inc.
Choheung Bank Building
4th Floor #1599
Gwanyang-Dong, Dongan-Ku,
Anyang-Si, Gyunggi-Do,
Korea 431-060
Tel: 82(Korea).31.476.9400
Fax: 82(Korea).31.476.9801

All written and visual data contained in this document are based on the latest product information available at the time of publication.
Graco reserves the right to make changes at any time without notice.

Graco is certified ISO 9001.

Europe
+32 89 770 700
FAX +32 89 770 777
WWW.GRACO.BE