

GX-16™ Shutoff Valve Kit

333083A
EN

For preventing chemical flow to the dispense applicator at the main hose and whip hose connection. For professional use only.



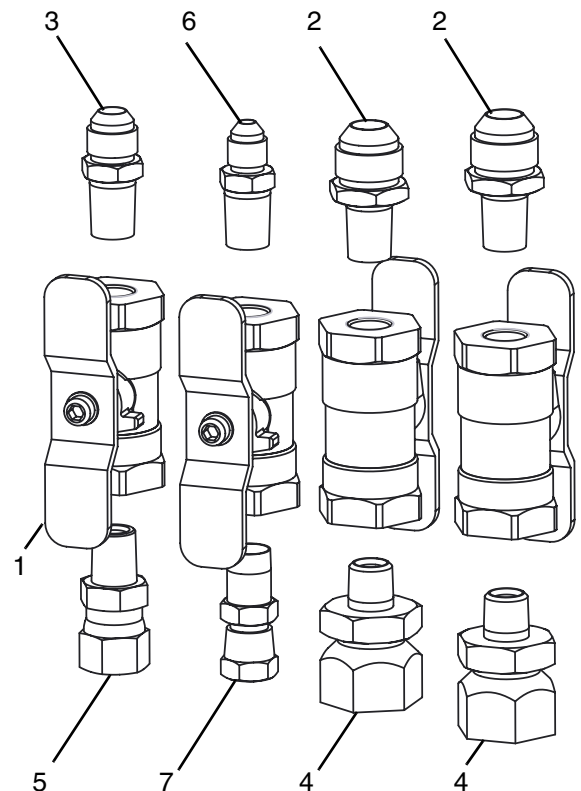
Important Safety Instructions







Read all warnings and instructions in this manual and in the HFR™ for NVH Foam manual. Save all instructions.

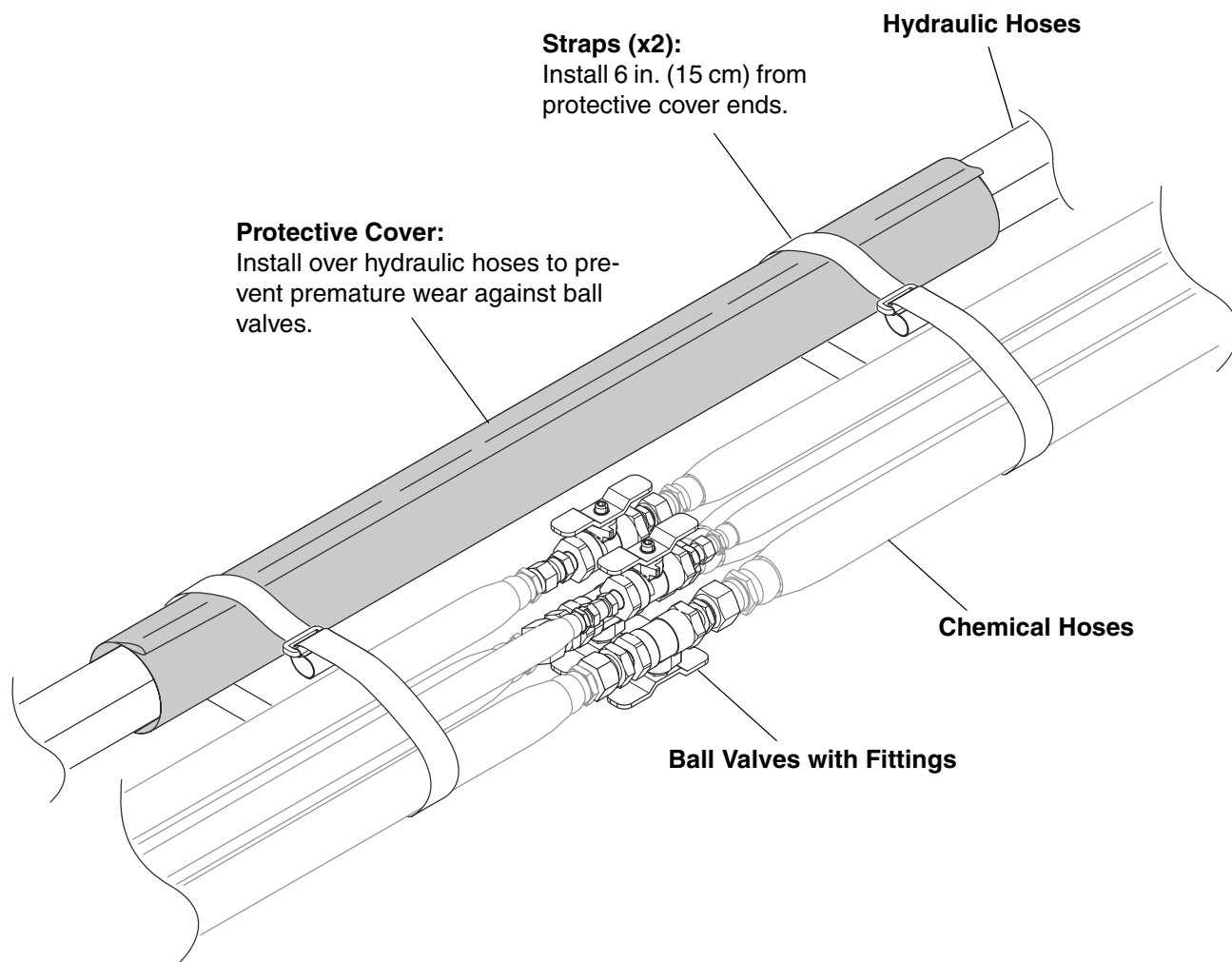
Ref	Part	Description	Quantity	
			24N368, Stainless	24M596, Carbon
1	---	VALVE, ball, 2 way, 1/4 NPT	4	4
2	---	STRAIGHT, 08 JIC	2	
	---	STRAIGHT, 08 JIC - Carbon		2
3	---	STRAIGHT, 06 JIC	1	
	---	STRAIGHT, 06 JIC		1
4	---	SWIVEL, 08 JIC	2	
	---	SWIVEL, 05 JIC - Carbon		2
5	---	STRAIGHT, 04 JIC	1	
	---	SWIVEL, 06 JIC		1
6	---	SWIVEL, 06 JIC	1	
	---	STRAIGHT, 06 JIC		1
7	---	SWIVEL, 04 JIC	1	
	---	SWIVEL, 06 JIC		1
10*	16X972	SLEEVE, nylon	1	1
11*	114271	STRAP, retaining	2	2

--- Not available for individual sale.

* Not shown



						
<p>To avoid injury, follow the Shutdown procedure found in the HFR for NVH Foam manual before installing the kit.</p>						



All written and visual data contained in this document reflects the latest product information available at the time of publication. Graco reserves the right to make changes at any time without notice.

For patent information, see www.graco.com/patents.

Original instructions. This manual contains English. MM 333083

Graco Headquarters: Minneapolis

International Offices: Belgium, China, Japan, Korea

GRACO INC. AND SUBSIDIARIES • P.O. BOX 1441 • MINNEAPOLIS MN 55440-1441 • USA

Copyright 2013, Graco Inc. All Graco manufacturing locations are registered to ISO 9001.

www.graco.com