

Merkur[®] Air Control Panel Kits

407055A

EN

For use with X48 and X72 Merkur High Pressure Sprayers.

100 psi (0.7 MPa, 7 bar) Maximum Working Pressure



Important Safety Instructions

Read all warnings and instructions in this manual and in your air motor and spray package manual. Save these instructions.

16U948, X48 Air Control Panel Kit

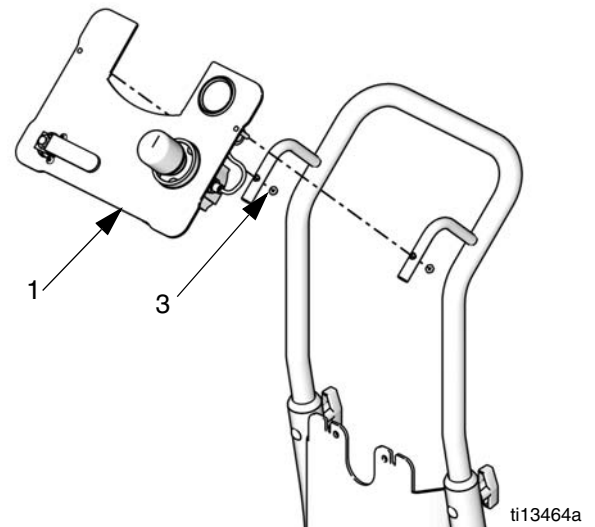
16U947, X72 Air Control Panel Kit

Prepare to Install

1. Relieve the pressure. Follow instructions in your air motor manual.
2. Disconnect the air line to the motor and any existing regulators and gauges.

Install

Use the lock nuts (3) provided to attach the air control panel (1) directly to the cart, as shown.



Turn over for setup instructions and parts.

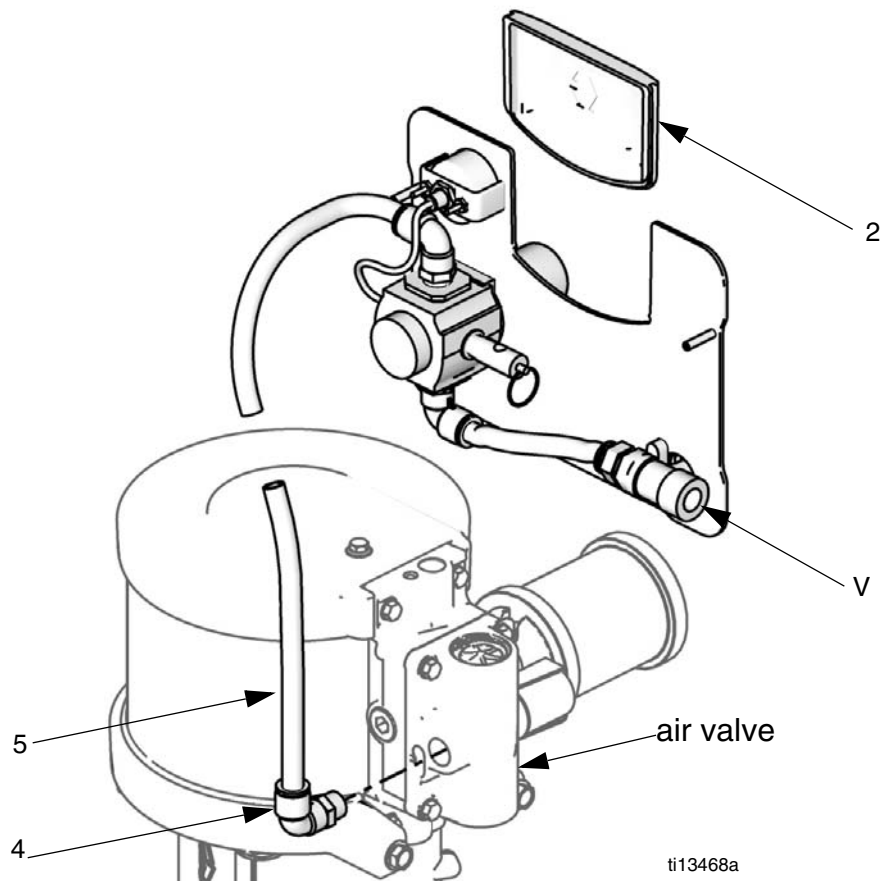
Setup

1. Snap the insert (2) into place.
2. Remove any existing inlet air fittings from the air valve.
3. Connect elbow (4) into the air valve.
4. Connect tubing (5) from the elbow on the air valve to the elbow on the control panel. Cut the tubing to the length needed.
5. Connect main air line to the bleed-type master air valve (V).

Parts

16U948, X48 Air Control Panel Kit 16U947, X72 Air Control Panel Kit

Ref.	Description	Qty.
1	PANEL, air control, 100 psi (0.7 MPA, 7 bar), with pump regulator only, no gun regulator	1
2	INSERT, control panel	1
3	NUT, lock	2
4	ELBOW, 1/2 npt x 1/2 tube	1
5	TUBE, nylon, 1/2 in. (12.7 mm) OD	1
6	COVER, lens, 12 per sheet	1



All written and visual data contained in this document reflects the latest product information available at the time of publication. Graco reserves the right to make changes at any time without notice.

For patent information, see www.graco.com/patents.

Original instructions. This manual contains English. MM 407055

Graco Headquarters: Minneapolis

International Offices: Belgium, China, Japan, Korea

GRACO INC. AND SUBSIDIARIES • P.O. BOX 1441 • MINNEAPOLIS MN 55440-1441 • USA
Copyright 2013, Graco Inc. All Graco manufacturing locations are registered to ISO 9001.

www.graco.com