

# Intake Valve Repair Kit

407065B

for T1 2:1 Ratio Transfer Pump

EN

*For replacing the intake valve on the T1 transfer pump. For professional use only.*

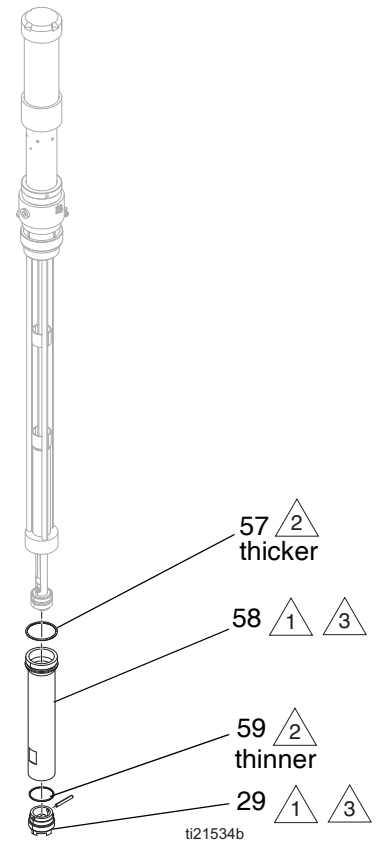
## Kit 24R989






### Important Safety Instructions

Read all warnings and instructions in this manual and in T1 Transfer Pump Instruction Manual. Save all instructions.

Ref	Part	Description	Qty
29	24T262	VALVE, intake	1
57	131227	O-RING, 2.1 in. OD	1
58	26C049	CYLINDER, piston	1
59	103414	O-RING, 1.6 in. OD	1
60	113500	ADHESIVE, anaerobic	1

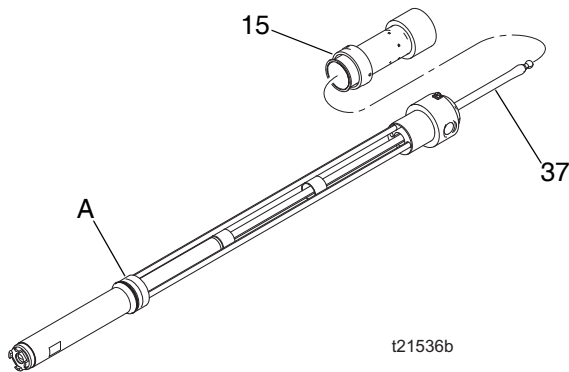


-  1 Torque to 30-35 ft-lb (41-48 N•m).
-  2 Lubricate o-rings.
-  3 Apply medium strength thread locker to threads.

# Installation

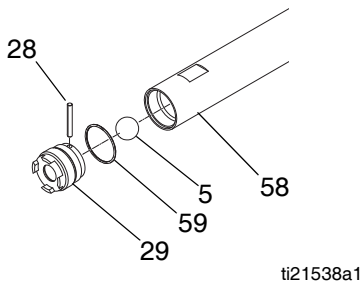
## Disassemble the Pump Lower

1. Unscrew the air motor connecting ring (15). Lay the pump on its side and rotate until the ball on the pump connecting rod (37) releases from the socket in the motor piston rod. Separate the motor from the displacement pump.



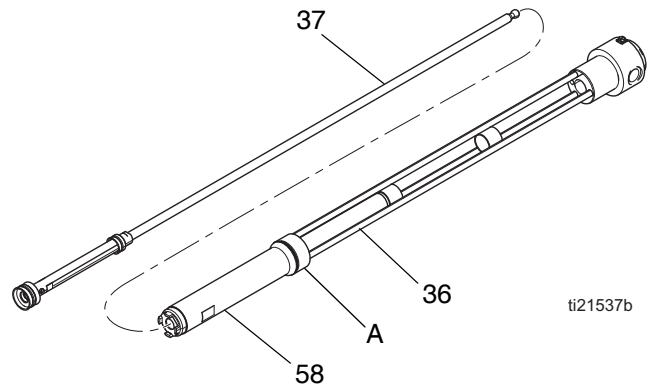
**FIG. 1**

2. Support the pump frame in the area shown (A, see FIG. 1) and unscrew the intake valve housing (29) from the piston cylinder (58). Remove pin (28), o-ring (59) and ball (5) from the intake valve.



**FIG. 2**

3. Push down on the pump connecting rod (37) until fluid piston assembly is clear of displacement pump frame (36). Pull the piston assembly and connecting rod out of the frame.

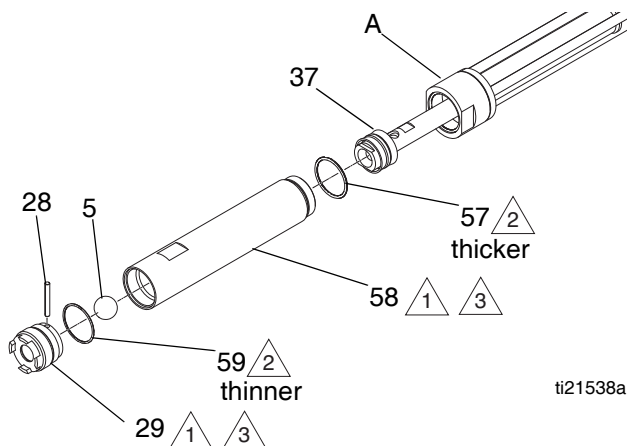


**FIG. 3**

4. Support the pump frame in the area shown (A) and unscrew the piston cylinder (58) from the pump frame (36).
5. Inspect any existing components for damage and replace as necessary. See your transfer pump manual for details.

## Reassemble the Pump Lower

1. Perform **Disassemble the Pump Lower**, page 2.
2. Discard old cylinder, o-ring, and foot valve.
3. Lubricate new o-ring (57) and install on male threaded end of cylinder (58).
4. Apply supplied thread locker to male threads of cylinder (58). Support the pump frame in area shown (A) and screw cylinder onto pump. Torque to 30-35 ft-lb (41-48 N•m).
5. Use a turning motion to install the pump connecting rod assembly (37) into the pump frame assembly.
6. Lubricate thinner o-ring (59) then install on intake valve (29).
7. Apply supplied thread locker to threads of new foot valve (28) and screw into cylinder. Torque to 30-35 ft-lb (41-48 N•m).



ti21538a

- 1 Torque to 30-35 ft-lb (41-48 N•m).
- 2 Lubricate o-rings.
- 3 Apply medium strength thread locker to threads.

**FIG. 4**

# Graco Standard Warranty

Graco warrants all equipment referenced in this document which is manufactured by Graco and bearing its name to be free from defects in material and workmanship on the date of sale to the original purchaser for use. With the exception of any special, extended, or limited warranty published by Graco, Graco will, for a period of twelve months from the date of sale, repair or replace any part of the equipment determined by Graco to be defective. This warranty applies only when the equipment is installed, operated and maintained in accordance with Graco's written recommendations.

This warranty does not cover, and Graco shall not be liable for general wear and tear, or any malfunction, damage or wear caused by faulty installation, misapplication, abrasion, corrosion, inadequate or improper maintenance, negligence, accident, tampering, or substitution of non-Graco component parts. Nor shall Graco be liable for malfunction, damage or wear caused by the incompatibility of Graco equipment with structures, accessories, equipment or materials not supplied by Graco, or the improper design, manufacture, installation, operation or maintenance of structures, accessories, equipment or materials not supplied by Graco.

This warranty is conditioned upon the prepaid return of the equipment claimed to be defective to an authorized Graco distributor for verification of the claimed defect. If the claimed defect is verified, Graco will repair or replace free of charge any defective parts. The equipment will be returned to the original purchaser transportation prepaid. If inspection of the equipment does not disclose any defect in material or workmanship, repairs will be made at a reasonable charge, which charges may include the costs of parts, labor, and transportation.

**THIS WARRANTY IS EXCLUSIVE, AND IS IN LIEU OF ANY OTHER WARRANTIES, EXPRESS OR IMPLIED, INCLUDING BUT NOT LIMITED TO WARRANTY OF MERCHANTABILITY OR WARRANTY OF FITNESS FOR A PARTICULAR PURPOSE.**

Graco's sole obligation and buyer's sole remedy for any breach of warranty shall be as set forth above. The buyer agrees that no other remedy (including, but not limited to, incidental or consequential damages for lost profits, lost sales, injury to person or property, or any other incidental or consequential loss) shall be available. Any action for breach of warranty must be brought within two (2) years of the date of sale.

**GRACO MAKES NO WARRANTY, AND DISCLAIMS ALL IMPLIED WARRANTIES OF MERCHANTABILITY AND FITNESS FOR A PARTICULAR PURPOSE, IN CONNECTION WITH ACCESSORIES, EQUIPMENT, MATERIALS OR COMPONENTS SOLD BUT NOT MANUFACTURED BY GRACO.** These items sold, but not manufactured by Graco (such as electric motors, switches, hose, etc.), are subject to the warranty, if any, of their manufacturer. Graco will provide purchaser with reasonable assistance in making any claim for breach of these warranties.

In no event will Graco be liable for indirect, incidental, special or consequential damages resulting from Graco supplying equipment hereunder, or the furnishing, performance, or use of any products or other goods sold hereto, whether due to a breach of contract, breach of warranty, the negligence of Graco, or otherwise.

## **FOR GRACO CANADA CUSTOMERS**

The Parties acknowledge that they have required that the present document, as well as all documents, notices and legal proceedings entered into, given or instituted pursuant hereto or relating directly or indirectly hereto, be drawn up in English. Les parties reconnaissent avoir convenu que la rédaction du présente document sera en Anglais, ainsi que tous documents, avis et procédures judiciaires exécutés, donnés ou intentés, à la suite de ou en rapport, directement ou indirectement, avec les procédures concernées.

# Graco Information

For the latest information about Graco products, visit [www.graco.com](http://www.graco.com).

For patent information, see [www.graco.com/patents](http://www.graco.com/patents).

**TO PLACE AN ORDER**, contact your Graco distributor or call to identify the nearest distributor.

**Phone:** 612-623-6921 **or Toll Free:** 1-800-328-0211, **Fax:** 612-378-3505

*All written and visual data contained in this document reflects the latest product information available at the time of publication. Graco reserves the right to make changes at any time without notice.*

Original instructions. This manual contains English. MM 407065

**Graco Headquarters:** Minneapolis

**International Offices:** Belgium, China, Japan, Korea

**GRACO INC. AND SUBSIDIARIES • P.O. BOX 1441 • MINNEAPOLIS MN 55440-1441 • USA**  
**Copyright 2018, Graco Inc. All Graco manufacturing locations are registered to ISO 9001.**

[www.graco.com](http://www.graco.com)  
Revision B, April 2019