

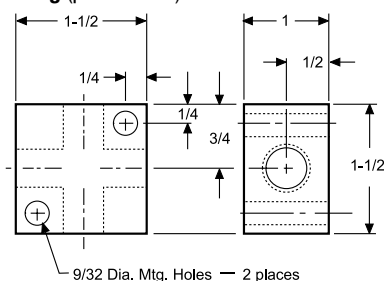
Anchor Fittings

DESCRIPTION

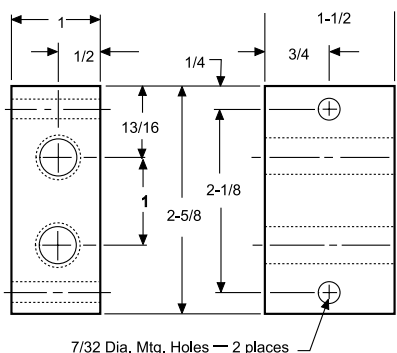
These fittings from Graco® are for use with Trabon® lubrication systems. The fittings are designed for simplicity of use and long life. They provide a solid base for mounting pressure gauges and performance indicators...for connecting hoses to lube lines...for attaching lines to machines or equipment...for adding branch lines or facilitating abrupt changes in line direction.

Dimensions — Inches

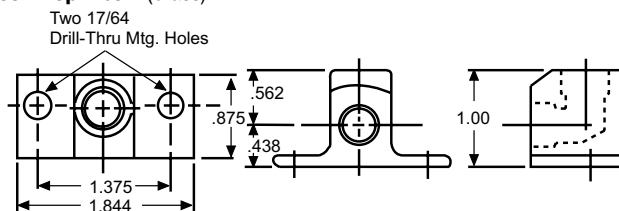
Cross Anchor Fitting (plated steel)



180° Straight Anchor Fitting-2 Lines (plated steel)

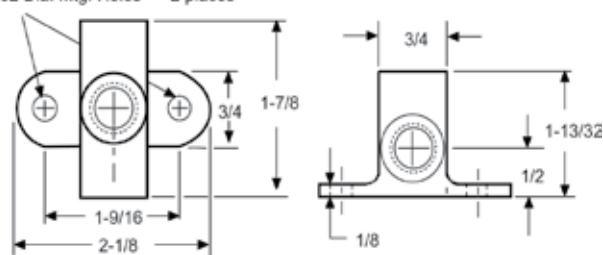


90° Drop Elbow (brass)

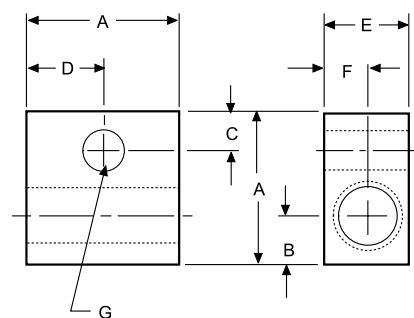


Wing Tee (plated steel)

9/32 Dia. Mtg. Holes — 2 places



180° Straight Anchor Fitting (plated steel)



Part No. (Old)	180° Straight Anchor Fitting Dimensions							
	NPSF	A	B	C	D	E	F	G (DIA)
560540 (509-180-000)	1/8	1-1/4	11/32	5/16	5/8	3/4	3/8	9/32
560541 (509-185-001)	1/4	1-1/2	19/32	5/16	3/4	1.0	3/8	11/32
558910 (509-195-000)	1/2	1-3/4	9/16	7/16	7/8	1-1/4	5/8	1/2

ORDERING INFORMATION

Description	Part No.	Old Part No.
Cross Anchor Fitting - Plated Steel		
1/4 NPSF	560542	509-188-000
1/8 NPSF	560543	509-189-000
180° Straight Anchor Fitting - 2 Lines - Plated Steel		
1/4 NPSF	561430	542-171-000
90° Drop Elbow - Brass		
1/8 NPSF	560535	509-150-000
Wing Tee - Plated Steel		
1/4 NPTF	560537	509-164-001

All written and visual data contained in this document are based on the latest product information available at the time of publication. Graco reserves the right to make changes at any time without notice.

Contact us today!

To receive product information or talk with a Graco representative, call 800-533-9655 or visit us online at www.graco.com.