



Air/Oil Nozzle Adapter

3A2599A

EN

Used with a spindle pump assembly to dispense lubricant to lubrication points.

Part No. 563127







Important Safety Instructions

Read all warnings and instructions in this manual. Save these instructions.

Warnings

The following warnings are for the setup, use, grounding, maintenance, and repair of this equipment. The exclamation point symbol alerts you to a general warning and the hazard symbols refer to procedure-specific risks. When these symbols appear in the body of this manual or on warning labels, refer back to these Warnings. Product-specific hazard symbols and warnings not covered in this section may appear throughout the body of this manual where applicable.

 <h2 style="margin: 0;">WARNING</h2>	
	<p>PRESSURIZED EQUIPMENT HAZARD</p> <p>Fluid from the equipment, leaks, or ruptured components can splash in the eyes or on skin and cause serious injury.</p> <ul style="list-style-type: none"> • Follow the Pressure Relief Procedure when you stop spraying/dispensing and before cleaning, checking, or servicing equipment. • Tighten all fluid connections before operating the equipment. • Check hoses, tubes, and couplings daily. Replace worn or damaged parts immediately.
	<p>EQUIPMENT MISUSE HAZARD</p> <p>Misuse can cause death or serious injury.</p> <ul style="list-style-type: none"> • Do not operate the unit when fatigued or under the influence of drugs or alcohol. • Do not exceed the maximum working pressure or temperature rating of the lowest rated system component. See Technical Data in all equipment manuals. • Use fluids and solvents that are compatible with equipment wetted parts. See Technical Data in all equipment manuals. Read fluid and solvent manufacturer's warnings. For complete information about your material, request MSDS from distributor or retailer. • Do not leave the work area while equipment is energized or under pressure. • Turn off all equipment and follow the Pressure Relief Procedure when equipment is not in use. • Check equipment daily. Repair or replace worn or damaged parts immediately with genuine manufacturer's replacement parts only. • Do not alter or modify equipment. Alterations or modifications may void agency approvals and create safety hazards. • Make sure all equipment is rated and approved for the environment in which you are using it. • Use equipment only for its intended purpose. Call your distributor for information. • Route hoses and cables away from traffic areas, sharp edges, moving parts, and hot surfaces. • Do not kink or over bend hoses or use hoses to pull equipment. • Keep children and animals away from work area. • Comply with all applicable safety regulations.
	<p>PERSONAL PROTECTIVE EQUIPMENT</p> <p>Wear appropriate protective equipment when in the work area to help prevent serious injury, including eye injury, hearing loss, inhalation of toxic fumes, and burns. This protective equipment includes but is not limited to:</p> <ul style="list-style-type: none"> • Protective eyewear, and hearing protection. • Respirators, protective clothing, and gloves as recommended by the fluid and solvent manufacturer.

Pressure Relief Procedure



Follow the Pressure Relief Procedure whenever you see this symbol.



This equipment stays pressurized until pressure is manually relieved. To help prevent serious injury from pressurized fluid, such as skin injection, splashing fluid and moving parts, follow the Pressure Relief Procedure when you stop spraying and before cleaning, checking, or servicing the equipment.

1. On the Spindle Pump Assembly, loosen the purge plug (B) on the air/oil mixing block assembly (A) (FIG. 1).

2. Press the manual run button until oil flows out of the port.

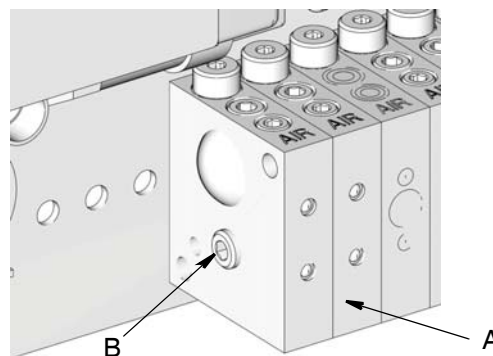


FIG. 1

Installation

Oil/Air Nozzle Adapter Assembly

Nozzle Tubes 560477 and 560478 are available from Graco. Contact your Graco distributor or Graco customer service for assistance when ordering these parts.

NOTE: One nozzle is required for each front or rear bearing group. FIG. 2 shows the three different styles of nozzle tubes available; double-outlet, single-outlet or restrictor outlet.

NOTICE

To avoid excess build up of lubricant around the bearing, drain holes must be provided at the low point of each bearing. Before installation of nozzle tube this modification is required. Review prints to verify the location of all drilling procedures before drilling into or disassembling machining head. Thoroughly remove all debris after drilling to avoid contamination.

Double- or Single-Outlets

1. Modify machining head.
 - a. Disassemble machining head to the point necessary for bearing removal.
 - b. Mark the location where the nozzle is to be installed as determined during system design.
 - c. Drill a 0.187 inch (4.75 mm) hole through the wall to the bearing point.
 - d. Using the hole drilled in step “c” as a pilot hole, drill a 0.516 inch (13.1 mm) hole as deep as possible without breaking through the machining head wall.
 - e. Tap 0.516 inch (13.1 mm) hole to 9/16-18 UNF.
 - f. Drill a minimum 1/8 inch (3.2 mm) hole through the machining head beneath each bearing pocket to allow for drainage.
 - g. Assemble machining head.

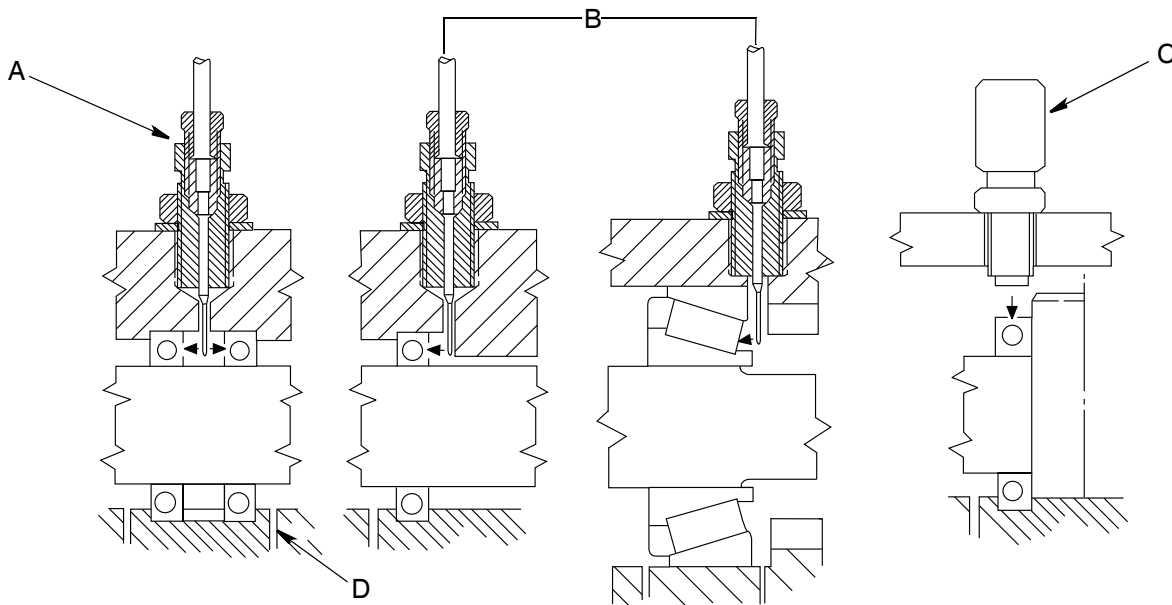


FIG. 2

KEY

- A Double-Outlet
- B Single-Outlet
- C Restrictor Outlet
- D Typ. Drain 1/8 inch (3.2 mm) Minimum

- Determine the length of the nozzle tube required by reviewing machining head prints. This is dimension "N" shown on FIG. 3. Allow 0.625 inches (15.9 mm) extra length for flare and internal length on nozzle assemblies.

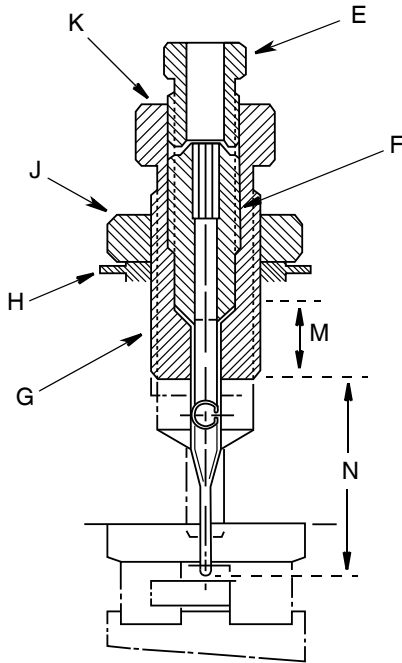


FIG. 3

KEY

- E Flare Nut
- F Retainer
- G Body
- H Thread Seal
- J Locknut
- K Alignment Notch
- M 0.625 inch (15.9 mm)
- N Nozzle Tube

- Cut the nozzle tube with a cut-off wheel.
- Flare tube end with a flaring tool to a 45-degree angle and 0.190 inch diameter (4.8 mm).

NOTICE

Take extreme care when flaring the nozzle tube. Splitting the lip of the flare will make the tube unusable.

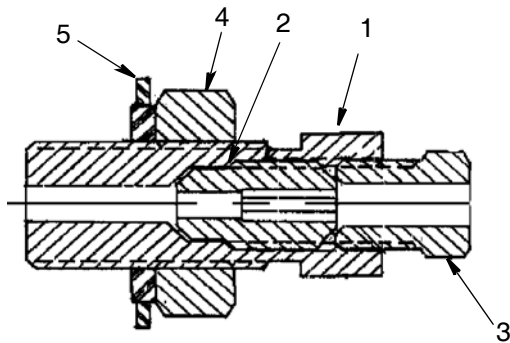
- Use a wrench to remove the flare nut (E).
- Use an allen wrench to remove the 0.125 inch internal hex fitting used to secure the oil nozzle retainer (F) to the body (G).
- Install the nozzle tube (N) in the body (G) and secure it in place with the oil nozzle retainer (F) (FIG. 3).

NOTE:

- Before securing the nozzle tube to the body, ensure there is free-air flow through the nozzle tube.
- The nozzle tube cross section is "D"-shaped and will only enter body one way. Notches on hex portion of body indicate outlet hole position.
- The retainer forms the sealing surface for the delivery tube.

- Place locknut (J) and thread seal (H) on body (G) and install body into 9/16-18 UNF hole in machining head. Thread body into machining head until nozzle tube outlet(s) is/are at correct depth. Make sure notch on body is directed toward bearing location.
 - Secure body in place with locknut (J).
 - Install flare nut (E) on body (G) for safekeeping. The flare nut is used during lube line installation.
 - Install the assembly in the spindle housing taking care to go the proper depth and direction by referring to the alignment notch (a) throughout this process.
- NOTE:** Take care to prevent contaminants from entering the lube ports and ultimately the bearing.
- When the nozzle assembly is installed to the proper depth, firmly lock it in place with the lock nut (J).

Parts



Ref	Part No.	Description	Qty
1		BODY, oil, air, nozzle	1
2		RETAINER, oil nozzle	1
3		NUT, brass, 3/16T inv flared	1
4		NUT	1
5		SEAL, washer, 9/16-18 thread	1

Accessories

560477	NOZZLE TUBE, side 1
560478	NOZZLE TUBE, side 2

FIG. 4

Technical Data

Air/Oil Nozzle Adapter	
Maximum working pressure	350 psi (2.41 MPa, 24.1 bar)
Wetted Materials	Brass, Steel, BUNA-N, Aluminum

Graco Information

For the latest information about Graco products visit, www.graco.com.

For patent information see, www.graco.com/patents.

TO PLACE AN ORDER, contact your Graco distributor or call to identify the nearest distributor.

Phone: 612-623-6928 or **Toll Free:** 1-800-533-9655, **Fax:** 612-378-3590

All written and visual data contained in this document reflects the latest product information available at the time of publication. Graco reserves the right to make changes at any time without notice.

Original instructions. This manual contains English. MM 3A2599

Graco Headquarters: Minneapolis

International Offices: Belgium, China, Japan, Korea

GRACO INC. AND SUBSIDIARIES • P.O. BOX 1441 • MINNEAPOLIS MN 55440-1441 • USA

Copyright 2014, Graco Inc. All Graco manufacturing locations are registered to ISO 9001.

www.graco.com
September 2014