

GENUINE GRACO PARTS AND ACCESSORIES

# 563909 E-Series Pump Kit



### Important Safety Instructions

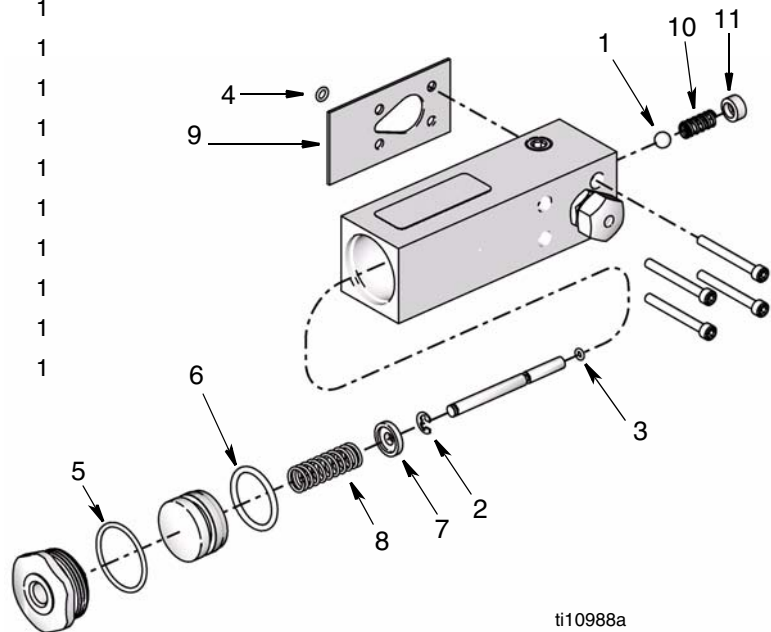
Read all warnings and instructions in your pump manual. Save all instructions.

406682B

Ref.	Description	Qty.
1	BALL, steel, 5/16	1
2	RETAINER, ring	1
3	O-RING	1
4*	O-RING	1
5	O-RING	1
6	O-RING	1
7	RETAINER, spring	1
8	SPRING, piston	1
9†	GASKET, pump	1
10	SPRING, check valve	1
11	RETAINER, spring	1

\* Use between pump and reservoir when pump is being assembled to the molded plastic reservoir.

† Use between pump and reservoir when pump is being assembled to the cylindrical reservoir.



ti10988a

Graco Inc. P.O. Box 1441 Minneapolis, MN 55440-1441

406682 Rev, B 06/2009

Copyright 2007, Graco Inc. is registered to ISO 9001

## Repair Instructions

### Disassembly

1. Using a 3/16 hex wrench, remove spring retainer (11), check valve spring (10) and steel ball (1) from front of pump.
2. Remove piston enclosure plug (1-5/8 hex) from back of pump.
3. With a brass or aluminum rod, carefully push the lube piston out, toward the back of the pump. Remove both the lube and pneumatic pistons.
4. Carefully remove o-rings (3, 5, 6). Discard. For reassembly only use new o-rings from kit.
5. Remove piston spring (8) from lube piston. Replace retainer ring (2) and spring retainer (7) if necessary.
6. Clean pump body and parts with mild solvent.

### Reassembly

1. Be sure pump body and parts are dry before reassembling.
2. When replacing o-rings, spread a light film of grease around the inside of the pneumatic piston bore.
3. Carefully push pneumatic and lube pistons into their bores from back of pump. Push pneumatic piston in until it bottoms out. Then release it to be sure spring returns both pistons. Screw enclosure plug (1-5/8 hex) into back of pump.
4. Tighten enclosure plug to 6 ft-lbs.
5. Insert steel ball (1), check valve spring (10) as shown in illustration on front side of this form.
6. Apply thread lock to spring retainer (11). Install spring retainer with a 3/16 hex wrench to a depth of 0.437 inches from the top of the treads.