

# Lube Master Output Manifold Repair Kit

406687B  
EN




Output manifold repair kit for Lube Master. For professional use only.

Kit No.: 563916, 563938



### Important Safety Instructions

Read all warnings and instructions in this manual and the Lube Master instruction manual 3A2781 included with your unit. Save these instructions.

						
<b>ELECTRIC SHOCK HAZARD</b> This equipment must be grounded. Improper grounding, setup, or usage of the system can cause electric shock. <ul style="list-style-type: none"><li>• Turn off and disconnect power at main switch before disconnecting any cables and before servicing equipment.</li><li>• Connect only to grounded power source.</li><li>• All electrical wiring must be done by a qualified electrician and comply with all local codes and regulations.</li></ul>						

# Instructions

## Pressure Relief Procedure



Follow the Pressure Relief Procedure whenever you see this symbol.



This equipment stays pressurized until pressure is manually relieved. To help prevent serious injury from pressurized fluid, such as skin injection, splashing fluid and moving parts, follow the Pressure Relief Procedure when you stop dispensing and before cleaning, checking, or servicing the equipment.

1. Verify pump is stopped and disconnected from power source.
2. Using a wrench, slowly loosen outlet fitting.

## Disassembly

Reference numbers used in the following instructions refer to page 3 and 4.

1. Relieve pressure and disconnect power to Lube Master, see pressure relief procedure.
2. Remove roll pin (23) and drive pin (5). Tap lightly to avoid possible damage to lube piston.
3. Remove any gauges, plugs, and fittings from the manifold block.
4. Remove the mounting bolts and manifold block assembly from the housing.

## Assembly

Reference numbers used in the following instructions refer to page 3 and 4.

### NOTE:

- Discard any old parts being replaced with new parts in repair kit.
  - For Kit 563916 only, ensure letter “T” (FIG. 1, a) is facing up when installed.
1. Install a new o-ring (11) at the junction of the manifold block and housing.
  2. Mount the manifold block assembly to the pump housing using mounting bolts supplied in the hardware kit.
  3. Tighten mounting bolts to 8 ft-lbs (10.85 N.m).
  4. Attach the lube piston to the drive yoke with new drive (5) and roll pins (23).
  5. Re-install gauges, plugs, and fittings.

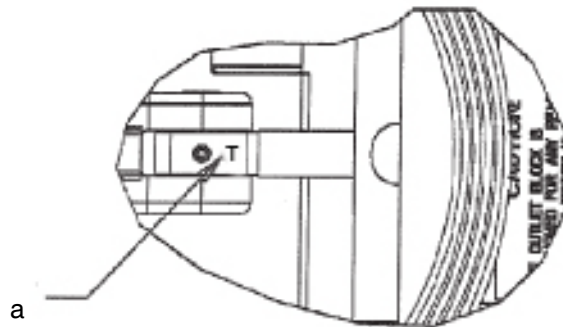
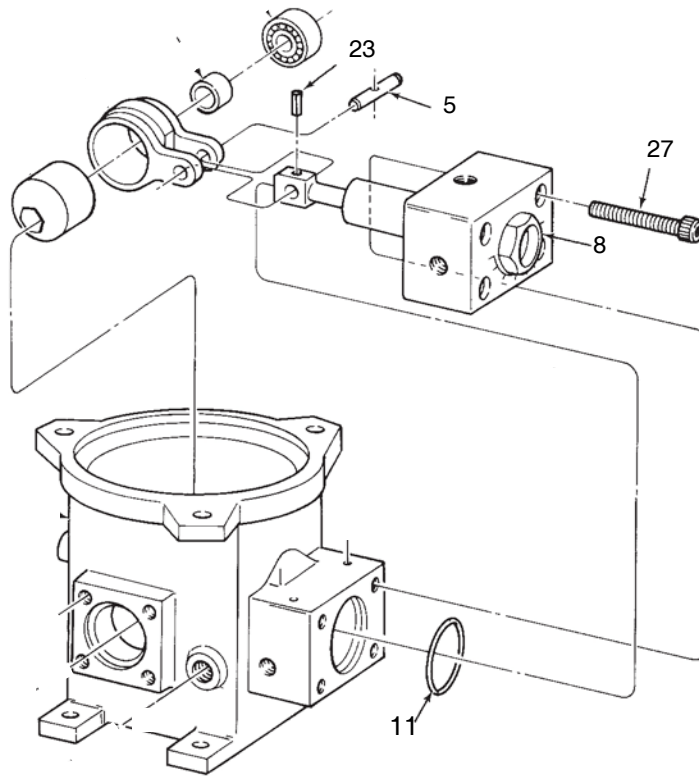
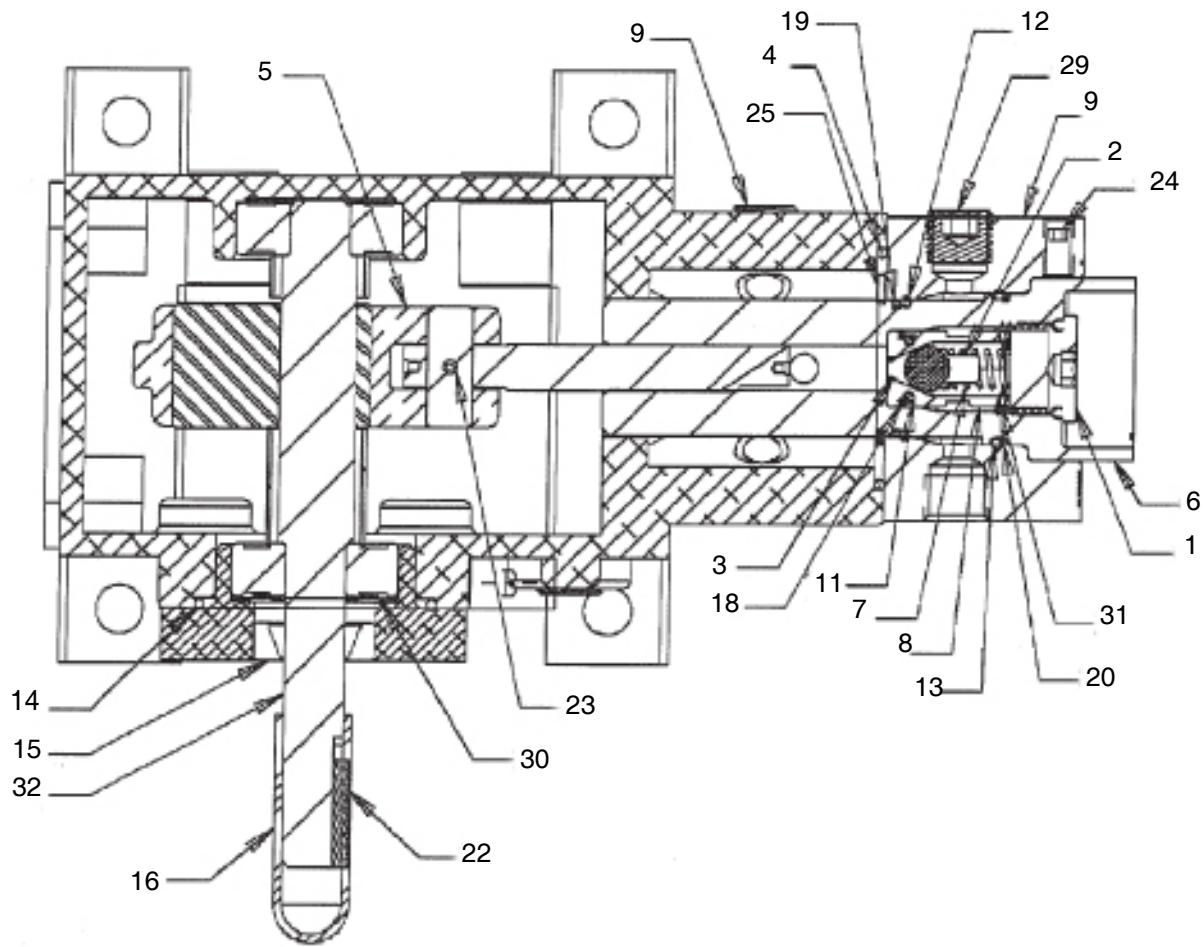


FIG. 1

Refer to Parts List on next page for number references.





Ref.	Description	Qty	Ref.	Description	Qty
1	PLUG, 3/4-16, w/ o-ring	1	15	SEAL, oil, 1/2	1
2	RETAINER, spring	1	16	CAP, protective	1
3	POPPET, check valve	1	18	RING, backup, -014	1
4	GASKET, reservoir	1	19	RING, backup, -022	1
5	PIN, drive	1	20	RING, backup, -024	1
6	PISTON, body assembly	1	22	KEY, square, 1/8 x 7/8	1
7	SPRING, pump	1	23	PIN, roll, 1/8 x .750	1
8	SEAT, valve, check	1	24	SCREW, set, cup point, hex 3/8	1
9	BLOCK, manifold, output	1	25	RING, retaining, 1 1/8	1
10	BALL, shuttle valve, 3/8	1	26	SCREW, soc hd, 5/16-18 x 1/2	4
11	O-RING, buna n, duro-70, 1/16	1	27	SCREW, soc hd, 5/16-18 x 1 3/4	4
12	O-RING, buna n, duro-70, 1/16	1	29	FITTING, plug, pipe, 1/4	3
13	O-RING, buna n, duro-70, 1/16	1	30	WASHER, spring	1
14	O-RING, buna n, duro-70, 3/32	2	31	WASHER, spring, curved	1

All written and visual data contained in this document reflects the latest product information available at the time of publication. Graco reserves the right to make changes at any time without notice.

For patent information, see [www.graco.com/patents](http://www.graco.com/patents).

Original instructions. This manual contains English. MM 406687

**Graco Headquarters:** Minneapolis  
**International Offices:** Belgium, China, Japan, Korea

**GRACO INC. AND SUBSIDIARIES • P.O. BOX 1441 • MINNEAPOLIS MN 55440-1441 • USA**

**Copyright 2013, Graco Inc. All Graco manufacturing locations are registered to ISO 9001.**

[www.graco.com](http://www.graco.com)  
 November 2014