



G3™ Selection Guide

G3 Pumps and Accessories



G3 Standard °

Comes standard with no controller for use with separate or existing machine control for a low cost solution. Capable of sending a low level signal to your external controller or PLC

		Reservoir Size	Part Number	Voltage	Wiper Arm	Follower Plate	External Low Level	Power Connection	
Application	Grease	2 liter	96G000	12 VDC	✓			CPC	
			96G003	12 VDC	✓		✓	CPC	
			96G001	24 VDC	✓			CPC	
			96G005	24 VDC	✓		✓	CPC	
			96G006	24 VDC		✓	✓	CPC	
			96G002	90-240 VAC	✓			DIN	
			96G007	90-240 VAC	✓		✓	DIN	
			96G008	90-240 VAC		✓	✓	DIN	
		4 liter	96G038	12 VDC	✓			CPC	
			96G044	12 VDC	✓		✓	CPC	
			96G040	24 VDC	✓			CPC	
			96G048	24 VDC	✓		✓	CPC	
			96G053	24 VDC		✓	✓	CPC	
			96G042	90-240 VAC	✓			DIN	
			96G055	90-240 VAC	✓		✓	DIN	
			96G062	90-240 VAC		✓	✓	DIN	
		8 liter	96G039	12 VDC	✓			CPC	
			96G045	12 VDC	✓		✓	CPC	
			96G049	24 VDC	✓		✓	CPC	
			96G041	24 VDC	✓			CPC	
			96G043	90-240 VAC	✓			DIN	
			96G056	90-240 VAC	✓		✓	DIN	
		12 liter	96G057	90-240 VAC	✓		✓	DIN	
		12 liter	966171	24 VDC	✓			CPC	
		16 liter	966172	24 VDC	✓			CPC	
		16 liter	96G058	90-240 VAC	✓		✓	DIN	
		Oil	2 liter	96G050	24 VDC	✓		✓	CPC
				96G059	90-240 VAC	✓		✓	DIN
4 liter	96G051		24 VDC	✓		✓	CPC		
	96G060		90-240 VAC	✓		✓	DIN		
8 liter	96G052		24 VDC	✓		✓	CPC		
	96G061		90-240 VAC	✓		✓	DIN		

° = Pressure relief valve required for each outlet - See accessories for options



G3 Pro °

Built-in controller with selectable pump on/pump off timer has low level indicator providing low warning and shut-down alarm. Comes with manual run and password protection with pre-lube function to initiate lube cycle on start-up.

		Reservoir Size	Part Number	Voltage	Manual Run	Wiper Arm	Follower Plate	External Low Level*	Low Level	Power Connection	
Application	Grease	2 liter	96G027	12 VDC		✓				CPC	
			96G033	12 VDC	A	✓		A		CPC-5 Pin	
			96G028	24 VDC		✓					CPC
			96G011	24 VDC	✓	✓		✓			CPC
			96G012	24 VDC	✓		✓	✓			CPC
			96G034	24 VDC	✓	✓			A		CPC-5 Pin
			96G029	90-240 VAC		✓					DIN
			96G013	90-240 VAC		✓				✓	DIN
			96G014	90-240 VAC				✓		✓	DIN
		4 liter	96G135	12 VDC		✓					CPC
			96G147	12 VDC	A	✓			A		CPC-5 Pin
			96G137	24 VDC		✓					CPC
			96G068	24 VDC	✓	✓		✓	✓		CPC
			96G073	24 VDC	✓			✓	✓		CPC
			96G149	24 VDC	A	✓			A		CPC-5 Pin
			96G139	90-240 VAC		✓					DIN
			96G075	90-240 VAC		✓				✓	DIN
			96G082	90-240 VAC				✓		✓	DIN
	8 liter	96G136	12 VDC		✓					CPC	
		96G148	12 VDC	A	✓			A		CPC-5 Pin	
		96G138	24 VDC		✓					CPC	
		96G069	24 VDC	✓	✓		✓	✓		CPC	
		96G150	24 VDC	A	✓			A		CPC-5 Pin	
		96G140	90-240 VAC		✓					DIN	
		96G076	90-240 VAC		✓				✓	DIN	
	12 liter	96G163	24 VDC	A	✓			A		CPC-5 Pin	
		96G077	90-240 VAC		✓				✓	DIN	
	16 liter	96G167	24 VDC	A	✓			A		CPC-5 Pin	
		96G078	90-240 VAC		✓				✓	DIN	
	Oil	2 liter	96G070	24 VDC	✓	✓		✓		CPC	
			96G079	90-240 VAC		✓			✓	DIN	
		4 liter	96G071	24 VDC	✓	✓		✓		CPC	
			96G080	90-240 VAC		✓			✓	DIN	
8 liter		96G072	24 VDC	✓	✓		✓		CPC		
	96G081	90-240 VAC		✓			✓	DIN			

A = On these Pro Control models the remote manual run input, remote low level warning output and power are combined in the CPC-5 Pin connector and cord.

* = External Low Level is indicated on the Manual Run Control device.

° = Pressure relief valve required for each outlet - See accessories for options



G3 Max °

Built-in controller with selectable pump on/pump off timer has low warning and shut-down alarm or set up faults to an external alarm. Comes with manual run and password protection with pre-lube function to initiate lube cycle on start-up. Mix and match up to three cycle and pressure switches for custom installations and feedback. Machine count input is ideally suited for inconsistently used equipment. Optional Data Management System™ (DMS) uses a common USB port to quickly configure, store and transfer error log history to Excel® or Notepad® for longer equipment life and performance.

	Reservoir Size	Part Number	Voltage	# of Cycle/ Press. Input	Machine Count	Vent Valve Output*	Alarm Output	Manual Run	Wiper Arm	Follower Plate	Low Level	Power Connection		
Application	Grease	2 liter	96G030	12 VDC	1				✓		✓	CPC		
			96G021	12 VDC	1-3	✓	✓	✓	✓	✓	✓, B	DIN		
			96G035	12 VDC	1		✓	A	A	✓		A	CPC-5 Pin	
			96G031	24 VDC	1		✓			✓		✓	CPC	
			96G017	24 VDC	1		✓			✓	✓	✓, B	CPC	
			96G018	24 VDC	1		✓			✓	✓	✓, B	CPC	
			96G036	24 VDC	1		✓	✓	A	A	✓		A	CPC-5 Pin
			96G023	24 VDC	1-3	✓	✓	✓	✓	✓	✓	✓, B		DIN
			96G024	24 VDC	1-3	✓	✓	✓	✓	✓	✓	✓, B		DIN
			96G032	90-240 VAC	1		✓				✓		✓	DIN
			96G019	90-240 VAC	1		✓				✓		✓	DIN
			96G020	90-240 VAC	1		✓				✓	✓	✓	DIN
			96G025	90-240 VAC	1-3	✓	✓	✓	✓	✓	✓	✓, B		DIN
			96G026	90-240 VAC	1-3	✓	✓	✓	✓	✓	✓	✓, B		DIN
	96G037	90-240 VAC	1		✓				✓		✓, B	DIN		
	4 liter	96G141	12 VDC	1						✓		✓	CPC	
		96G159	12 VDC	1	✓			A	A	✓		A	CPC-5 Pin	
		96G151	12 VDC	1			✓	A	A	✓		A	CPC-5 Pin	
		96G096	12 VDC	1-3	✓	✓	✓	✓	✓	✓	✓, B		DIN	
		96G143	24 VDC	1						✓		✓	CPC	
		96G088	24 VDC	1			✓		✓	✓	✓, B		CPC	
		96G090	24 VDC	1			✓		✓		✓	✓, B	CPC	
		96G160	24 VDC	1	✓			A	A	✓		A	CPC-5 Pin	
		96G155	24 VDC	1			✓	A	A	✓		A	CPC-5 Pin	
		96G103	24 VDC	1-3	✓	✓	✓	✓	✓	✓	✓, B		DIN	
		96G113	24 VDC	1-3	✓	✓	✓	✓	✓	✓	✓, B		DIN	
		96G145	90-240 VAC	1						✓		✓	DIN	
		96G092	90-240 VAC	1			✓			✓		✓	DIN	
		96G094	90-240 VAC	1			✓			✓	✓	✓	DIN	
	96G118	90-240 VAC	1-3	✓	✓	✓	✓	✓	✓	✓, B		DIN		
	96G128	90-240 VAC	1-3	✓	✓	✓	✓	✓	✓	✓, B		DIN		
	8 liter	96G142	12 VDC	1						✓		✓	CPC	
		96G152	12 VDC	1			✓	A	A	✓		A	CPC-5 Pin	
		96G097	12 VDC	1-3	✓	✓	✓	✓	✓	✓	✓, B		DIN	
		96G144	24 VDC	1						✓		✓	CPC	
		96G089	24 VDC	1			✓		✓	✓	✓, B		CPC	
		96G156	24 VDC	1			✓	A	A	✓		A	CPC-5 Pin	
		96G104	24 VDC	1-3	✓	✓	✓	✓	✓	✓	✓, B		DIN	
		96G093	90-240 VAC	1			✓			✓		✓	DIN	
		96G146	90-240 VAC	1						✓		✓	DIN	
	96G119	90-240 VAC	1-3	✓	✓	✓	✓	✓	✓	✓, B		DIN		
	12 liter	96G164	24 VDC	1			✓	A	A	✓		A	CPC-5 Pin	
96G105		24 VDC	1-3	✓	✓	✓	✓	✓	✓	✓, B		DIN		
96G120		90-240 VAC	1-3	✓	✓	✓	✓	✓	✓	✓, B		DIN		
16 liter	96G168	24 VDC	1			✓	A	A	✓		A	CPC-5 Pin		
	96G106	24 VDC	1-3	✓	✓	✓	✓	✓	✓	✓, B		DIN		
	96G166	90-240 VAC	1			✓			✓		✓	DIN		
	96G121	90-240 VAC	1-3	✓	✓	✓	✓	✓	✓	✓, B		DIN		
Oil	2 liter	96G107	24 VDC	1-3	✓	✓	✓	✓	✓	✓	✓, B	DIN		
		96G122	90-240 VAC	1-3	✓	✓	✓	✓	✓	✓	✓, B	DIN		
	4 liter	96G108	24 VDC	1-3	✓	✓	✓	✓	✓	✓	✓, B	DIN		
		96G123	90-240 VAC	1-3	✓	✓	✓	✓	✓	✓	✓, B	DIN		
	8 liter	96G109	24 VDC	1-3	✓	✓	✓	✓	✓	✓	✓, B	DIN		
96G124	90-240 VAC	1-3	✓	✓	✓	✓	✓	✓	✓	✓, B	DIN			

*Requires purchase of a vent valve kit - See accessories for options

A = On these Max Control models the remote manual run button input, remote alarm output, remote low level output and power are combined in the CPC-5 Pin connector and cord.

B = On these Max Control models, External Low Level is indicated by the Manual Run Control device and/or the Alarm Output

° = Pressure relief valve required for each outlet - See accessories for options

G3 Max with Data Management System °

		Reservoir Size	Part Number	Voltage	# of Cycle/ Press. Input	Machine Count	Vent Valve Output*	Alarm Output	Manual Run	Wiper Arm	Follower Plate	Low Level	Power Connection	
Application	Grease	2 liter	96G098	12 VDC	1-2	✓	✓	✓	✓	✓		✓, B	DIN	
			96G110	24 VDC	1-2	✓	✓	✓	✓	✓		✓, B	DIN	
			96G115	24 VDC	1-2	✓	✓	✓	✓	✓	✓		✓, B	DIN
			96G125	90-240 VAC	1-2	✓	✓	✓	✓	✓			✓, B	DIN
			96G132	90-240 VAC	1-2	✓	✓	✓	✓		✓		✓, B	DIN
		4 liter	96G161	12 VDC	1	✓			A	A	✓		A	CPC-5 Pin
			96G153	12 VDC	1			✓	A	A	✓		A	CPC-5 Pin
			96G099	12 VDC	1-2	✓	✓	✓	✓	✓	✓		✓, B	DIN
			96G162	24 VDC	1	✓			A	A	✓		A	CPC-5 Pin
			96G157	24 VDC	1			✓	A	A	✓		A	CPC-5 Pin
			96G111	24 VDC	1-2	✓	✓	✓	✓	✓	✓		✓, B	DIN
			96G116	24 VDC	1-2	✓	✓	✓	✓	✓		✓	✓, B	DIN
			96G126	90-240 VAC	1-2	✓	✓	✓	✓	✓	✓		✓, B	DIN
		96G133	90-240 VAC	1-2	✓	✓	✓	✓	✓		✓	✓, B	DIN	
		8 liter	96G154	12 VDC	1			✓	A	A	✓		A	CPC-5 Pin
			96G100	12 VDC	1-2	✓	✓	✓	✓	✓	✓		✓, B	DIN
			96G158	24 VDC	1			✓	A	A	✓		✓, B	CPC-5 Pin
			96G112	24 VDC	1-2	✓	✓	✓	✓	✓	✓		✓, B	DIN
	96G127		90-240 VAC	1-2	✓	✓	✓	✓	✓	✓		✓, B	DIN	
	12 liter	96G165	24 VDC	1			✓	A	A	✓		A	CPC-5 Pin	
	16 liter	96G169	24 VDC	1			✓	A	A	✓		A	CPC-5 Pin	
Oil	2 liter	96G174	90-240 VAC	1-2	✓	✓	✓	✓	✓	✓		✓, B	DIN	
	4 liter	96G175	90-240 VAC	1-2	✓	✓	✓	✓	✓	✓		✓, B	DIN	
	8 liter	96G176	90-240 VAC	1-2	✓	✓	✓	✓	✓	✓		✓, B	DIN	

*Requires purchase of a vent valve kit

A = On these Max Control DMS models the remote manual run button input, remote alarm output, remote low level output and power are combined in the CPC-5 Pin connector and cord.

B = On these Max Control models, External Low Level is indicated by the Manual Run Control device and/or the Alarm Output

° = Pressure relief valve required for each outlet - See accessories for options

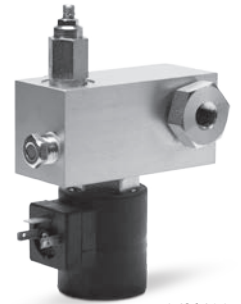
G3 Accessories

Union kit-joint

571063	Two Pump Union Kit—combines the output of the left and right pumps for larger lubrication needs
571026	Three Pump Union Kit—joins the output of the left, right and center pumps for maximum output

Vent Valve Kits

571169	G3 Max Pump Vent Valve Kit—Normally Closed, 12 VDC, adjustable pressure relief, 35-241 bar (500-3500 psi), mounts directly to G3 pump, cable included - NPT
571170	G3 Max Pump Vent Valve Kit—Normally Closed, 24 VDC, (also for G3 Max AC Pumps) adjustable pressure relief, 35-241 bar (500-3500 psi), mounts directly to G3 pump, cable included - NPT
571171	G3 Max Pump Vent Valve Kit—Normally Closed, 12 VDC, adjustable pressure relief, 35-241 bar (500-3500 psi), mounts directly to G3 pump, cable included - BSPP
571172	G3 Max Pump Vent Valve Kit—Normally Closed, 24 VDC, (also for G3 Max AC Pumps) adjustable pressure relief, 35-241 bar (500-3500 psi), mounts directly to G3 pump, cable included - BSPP
24M478	G3 Standard Pump Vent Valve Kit—Normally Open, 12 VDC, adjustable pressure relief, 35-241 bar (500-3500 psi), mounts directly to G3 pump, requires cable with Deutsch connector—see 24N402 - NPT
24M479	G3 Standard Pump Vent Valve Kit—Normally Open, 24 VDC, adjustable pressure relief, 35-241 bar (500-3500 psi), mounts directly to G3 pump, requires cable with Deutsch connector—see 24N402 - NPT
24M480	G3 Standard Pump Vent Valve Kit—Normally Open, 115 VAC, adjustable pressure relief, 35-241 bar (500-3500 psi), mounts directly to G3 pump, requires cable with DIN connector—see 123358 - NPT
24M280	G3 Standard Pump Vent Valve Kit—Normally Open, 230 VAC, adjustable pressure relief, 35-241 bar (500-3500 psi), mounts directly to G3 pump, requires cable with DIN connector—see 123358 - NPT
24M481	G3 Standard Pump Vent Valve Kit—Normally Open, 12 VDC, adjustable pressure relief, 35-241 bar (500-3500 psi), mounts directly to G3 pump, requires cable with Deutsch connector—see 24N402 - BSPP
24M482	G3 Standard Pump Vent Valve Kit—Normally Open, 24 VDC, adjustable pressure relief, 35-241 bar (500-3500 psi), mounts directly to G3 pump, requires cable with Deutsch connector—see 24N402 - BSPP
24M483	G3 Standard Pump Vent Valve Kit—Normally Open, 115 VAC, adjustable pressure relief, 35-241 bar (500-3500 psi), mounts directly to G3 pump, requires cable with DIN connector—see 123358 - BSPP
24M484	G3 Standard Pump Vent Valve Kit—Normally Open, 230 VAC, adjustable pressure relief, 35-241 bar (500-3500 psi), mounts directly to G3 pump, requires cable with DIN connector—see 123358 - BSPP



24M480

Pressure Reliefs Kits

571028	Adjustable Return-to-Reservoir Pressure Relief Kit – 35-241 bar (500-3500 psi) - 1/4" NPT in/outlet
571071	Adjustable Return-to-Reservoir Pressure Relief Kit – 35-241 bar (500-3500 psi) - 1/4" BSPP in/outlet
571058	Pressure Relief-to-Atmosphere Kit - 1/4" NPT outlet – requires one of the following six pressure relief valves
571070	Pressure Relief-to-Atmosphere Kit - 1/4" BSPP outlet – requires one of the following six pressure relief valves



571028 / 571071



571058 / 571070

Pressure Relief Valve required for 571058 / 571070

563156	Pressure Relief Valve - 52 bar, 750 psi
563157	Pressure Relief Valve - 69 bar, 1000 psi
563158	Pressure Relief Valve - 103 bar, 1500 psi
563159	Pressure Relief Valve - 138 bar, 2000 psi
563160	Pressure Relief Valve - 172 bar, 2500 psi
563161	Pressure Relief Valve - 207 bar, 3000 psi

Reservoirs

571042	repair kit 2L reservoir with wiper arm
571069	repair kit 2L reservoir with follower plate
571155	repair kit 4L reservoir with low level
571156	repair kit 8L reservoir with low level
571157	repair kit 12L reservoir with low level
571158	repair kit 16L reservoir with low level

Generic

571041	G3 Pump Element – the same adjustability as the pump included with G3
571036	Protective front cover kit
124300	Accessory Cable – 4,88 m (16 ft) male M12 connector on one end and flying leads on the other end
124333	Accessory Cable – 4,88 m (16 ft) male M12 connector on one end and female M12 connector on the other end
124640	Alarm Output Accessory Cable – DIN connector to flying leads, 2 m (6.5 ft)
124301	M12 Female Connector – 6-8 mm cable
124594	M12 Male Connector – 6-8 mm cable
124595	M12 Male Connector – 8-11 mm cable
563485	Electronic Proximity Switch – 12 VDC, 24 VDC or 90-249 VAC. Use to read movement and provide feedback of piston in series progressive divider valve. Includes five foot cable installed into switch with flying leads. Requires purchase of 124594.
563501	Electronic Proximity Switch with LED–24 VDC or 90-240 VAC. Use to read movement and provide feedback and provide feedback in piston of divider valve. Requires purchase of a cable with M12 female connection.
557829	Electronic Pressure Switch–Use to read pressure in an injector-based system. After injectors dispense, G3 will trigger pump shut down and vent. Includes five foot cable installed into switch with flying leads. Requires purchase of 124595.
557874	High capacity fill zerk with quick disconnect
121474	Female disconnecter
247886	Manual Fill Pump – Fits 22 Liter (5 gallon) or 16 Kilo (35 pound) pail
571162	Manual Hand Pump – Use with grease cartridges, installs into alternative pump element port. Not recommended for pumps with follower plates.
571064	Cold Temperature Fill Relief Kit – Prevents over pressurizing when filling in cold temperatures
571030	Remote Manual Run/Monitoring Light - 12 VDC
571032	Remote Manual Run/Monitoring Light Kit – 12 VDC, includes 4,88 m (16 ft) M12 cable
571031	Remote Manual Run/Monitoring Light–24 VDC, 90-240 VAC
571033	Remote Manual Monitoring Light Run Kit–24 VDC, 90-240 VAC, includes 4,88 m (16 ft) M12 cable
24K415	Cycle Indicating Proximity Switch–Designed to work with Graco's USP™, MSP™, and MHH™ series progressive divider valves. Requires purchase of a cable with M12 female connection.
24K414	Pressure Switch–Provides the pressure sensing required for GL32™ and GL43™ Injector Systems. Requires purchase of a cable with M12 female connection.



571033



247886



24K415



24K414



571162



571064



557829
(124595 shown)



557874



121474



563485



124594



124301

124640



124333



124300



571041



571036