

Dyna-Star® HP and HF 24 VDC Pumps and Accessories

Tech Sheet



Features and Benefits

Safely Move Pump

Built-in lift ring is rated to 500 lbs (226 kg)

Graco Advantage Drive™

High quality helical hardened steel gears are lubricated for life and sealed to keep contaminants out for longer lasting performance. Field-proven for over ten years to be the longest lasting drive in the industry.

Direct Mount Electric Vent Valve

Mounts directly to pump with no special brackets or hoses for a compact design and less parts to break or wear out. Deutsch connector is IP69K rated to keep out moisture. Built-in pressure relief for safety and compact, efficient installations.

Adjustable Motor Control

Ability to adjust motor controls for power input, motor speed, current control and signal input to perfectly match the pump to your application and environmental changes.

Cavitation-free Fill and Vent Path – Tube-in-Tube

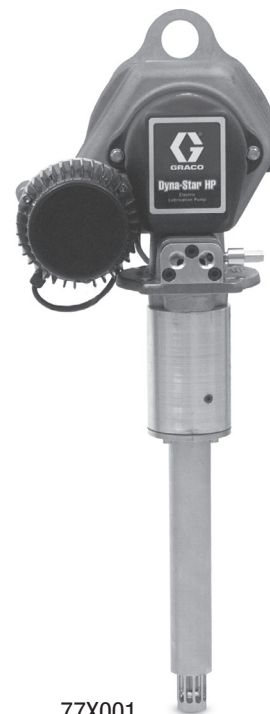
Provides simple and direct venting and filling to the foot of the pump. No cavitation due to improper filling and venting with no external vent hoses or extra internal pipes. Convert a standard drum to an injector pump station in minutes.

Auto Fill Shut Off and Remote Fill Port Manifold

Avoid over- or under-filling with this cost-effective mechanical solution. Visual indication of a full reservoir or connect to proximity switch for electronic signal. The Remote Mounted Fill Port Manifold ensures clean and efficient refills.

AC to DC Converter Box

Convenience of AC power while maintaining DC speed and amp control. Eliminates expensive pneumatic and hydraulic power requirements.



77X001

Typical Applications

- Mining Operations
- Milling and Crushing
- Heavy-duty Construction
- Well Services
- Industrial

Technical Specifications

Maximum Lubricant Outlet Pressure	
HF Models	3500 psi (24.1 MPa, 241 bar)
HP Models	5000 psi (34.47 MPa, 344 bar)
Electrical Requirements	
All Models	24 VDC
Input Voltage Range	
24 VDC	18 to 32 VDC
Flow Rate Range	
HF Models	1.5 in ³ - 25 in ³ /minute (24.6 cm ³ - 410 cm ³ /minute)
HP Models	1.5 in ³ - 18 in ³ /minute (24.6 cm ³ - 295 cm ³ /minute)
Inlet/Outlet Sizes	
Tank/Reservoir Fill Port	1/2 in npt
Overflow Port	1/2 in npt
Fluid Outlet Size	3/8 in npt
Operating Temperature	
HF Models	14° to 149° F (-10° to 65° C)
HP Models	-40° to 149° F (-40° to 65° C)
Audible Sound Pressure	
71 dB(A)	

Product Manuals: Pumps 332514, Pump Systems 332540, Auto Fill Shut Off 332518, Low Level 332515, Electric Vent Valve 332519, Drum Covers and Follower Plates 312738, Inline Filter 333113, AC to DC Converter 333391, Remote Fill Port Manifold 333393



77X102

North America Customer Service **800-533-9655** Fax **800-533-9656**

www.graco.com

©2014 Graco Inc. • P.O. Box 1441 • Minneapolis, MN 55440-1441 • 341047 Rev F • 8/14 • Printed in U.S.A.

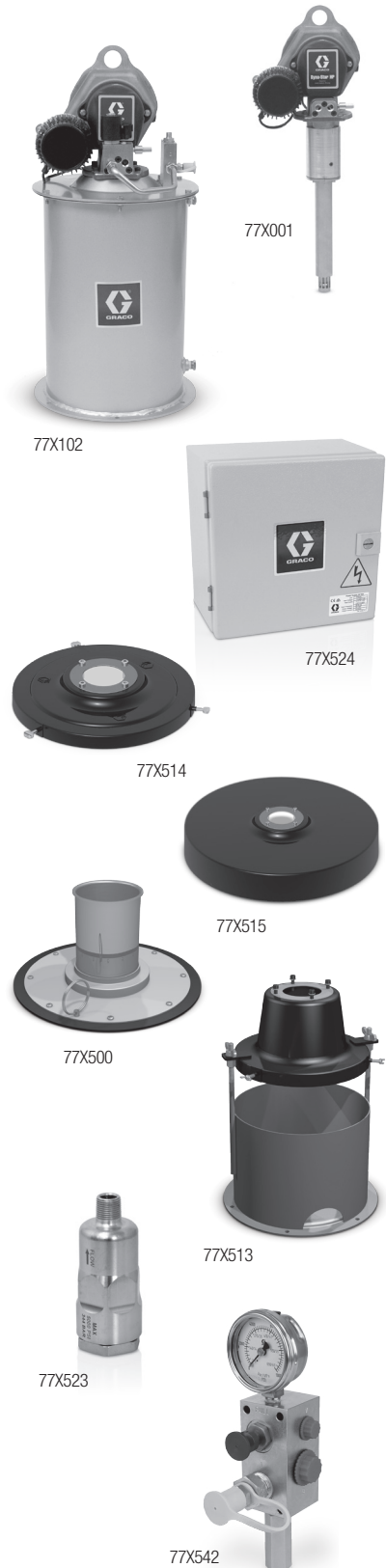
All written and visual data contained in this document are based on the latest product information available at the time of publication. Graco reserves the right to make changes at any time without notice.

Dyna-Star® HP and HF 24 VDC Pumps and Accessories

Ordering Information



Stand Alone Pumps	
77X000	24 VDC HP Stand Alone Pump for 35 or 60 pound reservoir
77X001	24 VDC HP Stand Alone Pump Stand Alone Pump with Tube-in-Tube for 35 or 60 pound reservoir
77X002	24 VDC HP Stand Alone Pump Stand Alone Pump with Tube-in-Tube for 90 or 120 pound reservoir
77X003	24 VDC HP Stand Alone Pump Stand Alone Pump with Tube-in-Tube for 400 pound reservoir
77X014	24 VDC HF Stand Alone Pump for 35 or 60 pound reservoir
77X015	24 VDC HF Stand Alone Pump for 120 pound reservoir
77X016	24 VDC HF Stand Alone Pump for 400 pound reservoir
Custom Tank Injector Kits	
77X011	24 VDC HP Pump and Vent Valve with Tube-in-Tube for 35 or 60 pound reservoir
77X012	24 VDC HP Pump and Vent Valve with Tube-in-Tube for 90 or 120 pound reservoir
77X013	24 VDC HP Pump and Vent Valve with Tube-in-Tube for 400 pound reservoir
Injector Pump Modules	
77X100	24 VDC HP Injector Module with Pump, Tube-in-Tube, Vent Valve, Cover, Tank and Dip Stick for 60 pound reservoir
77X101	24 VDC HP Injector Module with Pump, Tube-in-Tube, Vent Valve, Cover, Tank and Dip Stick for 90 pound reservoir
77X102	24 VDC HP Injector Module with Pump, Tube-in-Tube, Vent Valve, Cover, Tank and Auto Fill Shut Off for 60 pound reservoir
77X103	24 VDC HP Injector Module with Pump, Tube-in-Tube, Vent Valve, Cover, Tank and Auto Fill Shut Off for 90 pound reservoir
77X104	24 VDC HP Injector Module with Pump, Tube-in-Tube, Vent Valve, Follower Plate, Low Level Kit, Cover, Tank for 60 pound reservoir
77X105	24 VDC HP Injector Module with Pump, Tube-in-Tube, Vent Valve, Follower Plate, Low Level Kit, Cover, Tank for 90 pound reservoir
Standard Drum Injector Kits	
77X111	24 VDC HP Pump, Vent Valve and Cover with Tube-in-Tube for 120 pound reservoir
77X112	24 VDC HP Pump, Vent Valve and Cover with Tube-in-Tube for 400 pound reservoir
Standard Drum Kits	
77X121	24 VDC HF Pump and Cover for 120 pound reservoir
77X122	24 VDC HF Pump and Cover for 400 pound reservoir
Accessories	
77X500	Follower Plate for Graco 60 pound and 90 pound Graco Tank for Tube-in-Tube
77X510	Follower Plate for 35 pound Bucket with and without Tube-in-Tube
247701	Follower Plate for 120 pound Drum without Tube-in-Tube
77X511	Follower Plate for 120 pound Drum with Tube-in-Tube
247702	Follower Plate for 400 pound Drum without Tube-in-Tube
77X512	Follower Plate for 400 pound Drum with for Tube-in-Tube
77X513	Cover, Cylinder, Tie-Rods and Base to Convert 60 pound Length to 35 pound Bucket
77X514	Cover for 120 pound Drum
77X515	Cover for 400 pound Drum
77X521	Auto Fill Shut Off (AFSO) - Diaphragm, Plate, Valve, Coupler and Pipes
77X522	Low Level Kit Sight Glass, Electric Low Level Switch and Cable (requires Follower Plate 77X500)
77X523	400 Micron Inline Filter, Maximum 5000 psi (344 bar) Inlet Pressure
77X524	110-230 VAC to 24 VDC Converter Box
77X527	Power Cable for Series Progressive System (use with 77X528)
77X528	Extension Power Cable for Both 77X527 and 77X529 - 15 feet (4.6 meters)
77X529	Power Cable for Injector System (use with 77X528)
77X540	24 VDC Electric Vent Valve with Pressure Relief
77X541	Filter Replacement Kit - use with 77X523
77X542	Remote Fill Port Manifold with Vent
77X543	HF Manifold with 4,000 psi Pressure Relief
77X544	HP Manifold with 5,000 psi Pressure Relief
115124	Pressure Switch - pressure adjustment visible in window
24N181	Pressure Switch



North America Customer Service 800-533-9655 Fax 800-533-9656

www.graco.com

©2014 Graco Inc. • P.O. Box 1441 • Minneapolis, MN 55440-1441 • 341047 Rev F • 8/14 • Printed in U.S.A.

All written and visual data contained in this document are based on the latest product information available at the time of publication. Graco reserves the right to make changes at any time without notice.