

4.10

Flow control valve

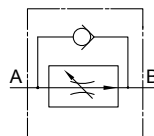
Type MSA30

Size 30
Up to 210 bar
Up to 300 L/min



Contents

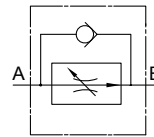
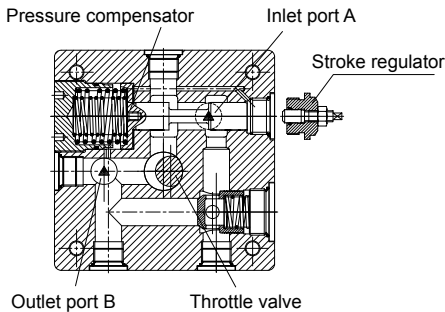
Function and configuration	02
Ordering code	02
Technical data	02
Unit dimensions	03



Symbol of flow control valve,
type MSA

Function and configuration

Flow control valve type MSA is two-way flow control valve, consist of pressure compensator and throttle valve in series. When fluid flows into the valve, it is reduced of pressure first and then throttled. The flow in the flow control valve is able to maintains reliable working rate independent of any impact from the changing load because of pressure compensation function provided from pressure compensator. Flow-rate is adjusted by the handle regulator within a range of 120o. When appropriate flow is adjusted, the handle regulator can be locked via pinch knob while the value is shown on the scale. The pressure relief valve can be with or without stroke regulator.



Symbol of flow control valve,
type MSA

Ordering code

MSA	30	E	P				*
Flow control valve							Further details in clear text
Nominal size	= 30						No code = NBR seals V = FKM seals
160 L/min	=160						No code = Pressure compensator, without stroke regulator
250 L/min	=250						B = Pressure compensator, with stroke regulator
300 L/min	=300						
							Flow (A → B)

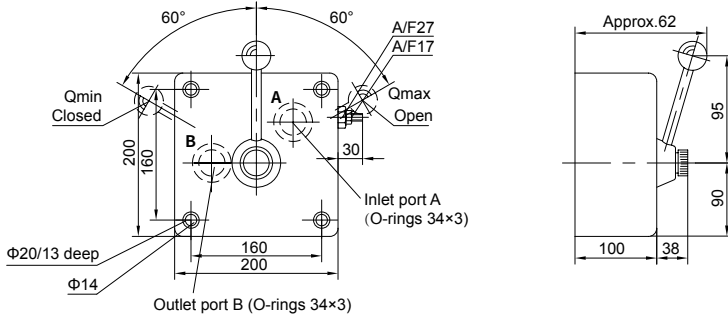
Technical data

Fluid		Mineral oil, Phosphate ester
Fluid temperature range	°C	-20~+80
Viscosity range	mm ² /s	10~800
Viscosity range	mm ² /s	Maximum permissible degree of fluid contamination: Class 9. NAS 1638 or 20/18/15, ISO4406
Operating pressure	bar	210
Max. Pressure differential (concerned with Q max)	bar	5~10
Flow adjustment		Unconcerned with pressure
Weight	kg	Approx.33

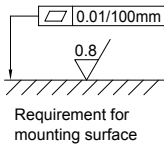
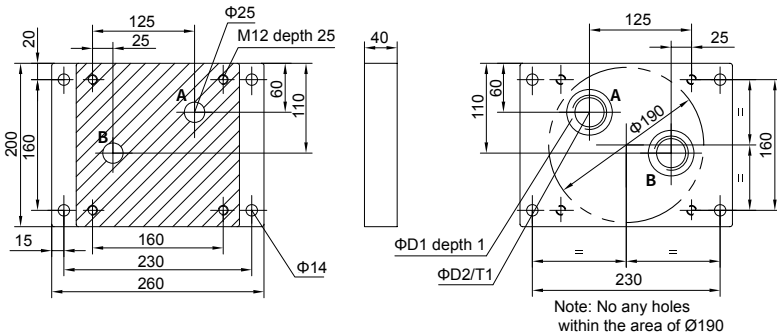
Unit dimensions:

(Dimensions in mm)

• **Outline dimension of flow control valve type MSA**



• **Sub-plate dimensions of flow control valve, type MSA**



Size	type	D1	D2	T1	Valve fixing screws	Torque (Nm)
30	G138/1	56	G1 1/4	21	4pcs M12×110	75
	G139/1	61	G1 1/2	23	GB/T70.1-10.9	

China

+86 400 101 8889

America

+01 630 995 3674

Germany

+49 172 3683463

Japan

+81 03 6809 1696



© This brochure can be reproduced, edited, reproduced or transmitted electronically without the authorization of Hengli Hydraulic Company. Due to the continuous development of the product, the information in this brochure is not specific to the specific conditions or applicability of the industry, thus, Hengli does not take any responsibility for any incomplete or inaccurate description.