



7.10

Connection flange

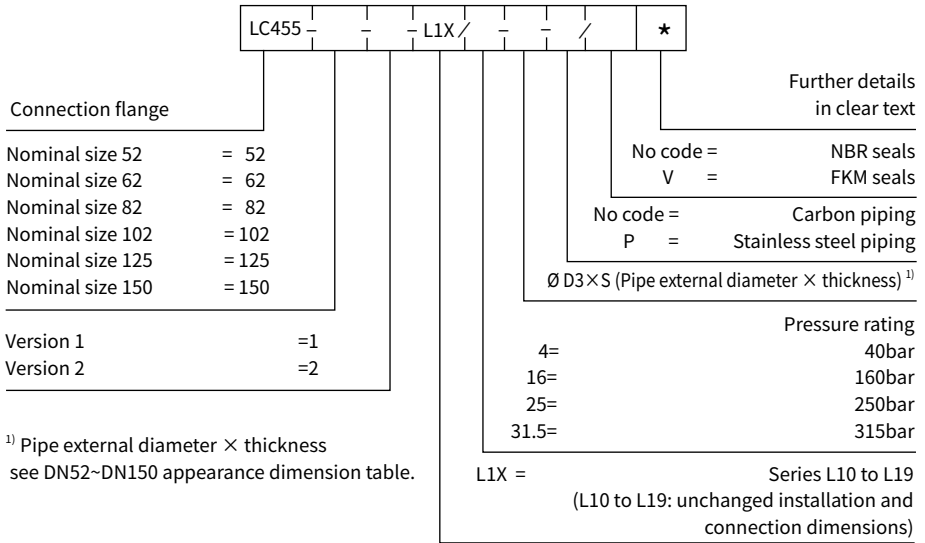
Type LC455...L1X

Sizes 52 to 150
Up to 4, 16, 25 and 315bar

Contents

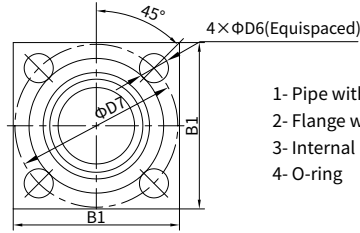
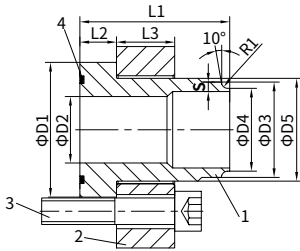
Ordering code	02
Appearance structure of connection flange - type LC455...L1X (Size 52 to 102)	03
Dimensions of connection flange - type LC455...L1X (Size 52 to 102)	04-05
Appearance structure of connection flange - type LC455...L1X (DN125 and DN150)	06
Dimensions of connection flange - type LC455...L1X (Size125 and size150)	07

Ordering code



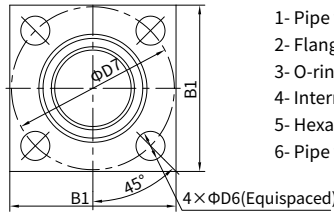
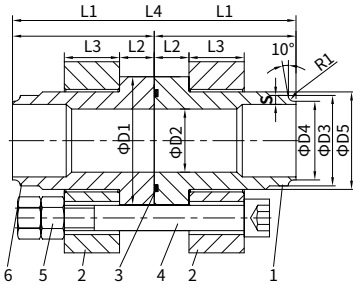
Appearance structure of connection flange

• Version 1 of connection flange type LC455...L1X (Size 52 to 102)



- 1- Pipe with groove
- 2- Flange with clamp plate
- 3- Internal hexagon screw
- 4- O-ring

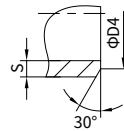
• Version 2 of connection flange type LC455...L1X (Size 52 to 102)



- 1- Pipe with groove
- 2- Flange with clamp plate
- 3- O-ring
- 4- Internal hexagon screw
- 5- Hexagon nut
- 6- Pipe without groove

DN52~DN102, pressure rating is 40bar;
 DN52~DN62, pressure rating is 160bar;
 DN52, pressure rating is 250bar and 315bar.

Note: Welded pipe nipple structure of sizes see right chart.



Dimensions of connection flange

·Type LC455...L1X (Size 52 to 102)

Pressure rating	up to 40bar				up to 160bar				
	DN52	DN62	DN82	DN102	DN52	DN62	DN82	DN102	
Size									
B1	100	120	150	180	100	120	150	180	
D1	81	97	118	142	81	97	118	142	
D2	42	51	73	86	41	51	73	86	
D3	60	76	89	114	60	76	102	114	
S	4	5	5	6	5	6	8	9	
D4	54	68	82	106	53	66	89	100	
D5	60	76	102	114	60	76	102	114	
D6	17	21	25	33	17	21	25	33	
D7	98	118	145	175	98	118	145	175	
L1	90	110	130	160	90	110	130	160	
L2	22	26	30	35	22	26	30	35	
L3	35	45	55	65	35	45	55	65	
L4	180	220	260	320	180	220	260	320	
R1	-	-	-	-	-	-	5	5	
O-ring GB/ T3452.1	50×5.3	60×5.3	80×5.3	95×5.3	50×5.3	60×5.3	80×5.3	95×5.3	
Screw of version 1 GB/T70.1	M16×80	M20×100	M24×120	M30×140	M16×80	M20×100	M24×120	M30×140	
	-8.8 210Nm	-8.8 430Nm	-8.8 730Nm	-8.8 1450Nm	-10.9 210Nm	-10.9 430Nm	-10.9 730Nm	-10.9 1450Nm	
Screw of version 2 GB/T70.1	M16×150	M20×180	M24×210	M30×250	M16×140	M20×180	M24×220	M30×260	
	-8.8 210Nm	-8.8 430Nm	-8.8 730Nm	-8.8 1450Nm	-10.9 210Nm	-10.9 430Nm	-10.9 730Nm	-10.9 1450Nm	
Nut of version 2 GB/T6170	M16-8	M20-8	M24-8	M30-8	M16-10	M20-10	M24-10	M30-10	
Weight kg	version 1	3.64	6.54	11.42	20.43	3.66	6.57	11.85	20.56
	version 2	7.3	13.55	21.14	40.46	7.44	13.61	22.01	40.72

Dimensions of connection flange

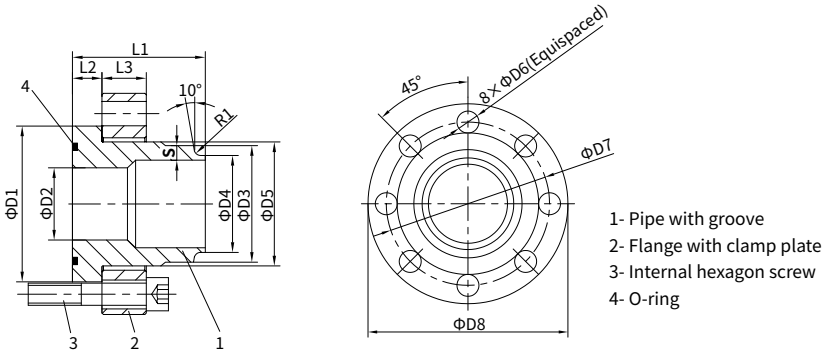
·Type LC455...L1X (Size 52 to 102)

Pressure rating	up to 250bar				up to 315bar				
Size	DN52	DN62	DN82	DN102	DN52	DN62	DN82	DN102	
B1	100	120	150	180	100	120	150	180	
D1	81	97	118	142	81	97	118	142	
D2	39	51	69	77	39	51	69	77	
D3	60	76	102	114	60	76	102	114	
S	8	10	12	14	10	12	16	18	
D4	47	60	81	90	43	55	74	82	
D5	60	76	102	114	60	76	102	114	
D6	17	21	25	33	17	21	25	33	
D7	98	118	145	175	98	118	145	175	
L1	90	110	130	160	90	110	130	160	
L2	22	26	30	35	22	26	30	35	
L3	35	45	55	65	35	45	55	65	
L4	180	220	260	320	180	220	260	320	
R1	-	5	5	5	-	5	5	5	
O-ring GB/T3452.1	50×5.3	60×5.3	80×5.3	95×5.3	50×5.3	60×5.3	80×5.3	95×5.3	
Screw of version 1 GB/T70.1	M16×80 -10.9 210Nm	M20×100 -10.9 430Nm	M24×120 -10.9 730Nm	M30×140 -10.9 1450Nm	M16×80 -10.9 210Nm	M20×100 -10.9 430Nm	M24×120 -10.9 730Nm	M30×140 -10.9 1450Nm	
Screw of version 2 GB/T70.1	M16×140 -10.9 210Nm	M20×180 -10.9 430Nm	M24×210 -10.9 730Nm	M30×250 -10.9 1450Nm	M16×140 -10.9 210Nm	M20×180 -10.9 430Nm	M24×220 -10.9 730Nm	M30×250 -10.9 1450Nm	
Nut of version 2 GB/T6170	M16-10	M20-10	M24-10	M30-10	M16-10	M20-10	M24-10	M30-10	
Weight kg	version 1	3.83	6.64	12.38	22.01	3.89	6.68	12.5	22.13
	version 2	7.85	13.72	23.07	43.62	7.85	13.83	23.31	43.86

07

Appearance structure of connection flange

• Version 1 of connection flange type LC455...L1X (DN125 and DN150)



• Version 2 of connection flange type LC455...L1X (DN125 and DN150)

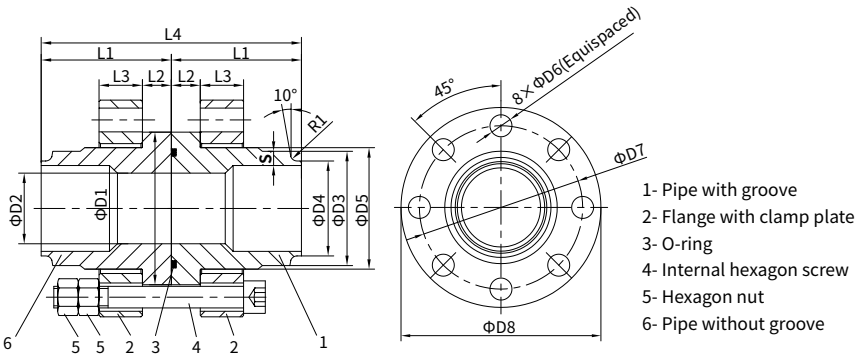
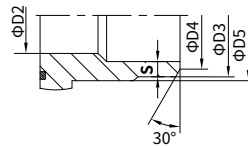


Illustration:

For DN125 and DN150's, the pressure rating is 40bar, and its pipe $\Phi D2$ and $\Phi D3$ with groove, pipe thickness S and angle, see right picture.



Dimensions of connection flange

·Type LC455...L1X (Size125 and Size150)

Pressure rating	up to 40bar		up to 160bar		up to 250bar		up to 315bar		
Size	DN125	DN150	DN125	DN150	DN125	DN150	DN125	DN150	
D1	211	250	211	250	211	250	211	250	
D2	119	150	119	140	117	133	117	133	
S	6	7	10	11	18	25	25	30	
D3	140	168	140	168	168	194	168	194	
D4	131	158	124	151	136	148	123	138	
D5	168	194	168	194	168	194	168	194	
D6	33	40	33	40	33	40	33	40	
D7	245	290	245	290	245	290	245	290	
D8	300	355	300	355	300	355	300	355	
L1	180	180	180	180	180	180	180	180	
L2	40	50	45	50	40	50	45	50	
L3	60	70	60	70	60	70	60	70	
L4	360	360	360	360	360	360	360	360	
R1	-	-	5	5	5	5	5	5	
O-ring GB/T3452.1	150×5.3	170×5.3	150×5.3	170×5.3	132×5.3	165×5.3	132×5.3	165×5.3	
Screw of version 1 GB/T70.1	M30×160 - 8.8 1450Nm	M36×180 - 8.8 2360Nm	M30×165 -10.9 1450Nm	M36×180 -10.9 2360Nm	M30×160 -10.9 1450Nm	M36×180 - 10.9 2360Nm	M30×165 -10.9 1450Nm	M36×180 -10.9 2360Nm	
Screw of version 2 GB/T70.1	M30×260 -8.8 1450Nm	M36×310 - 8.8 2360Nm	M30×260 -10.9 1450Nm	M36×310 -10.9 2360Nm	M30×260 -10.9 1450Nm	M36×310 -10.9 2360Nm	M30×260 -10.9 1450Nm	M36×310 -10.9 2360Nm	
Nut of version 2 GB/T6170	M30-8	M36-8	M30-10	M36-10	M30-10	M36-10	M30-10	M36-10	
Weight kg	version 1	46.05	69.31	47.03	72.4	49.98	77.06	50.83	77.29
	version 2	88.02	138.18	89.82	144.36	95.71	153.67	97.43	154

07

China

+86 400 101 8889

America

+01 630 995 3674

Germany

+49 172 3683463

Japan

+81 03 6809 1696



© This brochure can be reproduced, edited, reproduced or transmitted electronically without the authorization of Hengli Hydraulic Company. Due to the continuous development of the product, the information in this brochure is not specific to the specific conditions or applicability of the industry, thus, Hengli does not take any responsibility for any incomplete or inaccurate description.