



8.4

Pressure gauge isolator valve

Type AF 6...L3X

Size 6
up to 315 bar



Contents

| | |
|----------------------------|----|
| Function and configuration | 02 |
| Installation examples | 02 |
| Specification | 03 |
| Technical data | 03 |
| Unit dimensions | 04 |

Features

- 3-way spool valve
- For sub-plate mounting
- For threaded connections
- Push button operated

Function and configuration

Pressure gauge isolator valves type AF 6 are 3-way spool valves for manual operation.

They serve to monitor the prevailing operating pressure.

The valves basically consist of housing (1), spool (2), compress spring (3), push button (4) .

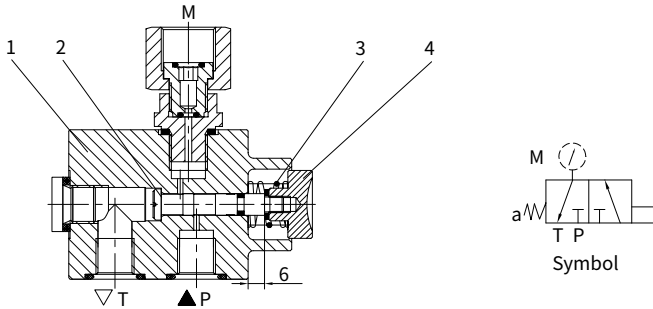
It has two switched positions as well as spring return to the initial position.

In the initial position, flow from P to the pressure gauge via the spool (2) is blocked and the pressure gauge is connected with channel T.

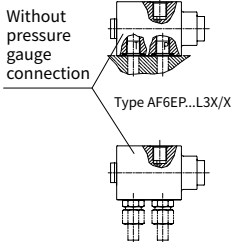
When the button (4) is pushed, the spool (2) , is moved into the switched position, giving free flow from P to the pressure gauge and the connection to T is blocked. After operation, the spool (2) is pushed back into the initial position by the compress spring (3) and thereby unloads the pressure gauge.

The valve is available for sub-plate mounting or threaded connections.

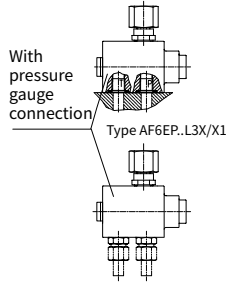
The pressure gauge can be directly screwed in to the valve housing or fitted separately (see installation examples).



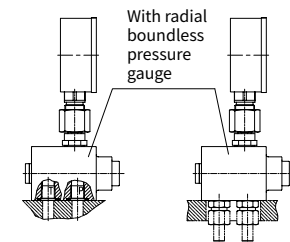
Installation examples



Type AF6EA...L3X/X



Type AF6EA...L3X/X1



Type AF6EP...L3X/Y

Type AF6EA...L3X/Y

Specification

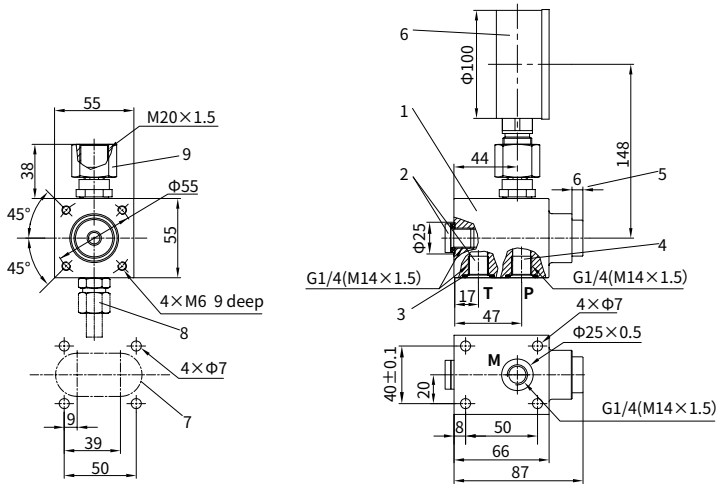
| | | | | | | | | | |
|---|------|---|---|---|-------|---|--|---|---|
| | A | F | 6 | E | -L3X/ | / | | * | |
| Isolator valve | = A | | | | | | | | Further details in clear text |
| Spring return | = F | | | | | | | | No code= NBR seals V= FKM seals |
| Nominal size 6 | =6 | | | | | | | | Connection thread: No code = Inch threaded 2 = Metric threaded |
| Single valve | = E | | | | | | | | |
| For threaded connections | = A | | | | | | | | |
| For sub-plate mounting | = P | | | | | | | | |
| Series L30 to L39 (L30 to L39: unchanged installation and connection dimensions) | =L3X | | | | | | | | Pressure gauge measuring range(only for version Y 6 = Indication range up to 60bar (allowable max. operating pressure 40bar) 10= Indication range up to 100bar (allowable max. operating pressure 63bar) 16= Indication range up to 160bar (allowable max. operating pressure 100bar) 25= Indication range up to 250bar (allowable max. operating pressure 160bar) 40= Indication range up to 400bar (allowable max. operating pressure 315bar) |
| Without pressure gauge connection | =X | | | | | | | | |
| With pressure gauge connection | =X1 | | | | | | | | |
| With radial boundless pressure gauge | =Y | | | | | | | | |

Technical data

| | | |
|-----------------------------------|--------------------|---|
| Fluid | | Mineral oil, Phosphate ester |
| Fluid temperature range | °C | -30 to +80 (NBR seal) -20 to +80 (FKM seal) |
| Viscosity range | mm ² /s | 2.8 to 380 |
| Degree of contamination | | Maximum permissible degree of fluid contamination: Class 9. NAS 1638 or 20/18/15, ISO4406 |
| Max.operating pressure | bar | 315 |
| Indicatingrange of pressure gauge | bar | 60, 100, 160, 250, 400 the indicating range should be approx. 30 % above the max.operating pressure |
| Weight | kg | 1.4 |

Unit dimensions

(Dimensions in mm)



- 1 Pressure gauge isolator valve
- 2 Tank port, optional
- 3 O-ring 20×2.65 (for plate-type connection)
- 4 Pressure port (pump)
- 5 Push button, stroke 6 mm
- 6 Pressure gauge diameter 100mm
- 7 Panel cut-out
- 8 Connectors(out of the supplying scop)
- 9 Pressure connections

