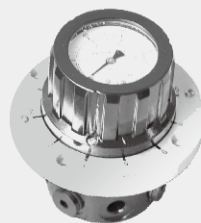


8.5

Six-circuit gauge isolator

Type MS2...L2X

Pressure up to 315 bar



Contents

Function and configuration, symbol	02
Specification	02
Technical data	03
Outline and connection dimension	03
Installation notes	03

Function and configuration

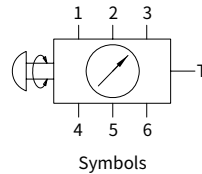
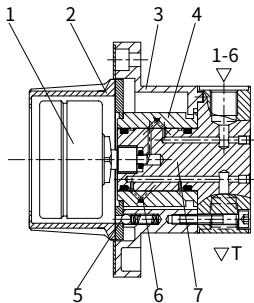
Six-circuit gauge isolators type MS are rotary spool valves. They offer the possibility of selecting measuring points within a hydraulic system, and checking the operating pressure at six points using only one pressure gauge. The test connections are arranged around the circumference of the housing (7).

Inside the rotary knob (2) of isolator, a damped pressure gauge (1) fitted. By turning the rotary knob (2) and the sleeve (4) until the indicator on the rotary knob (2) points to one of the

6 measuring points, this measuring point is connected to the pressure gauge (1).

In order to unload the pressure gauge (1) there are unloading points between each two measuring points. In this way the pressure gauge (1) is connected to the tank port T via the angling hole (6) in sleeve (4).

A built-in detent (5) holds any selected position, it is indicated by the arrow which is situated on the rim of the rotary knob.



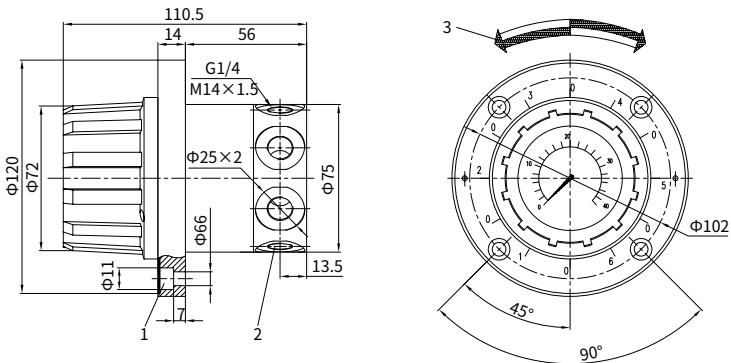
Specification

MS	2	A	-L2X	/	/	*
Multi-circuit gauge isolator						Further details in clear text
With built-in pressure gauge (6 measuring connections)					No code =	Inch threaded G1/4
Threaded connection =A					2 =	Metric threaded M14×1.5
Series L20 to L29 (L20 to L29: unchanged installation and connection dimensions)		=L2X			No code =	NBR seals
					V =	FKM seals
				4 =		Indication range up to 60bar (allowable max. operating pressure 25bar)
				10 =		Indication range up to 100bar (allowable max. operating pressure 63bar)
				16 =		Indication range up to 160bar (allowable max. operating pressure 100bar)
				25 =		Indication range up to 250bar (allowable max. operating pressure 160bar)
				40 =		Indication range up to 400bar (allowable max. operating pressure 315bar)

Technical data

Allowed max. operating pressure	bar	315
Back pressure on the tank connection, max.	bar	10
Fluid		Mineral oil, Phosphate ester
Fluid temperature range	°C	-30 to +80 (NBR seal) -20 to +80(FKM seal)
Viscosity range	mm ² /s	2.8 to 380
Degree of contamination		Maximum permissible degree of fluid contamination: Class 9. NAS 1638 or 20/18/15, ISO4406
Fitting position		Optional
Pressure threaded connection		M14×1.5 or G1/4
Weight	kg	1.9

Outline and connection dimension



- 1 4 fixing screw holes
- 2 6 measuring connections and 1 tank port are equally spaced around the circumference
- 3 Readings are obtained by turning the rotary knob clockwise or anti-clockwise .
Zero points are arranged between the indicating points

Installation notes

Considering the operating force, it is recommended that the pressures at diametrically opposite ports be approx. inbalance. Unused ports should be plugged.

China

+86 400 101 8889

America

+01 630 995 3674

Germany

+49 172 3683463

Japan

+81 03 6809 1696



© This brochure can be reproduced, edited, reproduced or transmitted electronically without the authorization of Hengli Hydraulic Company. Due to the continuous development of the product, the information in this brochure is not specific to the specific conditions or applicability of the industry, thus, Hengli does not take any responsibility for any incomplete or inaccurate description.