

## 501 Series Air Piloted Valve - 501A 501A31220

*Humphrey*

www.humphrey-products.com

The 501 Series Air Piloted Valve has an 1/2 pipe port and orifice size.

These valves feature the piston-poppet design which allows them to deliver higher flow in compact, lightweight design.

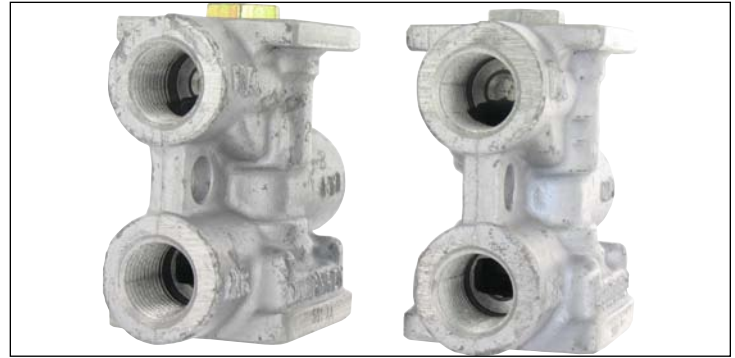
Single pilot 501A offer multi-purpose function. Normally closed, normally open, bi-pressure or directional.

Available in 2-, 3- and 4-way models.

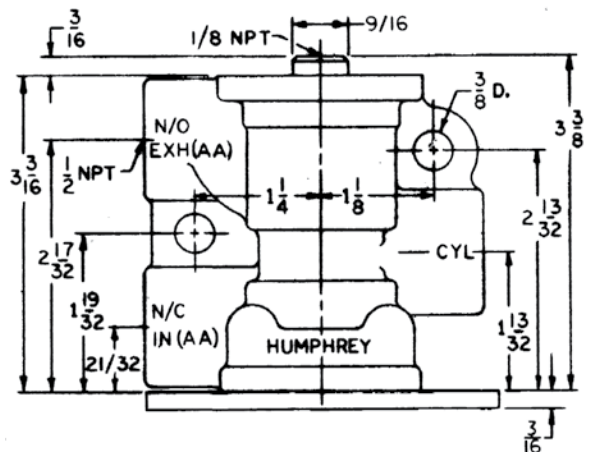
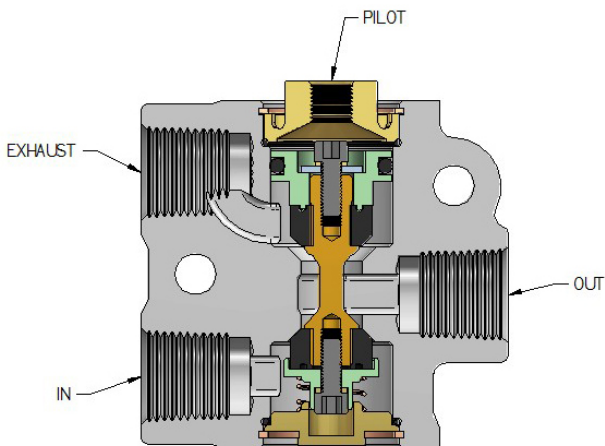
Available to use with air; consult factory for other media. For water-based media, brass bodies are available. Valves are also available when using glue.

Multi-purpose:

- Normally closed when supply pressure is connected to normally closed port.
- Normally open when supply pressure is connected to exhaust port.
- Directional when supply pressure is connected to normally open port.
- Bi-media when supply number one is connected to normally open port; supply number two when connected to normally closed port.
- All ports on same vertical plane for straight line plumbing.
- Light weight aluminum construction.



CFM @ 100 PSIG	220.0 CFM
Cv	3.5
Body Material	Cast Aluminum, Zinc Plated Steel, Stainless Steel
Air	Yes
Inert Gas	Yes
Min Pilot Pressure @ 100 PSIG	80 PSIG
Min Pilot Pressure @ 30 PSIG	30 PSIG
Min Pilot Pressure @ 60 PSIG	52
Pressure Range	0 - 125 PSIG
Filtration	Required
Lubrication	Not Required
Orifice Size	1/2 IN
Port Size	1/2 PIPE



### HOW TO ORDER HUMPHREY VALVES AND ACCESSORIES

- ☞ Go to [www.humphrey-products.com](http://www.humphrey-products.com)
- Select "Find A Distributor" and input your information to locate a distributor nearest you.
- Or, call Customer Service at 1-800-477-8707 for the name and phone number of your local distributor.

*Humphrey*

HUMPHREY PRODUCTS ARE SOLD WORLD-WIDE  
THROUGH AUTHORIZED DISTRIBUTORS

### HOW TO OBTAIN A 3D CAD DRAWING

- ☞ Go to [www.humphrey-products.com](http://www.humphrey-products.com)
- Using Internet Explorer 6.0 or later for Windows, select "Online Product Guide"
- Follow the steps to choose the valve you need.
- At "Product Overview" section, select "IE CAD VIEW" to download.

Information on this spec sheet is considered to proprietary to Humphrey. Specifications subject to change without notice. Please read WARNING and GENERAL GUIDELINES before using any Humphrey products.