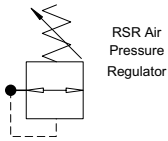


**TAC Auxiliary Devices complement TAC valves and TAC Operators in pneumatic logic design and solutions. Miniature and rugged, the line up is also used commonly by instrument and device makers as stand-alone items.**

**Available in 10-32 UNF ported or 1/8 PIPE port sizes.**

**Features and Benefits**

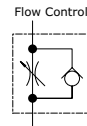
- Miniaturization. Small and compact.
- RSR self relieving regulator is designed for panel mounting, and achieves 22 CFM at 100 PSIG output pressure.
- SC1 flow control allows full flow on one direction and controlled return flow. Is unaffected by vibration, maintaining an accurate setting.
- Two sizes of check and shuttle valves (10-32 UNF & 1/8 PIPE).
- Model SQE can be used as shuttle or quick exhaust.



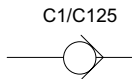
RSR Air Pressure Regulator



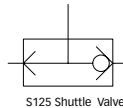
**RSR Air Pressure Regulator**



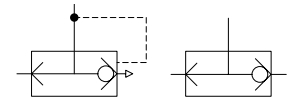
**SC1 Speed Control**



C1/C125



S125 Shuttle Valve



**C125 Check Valve**



**C1 Check Valve**



**S125 Shuttle Valve**



**SQE Shuttle and Quick Exhaust Valve**

**How To Order Valves & Manifolds...Page 112**

**HOW TO OBTAIN VALVE SPECIFICATIONS**

- Visit [www.humphrey-products.com](http://www.humphrey-products.com) and select "Online Product Guide."
- From the search options provided, choose the valve you want and the details for that product.
- Once completed, select "Spec Sheet" to create a PDF of the valve, which you may save and print at your convenience.

**HOW TO FIND A DISTRIBUTOR**

- Visit [www.humphrey-products.com](http://www.humphrey-products.com), select "Find A Distributor," and input your information to locate a distributor nearest you.
- Or, call Customer Service at 1-800-477-8707 for the name and phone number of your local distributor.

HUMPHREY PRODUCTS ARE SOLD WORLD-WIDE THROUGH AUTHORIZED DISTRIBUTORS *Humphrey*