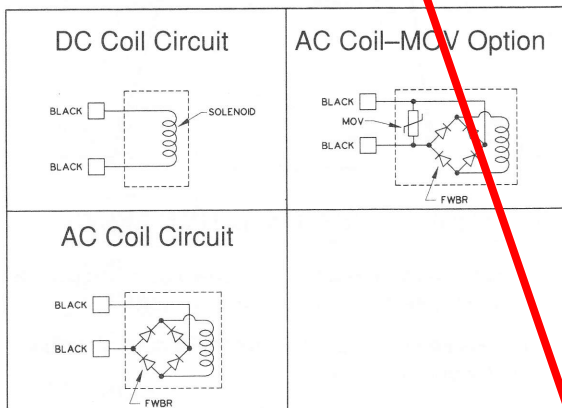


ELECTRICAL SPECIFICATION CHART

Voltage	Resistance (Ohms)	Current (Milliamps)
12VDC	36	333
24VDC	144	167
24VAC	100	200
100VAC	2100	44
120VAC	3025	36
200VAC	8400	22
240VAC	12100	18

- All coils are standard with 24-inch black lead wires. Optional 72-inch lead wires are available.
- All AC coils are rated for 50/60 Hertz.
- All coils conform to Class B insulation systems.
- Resistance and current are nominal values.
- Valve assemblies are "hi-pot" tested at 1750 VAC for one second.
- Ensure proper voltage supply per voltage label rating, +10%, -15% for AC or DC voltages.

SOLENOID CIRCUIT SCHEMATICS



METAL OXIDE VARISTOR, OPTION CODE MOV

All AC voltages can be ordered with Option Code MOV, a metal oxide varistor molded into the coil to protect against transient voltages of 300 volts or more. Option MOV protects the full wave bridge rectifier package from failure in the presence of voltage spikes.

Note: Option MOV is not available molded into the coil of valves with the DIN-type connector (Option -39). Consult factory for alternatives.

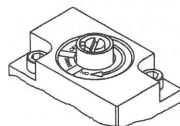
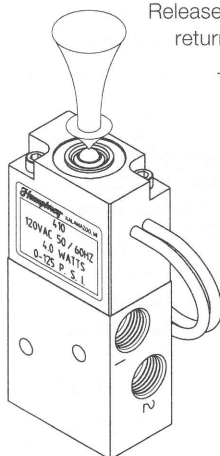
MANUAL OVERRIDE

Push button/spring return manual override is standard. Manual override is located on top of coil.

Push red button shifts armature which actuates valve's main stem. Release of manual force permits valve spring to return valve to normal position.

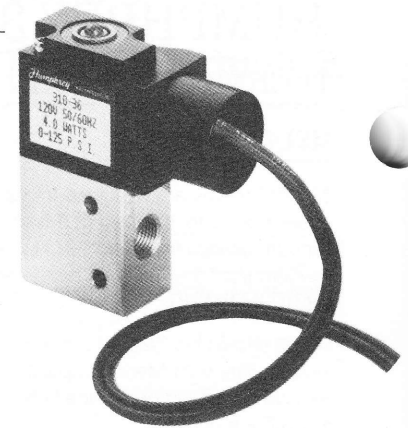
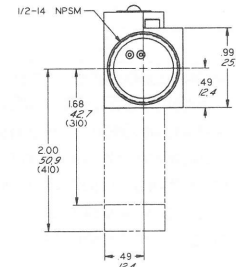
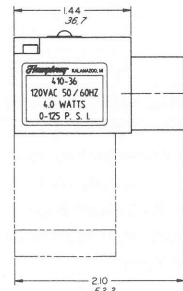
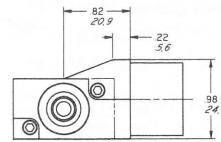
These valves are also available without manual override; specify Code 87 (example: 310-87 24VDC). On valves without manual override, a solid disk is installed on the coil. This replaces the punched disk which is used on valves with manual override.

A locking manual override is optional; specify Code 81 (example: 310-81 100VAC). To actuate valve, use screwdriver to turn override screw clockwise to "On" position. Valve remains actuated until screw is returned to "Off" position by turning counterclockwise.



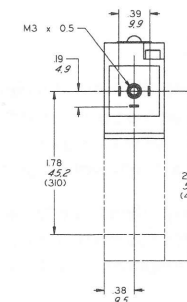
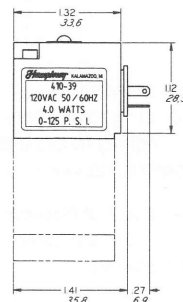
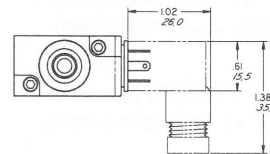
CONDUIT CONNECTOR

Conduit connector for closed wiring systems. Available on all in-line models. The connector option (Code 36) features a steel conduit insert molded into the valve coil. Order example: 310-36 24VDC.



CODE 39

Humphrey Code 39 is an optional plug-in DIN-type connector that conforms to international standards. It provides simplicity, convenience, and fast, easy electrical installation. Available for all 310/410 series valves, this connector accepts screw-in sockets, which form a secure solderless electrical connection.



SOCKETS (Order separately)

Model HS-2. This socket is available for all 310/410 series valves. Color is black.

Model HS-2L. This socket is available for valves with 12VDC and 24VDC. Has indicator light and is housed in clear plastic. Specify voltage when ordering.

