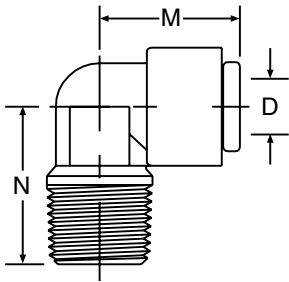


ME - Male Elbow

Tube-to-Pipe



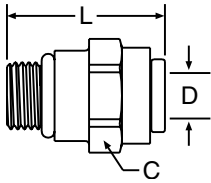
Gray Acetal EPDM Seal	White Polypropylene EPDM Seal	Natural Kynar Fluorocarbon Seal	Nom. Tube O.D.	NPTF Thread Size	M	N	D Thru Hole Min.
#	#	#					
A4ME2-MG	PP4ME2	F4ME2	1/4	1/8	0.84	0.94	.175
A4ME4-MG	PP4ME4	F4ME4	1/4	1/4	0.84	0.94	.175
A4ME6-MG	PP4ME6	F4ME6	1/4	3/8	0.84	1.04	.175
A5ME4-MG			5/16	1/4	1.03	1.08	.175
A5ME6-MG			5/16	3/8	1.03	1.06	.188
A6ME4-MG	PP6ME4	F6ME4	3/8	1/4	1.03	1.08	.250
A6ME6-MG	PP6ME6	F6ME6	3/8	3/8	1.03	1.06	.250

For nonstandard plastic collet, remove -MG suffix.



ST - Straight Thread

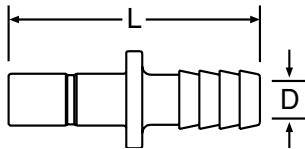
Tube-to-Male O-Ring Boss



Gray Acetal EPDM Seal	White Polypropylene EPDM Seal	Natural Kynar Fluorocarbon Seal	Nom. Tube O.D.	UNF-2B Thread Size	C Hex	L Overall Length	D Thru Hole Min.
#	#	#					
A6ST9-MG		F6ST9 (+)	3/8	9/16-18	13/16	1.39	.250

For nonstandard plastic collet, remove -MG suffix.

TCB - Tube-to-Barb Connector



Gray Acetal	White Polypropylene	Natural Kynar	Tube Stem O.D.	Tube I.D.	L Overall Length	D Thru Hole Min.
#	#	#				
A4TCB4	PP4TCB4	F4TCB4	1/4	1/4	1.67	.140
A6TCB4		F6TCB4	3/8	1/4	1.82	.140
A6TCB6	PP6TCB6	F6TCB6	3/8	3/8	1.98	.250
A8TCB6			1/2	3/8	2.10	.250
A8TCB8			1/2	1/2	2.10	.375

All sizes in inches

