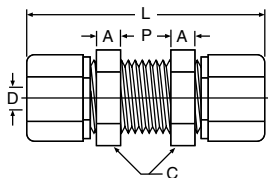


## BU - Bulkhead Union

Tube to tube

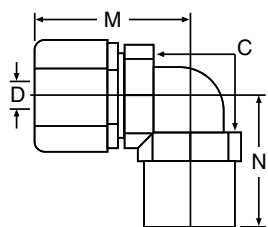


White Polypropylene Part Number	Black Polypropylene Part Number	White Nylon Part Number	Nom. Tube O.D.	A Ref.	C Hex	L Overall Length	P Max.	D Thru Hole Min.	Bulkhead Hole Drill Size
#	#	#							
W4BU4	P4BU4	N4BU4	1/4	1/4	13/16	2-11/64	3/8	.170	21/32
W5BU5 (+)	P5BU5	N5BU5	5/16	1/4	13/16	2-11/64	3/8	.187	21/32
W6BU6	P6BU6	N6BU6	3/8	9/32	15/16	2-39/64	1/2	.250	25/32
W8BU8	P8BU8	N8BU8	1/2	5/16	1-5/32	2-3/4	1/2	.375	31/32



## FE - Female Elbow

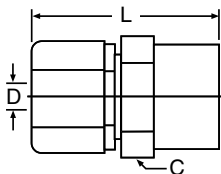
Tube to female pipe



White Polypropylene Part Number	Black Polypropylene Part Number	White Nylon Part Number	Nom. Tube O.D.	NPTF Thread Size	C Hex	M	N	D Thru Hole Min.
#	#	#						
W4FE2	P4FE2	N4FE2	1/4	1/8	11/16	1.10	0.84	.170
W4FE4	P4FE4	N4FE4	1/4	1/4	11/16	1.10	0.94	.170
W5FE2 (+)	P5FE2	N5FE2	5/16	1/8	11/16	1.10	0.84	.193
W6FE4	P6FE4	N6FE4	3/8	1/4	13/16	1.30	1.06	.250
W6FE6	P6FE6	N6FE6	3/8	3/8	13/16	1.30	1.03	.250
W8FE6 (+)	P8FE6	N8FE6	1/2	3/8	1	1.50	1.16	.375
W8FE8	P8FE8	N8FE8	1/2	1/2	1	1.50	1.27	.375
W10FE8 (+)	P10FE8	N10FE8	5/8	1/2	1-1/8	1.70	1.34	.500

## FC - Female Connector

Tube to female pipe



White Polypropylene Part Number	Black Polypropylene Part Number	White Nylon Part Number	Nom. Tube O.D.	NPTF Thread Size	C Hex	L Overall Length	D Thru Hole Min.
#	#	#					
W4FC2	P4FC2	N4FC2	1/4	1/8	11/16	1.30	.170
W4FC4	P4FC4	N4FC4	1/4	1/4	11/16	1.40	.170
W6FC4	P6FC4	N6FC4	3/8	1/4	1	1.57	.250
W6FC6	P6FC6	N6FC6	3/8	3/8	1-1/8	1.57	.250
W6FC8 (+)	P6FC8	N6FC8	3/8	1/2	1-1/8	1.67	.250
W8FC6	P8FC6	N8FC6	1/2	3/8	1	1.66	.375
W8FC8	P8FC8	N8FC8	1/2	1/2	1-1/8	1.78	.375
W10FC8 (+)	P10FC8	N10FC8	5/8	1/2	1-1/8	1.95	.500

(+) Non Standard. see page XX for information on non-standard products.