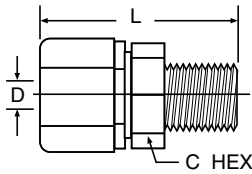


MC - Male Connector

Tube to male pipe

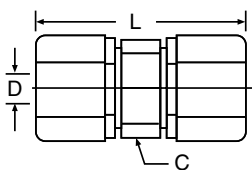


White Polypropylene Part Number	Black Polypropylene Part Number	White Nylon Part Number	Nom. Tube O.D.	NPTF Thread Size	C Hex	L Overall Length	D Thru Hole Min.
#	#	#					
W4MC2	P4MC2	N4MC2	1/4	1/8	11/16	1.38	.170
W4MC4	P4MC4	N4MC4	1/4	1/4	11/16	1.51	.170
W4MC6 (+)	P4MC6 (+)	N4MC6 (+)	1/4	3/8	11/16	.148	.170
W5MC2 (+)	P5MC2	N5MC2	5/16	1/8	11/16	1.38	.170
W5MC4 (+)	P5MC4	N5MC4	5/16	1/4	11/16	1.50	.250
W6MC2 (+)	P6MC2	N6MC2	3/8	1/8	13/16	1.50	.170
W6MC4	P6MC4	N6MC4	3/8	1/4	13/16	1.67	.250
W6MC6	P6MC6	N6MC6	3/8	3/8	13/16	1.67	.250
W6MC8 (+)	P6MC8	N6MC8	3/8	1/2	1	1.78	.250
W6MC12	P6MC12	N6MC12	3/8	3/4	1	1.84	.250
W8MC2 (+)	P8MC2	N8MC2	1/2	1/8	1	1.61	.170
W8MC4 (+)	P8MC4	N8MC4	1/2	1/4	1	1.74	.250
W8MC6	P8MC6	N8MC6	1/2	3/8	1	1.74	.375
W8MC8	P8MC8	N8MC8	1/2	1/2	1	1.87	.375
W8MC12 (+)	P8MC12	N8MC12	1/2	3/4	1	1.89	.375
W10MC2 (+)	P10MC2	N10MC2	5/8	1/8	1-18	1.75	.170
W10MC4 (+)	P10MC4	N10MC4	5/8	1/4	1-18	1.90	.250
W10MC6 (+)	P10MC6	N10MC6	5/8	3/8	1-18	1.90	.375
W10MC8 (+)	P10MC8	N10MC8	5/8	1/2	1-18	2.01	.500
W10MC12 (+)	P10MC12	N10MC12	5/8	3/4	1-18	2.04	.500



UC - Union Connector

Tube to tube



White Polypropylene Part Number	Black Polypropylene Part Number	White Nylon Part Number	Nom. Tube O.D.	C Hex	L Overall Length	D Thru Hole Min.
#	#	#				
W4UC4	P4UC4	N4UC4	1/4	11/16	1.62	.170
W5UC4 (+)	P5UC4	N5UC4	5/16-1/4	11/16	1.62	.170
W5UC5 (+)	P5UC5	N5UC5	5/16	11/16	1.62	.190
W6UC4	P6UC4	N6UC4	3/8-1/4	13/16	1.80	.170
W6UC5 (+)	P6UC5	N6UC5	3/8-5/16	13/16	1.80	.190
W6UC6	P6UC6	N6UC6	3/8	13/16	1.92	.250
W8UC6	P8UC6	N8UC6	1/2-3/8	1	1.95	.250
W8UC8	P8UC8	N8UC8	1/2	1	2.03	.375
W10UC6 (+)	P10UC6	N10UC6	5/8-3/8	1-18	2.19	.250
W10UC8 (+)	P10UC8	N10UC8	5/8-1/2	1-18	2.24	.375
W10UC10 (+)	P10UC10	N10UC10	5/8	1-18	2.40	.500

(+) Non Standard. see page XX for information on non-standard products.