



Mini Ball Valves Series 200/608/609

MATERIALS OF CONSTRUCTION	
VALVE BODY:	BRASS CHROME PLATED
BALL:	BRASS CHROME PLATED
SEATS/SEALS:	PTFE
STEM SEAL:	VITON
HANDLE:	608/609 – POLYAMIDE WEDGE 200 – POLYAMIDE LEVER

MV200 PRESSURE AND TEMPERATURE RANGE	
PRESSURE RANGE	200 PSI
TEMPERATURE RANGE	0° TO +200°F

MV 608/609 PRESSURE AND TEMPERATURE RANGE	
PRESSURE RANGE	450 PSI
TEMPERATURE RANGE	0° TO +200°F



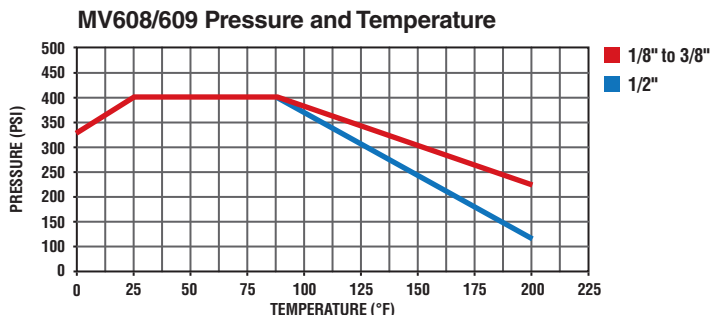
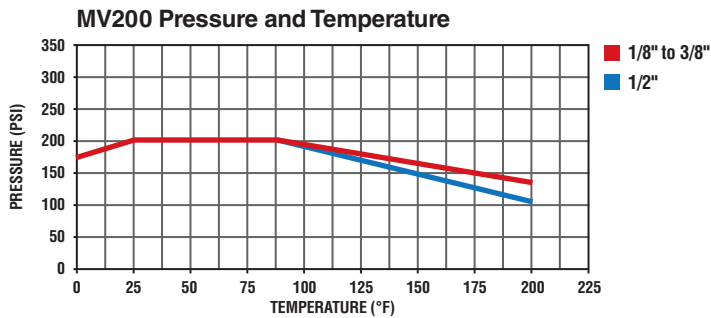
STYLE	TYPE	SIZE
MV	608 / 609	-2
STYLE	MV-MINI VALVE	
TYPE	608 - MALE / FEMALE 609 - FEMALE / FEMALE	
HANDLE COLOR	MV200 FEATURES A BLACK LEVER HANDLE MV608/MV609 FEATURES-YELLOW WEDGE HANDLES	
SIZE	2-1/8", 4-1/4", 6-3/8", 8-1/2"	

Parker's industrial ball valve product line is intended for general purpose use. Please be aware that ball valves are intended for use in the fully open or closed positions. Depending on application conditions, throttling of the valve may result in premature seal failure and/or inability to turn the valve handle.

For use on water and air service lines on capital equipment and plant design plumbing that require total shutoff capability.

STYLE	TYPE	SIZE
MV	200	-2
STYLE	MV-MINI VALVE	
TYPE	200 - FEMALE / FEMALE LEVER HANDLE	
SIZE	2-1/8", 4-1/4", 6-3/8", 8-1/2"	

FLOW DATA			
VALVE SIZE	MV200 CV	MV608 CV	MV609 CV
1/8	1.3	1.2	1.4
1/4	4.0	5.8	4.3
3/8	3.7	3.9	3.6
1/2	5.8	5.6	6.0

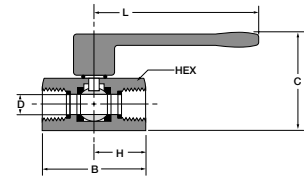


SPECIFICATIONS	
OPERATING INSTRUCTIONS	QUARTER TURN IS "ON" OR "OFF" (PROVIDES POSITIVE STOP ACTION FOR FULL SHUTOFF.)

K

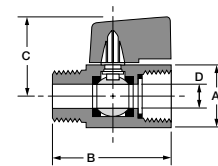
Female Pipe Ends, Lever Handle, Mini Ball Valve MV200

PART NO.	PIPE THREAD	HEX	B	C	H	L	FLOW DIA. D
MV200-2	1/8	.83	1.71	1.20	.91	2.83	.31
MV200-4	1/4	.83	1.71	1.20	.91	2.83	.31
MV200-6	3/8	.83	1.71	1.20	.91	2.83	.31
MV200-8	1/2	.98	2.11	1.28	1.10	2.83	.39



Male-Female Pipe Ends, Compact Handle, Mini Ball Valve MV608

PART NO.	PIPE THREAD	A HEX	B	C	FLOW DIA. D
MV608-2	1/8	.83	1.72	1.22	.20
MV608-4	1/4	.83	1.72	1.22	.31
MV608-6	3/8	.83	1.72	1.22	.31
MV608-8	1/2	.98	2.11	1.30	.39



Female Pipe Ends, Compact Handle, Mini Ball Valve MV609

PART NO.	PIPE THREAD	A HEX	B	C	FLOW DIA. D
MV609-2	1/8	.83	1.71	1.22	.24
MV609-4	1/4	.83	1.71	1.22	.31
MV609-6	3/8	.83	1.71	1.22	.31
MV609-8	1/2	.98	2.11	1.30	.39
MV609-6-4	3/8X1/4	.83	1.71	1.22	.31

