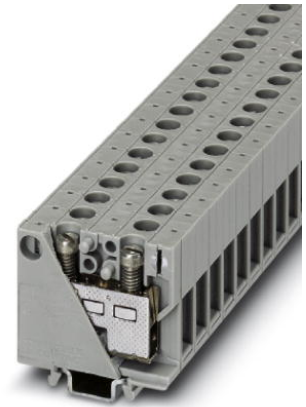


## MBK 10


Order No.: 1402018



<http://eshop.phoenixcontact.de/phoenix/treeViewClick.do?UID=1402018>

Feed-through modular terminal block, Connection method: Screw connection, Width: 7.5 mm, Color: gray, Mounting type: NS 15

### Commercial data

GTIN (EAN)	 4 017918 020750
sales group	A100
Pack	50 pcs.
Customs tariff	85369010

### Product notes

WEEE/RoHS-compliant since:  
01/01/2003



<http://www.download.phoenixcontact.com>  
Please note that the data given here has been taken from the online catalog. For comprehensive information and data, please refer to the user documentation. The General Terms and Conditions of Use apply to Internet downloads.

### Technical data

#### General

Number of levels	1
Number of connections	2
Color	gray
Insulating material	PA

**Dimensions**

Width	7.5 mm
Length	33 mm
Height NS 35/7.5	32.5 mm

**Technical data**

Connection in acc. with standard	IEC 60947-7-1
Nominal current $I_N$	61 A
Nominal voltage $U_N$	500 V
Open side panel	nein

**Connection data**

Conductor cross section stranded min.	0.5 mm <sup>2</sup>
Conductor cross section stranded max.	6 mm <sup>2</sup>
Connection method	Screw connection

**Certificates / Approvals**

Certification

BV, CSA, CUL, GOST, LR, NK, UL

**Accessories**

Item	Designation	Description
<b>Assembly</b>		
1413227	ATP-MBK	Partition plate, Length: 42.5 mm, Width: 2.5 mm, Height: 41 mm, Color: gray
1401637	E/MBK	End clamp, width: 6.2 mm, color: gray
1401682	NS 15 PERF 2000MM	DIN rail, material: steel, perforated, height 5.5 mm, width 15 mm, length: 2 m
1401695	NS 15 UNPERF 2000MM	DIN rail, material: Steel, unperforated, height 5.5 mm, width 15 mm, length: 2 m

**Bridges**

0801157	EB 2- BK 4	Insertion bridge, 2-pos., for strip terminal block, BK 4
0801144	EB 3- BK 4	Insertion bridge, 3-pos., for strip terminal block, BK 4

MBK 10 Order No.: 1402018

<http://eshop.phoenixcontact.de/phoenix/treeViewClick.do?UID=1402018>

---

0801131	EB 10- BK 4	Insertion bridge, 10-pos., for strip terminal block, BK 4
---------	-------------	---

**Address**

PHOENIX CONTACT Inc., USA  
586 Fulling Mill Road  
Middletown, PA 17057, USA  
Phone (800) 888-7388  
Fax (717) 944-1625  
<http://www.phoenixcon.com>



© 2011 Phoenix Contact  
Technical modifications reserved;