

SACC-DSIV-MS-5CON-L180SCOTHRSH

Order No.: 1439968


<http://eshop.phoenixcontact.de/phoenix/treeViewClick.do?UID=1439968>

Sensor/actuator flush-type connector, connector, 5-pos., M12
SPEEDCON, shielded, A-coded, rear/screw mounting with M12
thread, with straight THR solder connection

**Product notes**

WEEE/RoHS-compliant since:
12/01/2008

**Commercial data**

GTIN (EAN)	 4 046356 476683
sales group	D125
Pack	60 pcs.
Customs tariff	85366990
Catalog page information	Page 387 (PC-2011)

[http://](http://www.download.phoenixcontact.com)

www.download.phoenixcontact.com
Please note that the data given
here has been taken from the
online catalog. For comprehensive
information and data, please refer
to the user documentation. The
General Terms and Conditions of
Use apply to Internet downloads.

Technical data**General data**

Rated current at 40°C	4 A
Rated voltage	250 V
Number of positions	4
Volume resistance	≤ 3 mΩ

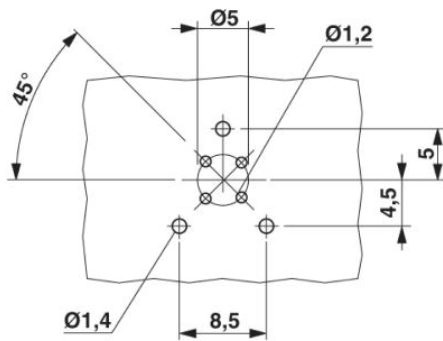
Insulation resistance	≥ 100 MΩ
Ambient temperature (operation)	-25 °C ... 85 °C (Male connector / female connector)

General characteristics

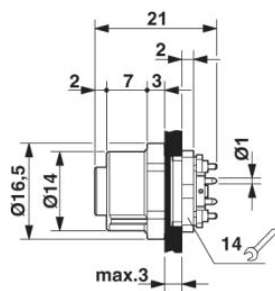
Coding	A - standard
Surge voltage category	II
Pollution degree	3
Degree of protection	IP67
Mounting type	Rear mounting M12 x 1 With flat nut
Connection method	THR solder connection
Status display	No

Diagrams/Drawings

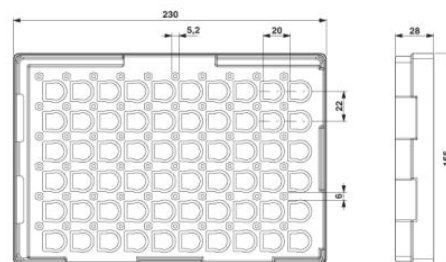
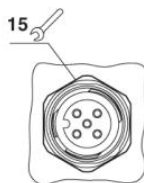
Drilling plan/solder pad geometry



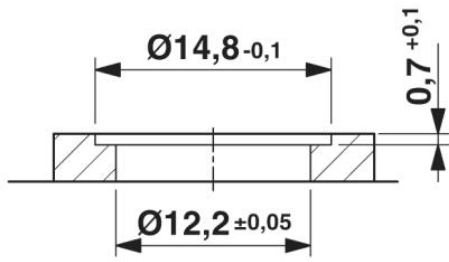
Dimensioned drawing



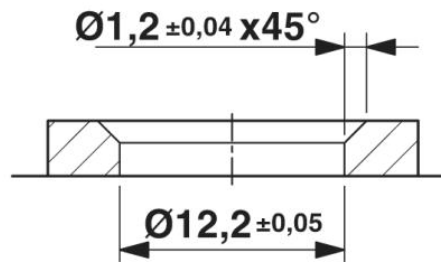
M12 flush-type connector



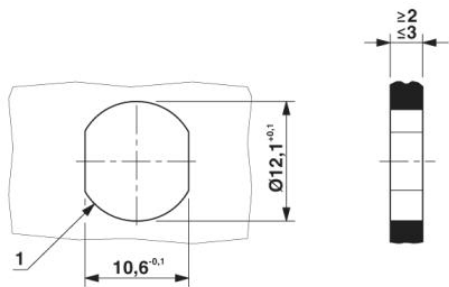
THR tray packaging



Housing cut-out for two-part M12 flush-type connectors with THR and wave soldering connection, version 1

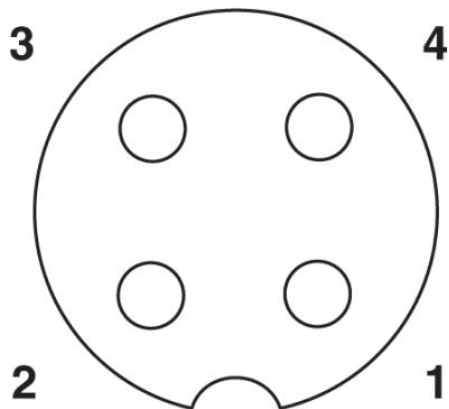


Housing cut-out for two-part M12 flush-type connectors with THR and wave soldering connection, version 2



Housing cutout for M12 fastening thread, mounting panel with feed-through hole (alternative with surface as protection against rotation)

Schematic diagram



Pin assignment M12 socket, 4-pos., A-coded, view female side

Address

PHOENIX CONTACT Deutschland GmbH
Flachmarktstr. 8
32825 Blomberg, Germany
Phone +49 5235 3 12000
Fax +49 5235 3 41200
<http://www.phoenixcontact.de>



© 2011 Phoenix Contact
Technical modifications reserved;