

PLUSCON device

Modular rectangular connectors

Modular rectangular connectors for signals, data, and power

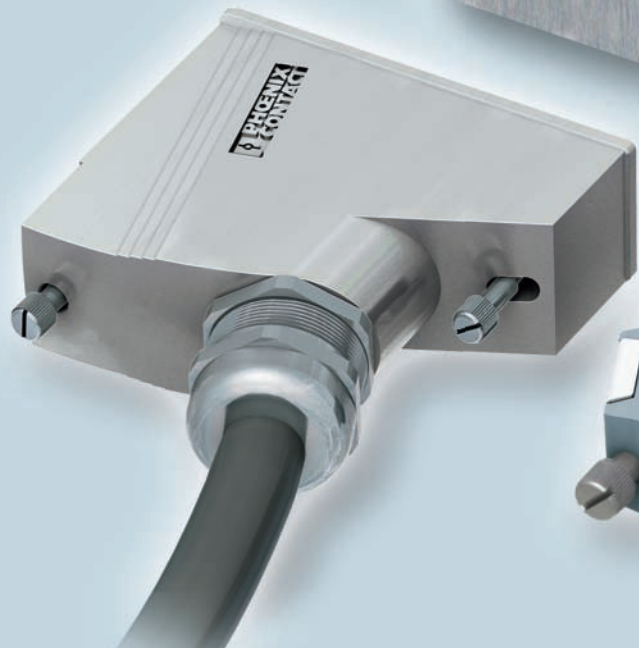
The PLUSCON device connector system offers a compact connection for use with devices and terminal boxes with a high degree of protection.

The basis of the program consists of modular contact inserts with screw and PCB connection, as well as fixed contact inserts with crimp connection for turned and punched contacts.

With IP68/IP69K protection, the connector system guarantees maximum reliability, even under extreme conditions.

Technical data

- Currents up to 70 A
- Voltages up to 630 V
- IP68/IP69K protection



The right connection technology for every application



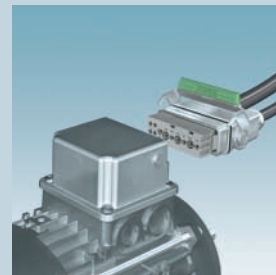
Variable frequency drive



Inverter



Control cabinet

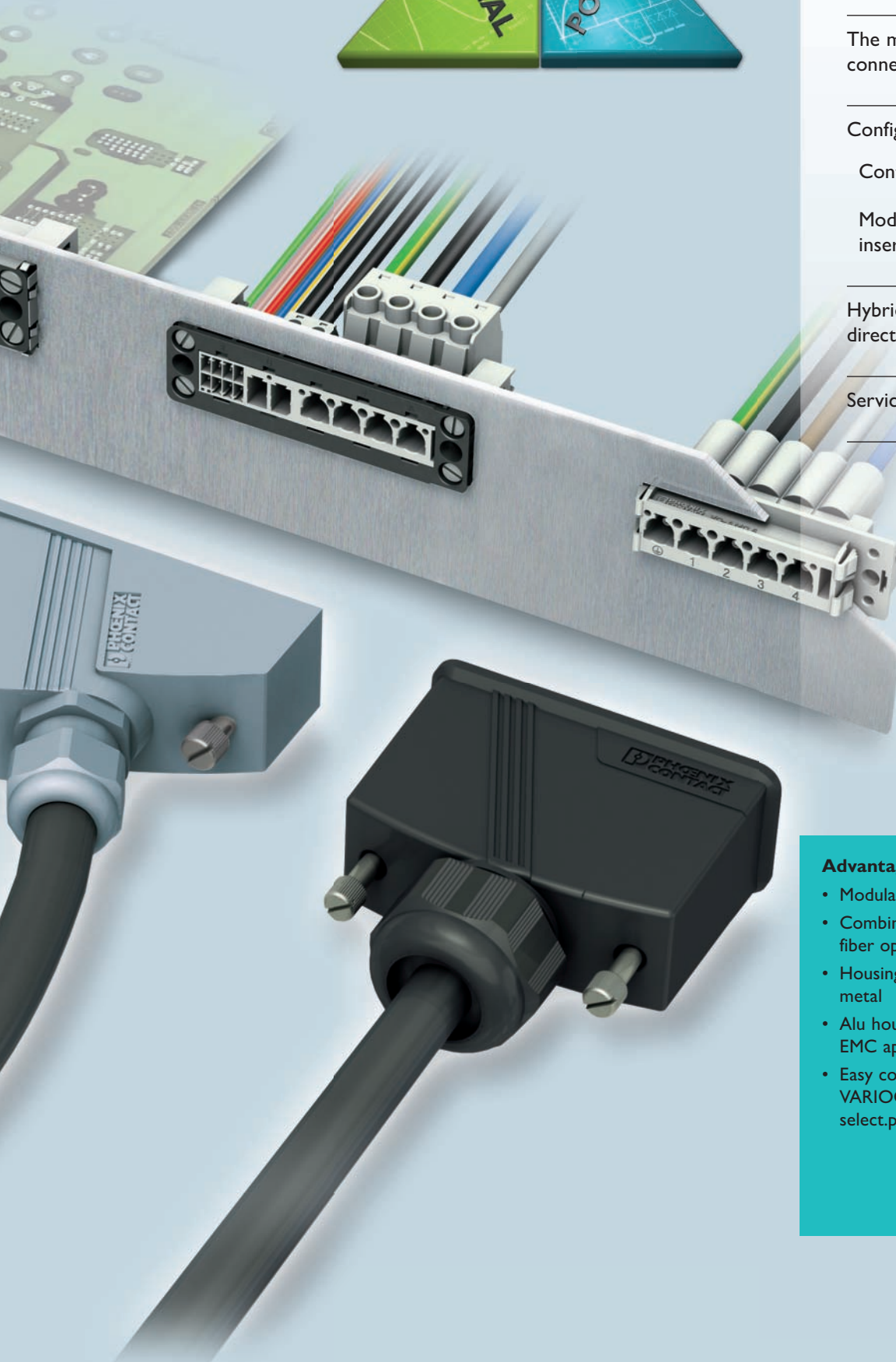


Motor connection



Contents

Introduction	Pages 2 – 3
The modular connector system	Pages 4 – 5
Configuration overview	
Contact insert sets	Pages 6 – 9
Modular contact inserts	Pages 10 – 11
Hybrid connectors for direct motor connection	Pages 12 – 13
Service	Pages 14 – 15



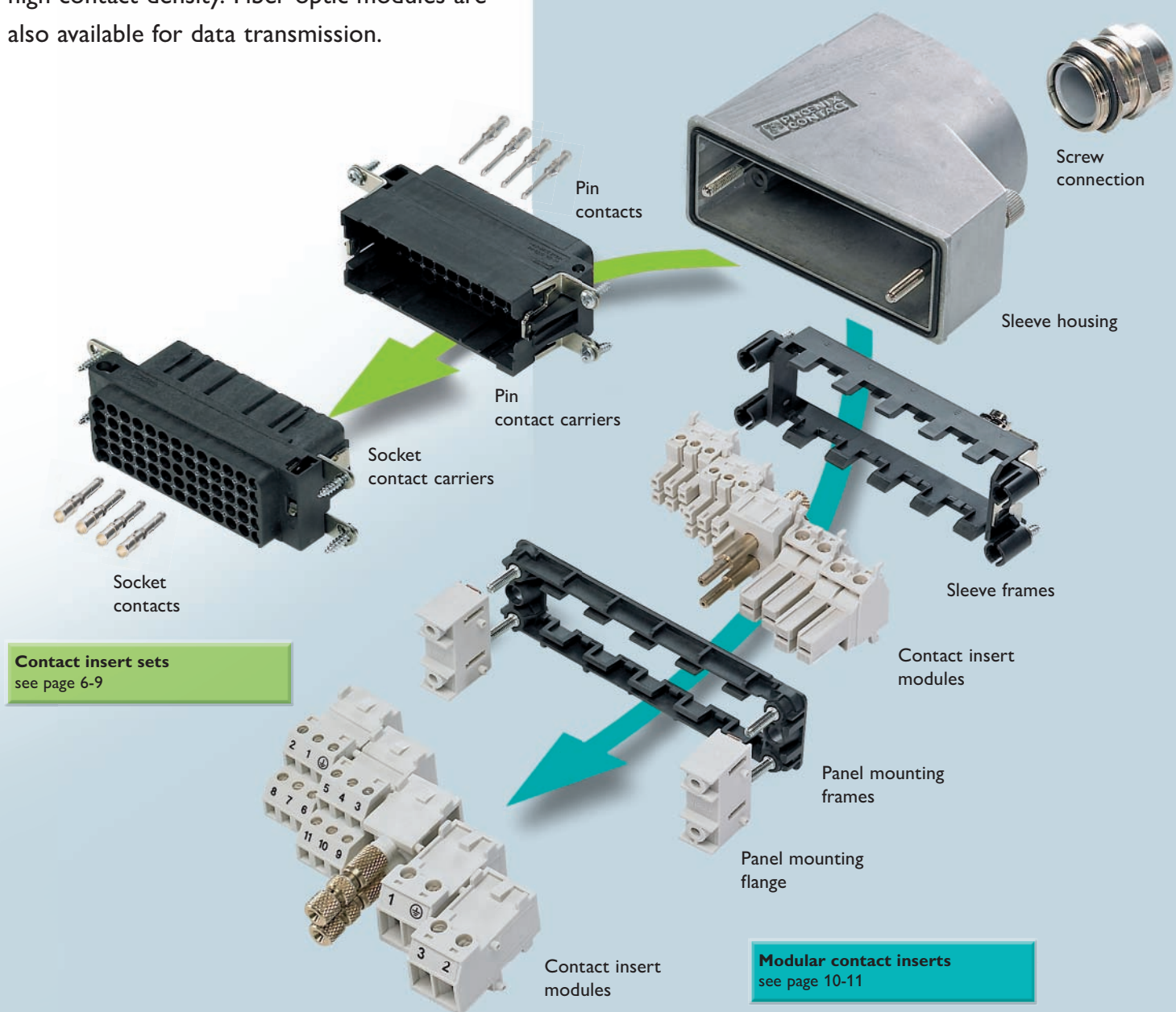
Advantages at a glance

- Modular contact insert structure
- Combination of power, signal, and fiber optics in one connector
- Housing designs made of plastic and metal
- Alu housing suitable for EMC applications
- Easy configuration via VARIOCON selector: select.phoenixcontact.com

The modular connector system with a compact design

The PLUSCON device product range enables power and signal transmission to be combined in a single connector. The device side can be supplied with screw, crimp or direct PCB connection. Crimp contact inserts are available for applications with a high contact density. Fiber optic modules are also available for data transmission.

You can choose between contact insert sets and modular contact inserts.

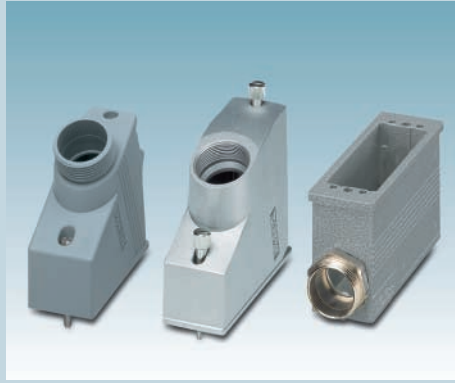


Connectors



Four sizes

Four sizes with a width of 32.4 mm to 77.4 mm



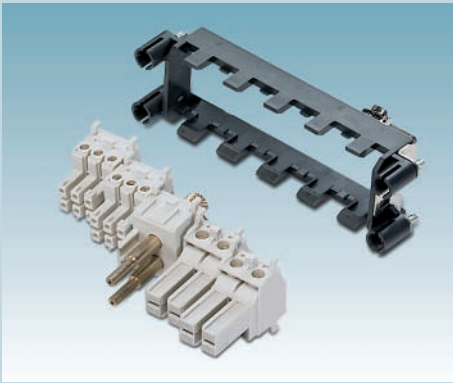
Various materials

Sleeve housing made of plastic and die-cast aluminum, panel mounting base and coupling housing made of die-cast zinc for a range of applications



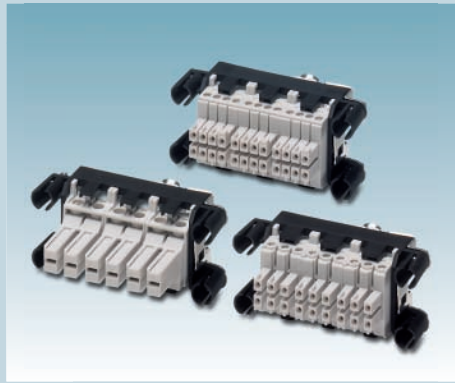
Different cable outlets

Sleeve housings with angled and straight cable outlet make mounting easy



Modular structure

Easy combination of power, signal, and fiber optics in one connector



Pre-assembled contact insert sets

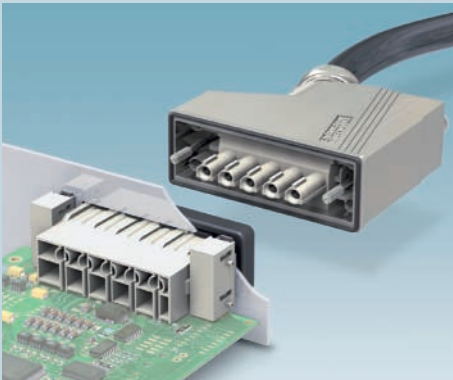
Complete sets consisting of: frame, fixing screws, pre-assembled modules, and coding profiles



High-position contact carriers

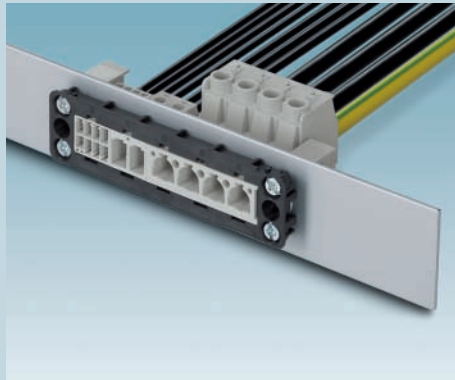
Pin and socket contact carriers for turned and rolled crimp contacts for applications requiring a high contact density

Device connection



PCB connection

Contact inserts with PCB connection for parallel or perpendicular arrangements of the PCB to the device panel



Screw and crimp connection

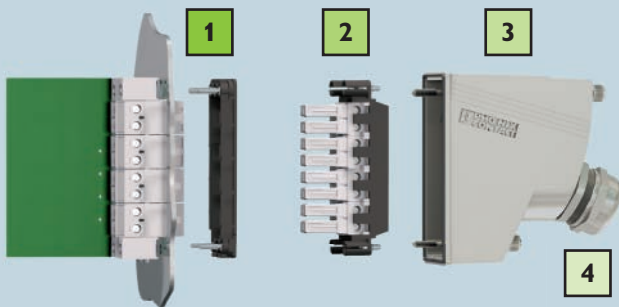
Contact inserts with screw and crimp connection for connecting device-internal litz wires



Panel mounting base and coupling housing

For plug-in cabling directly on the device panel or free-hanging connections

Configuration overview with contact insert sets



Configure your connectors individually
in four steps.

- 1 Choose your contact insert set for the device connection
- 2 Choose your contact insert set for the connectors
- 3 Choose the sleeve housing (see page 8-9)
- 4 Choose the screw connection (see page 8-9)

Device connection						Connectors	
1 Contact insert sets						2 Contact insert sets	
		Screw connection	PCB connection	Crimp connection*		Screw connection	
Size	Number of pos./ conductor cross section	Pin	Pin	Contact carriers	Pin contacts	Socket	
VC1	16 x 1.5 mm ²	1607394	Contact insert sets with direct PCB connection can be created from the modular contact inserts (see page 10-11).	–	Single contacts 4 mm ² 1733385	1607239	
	12 x 1.5 mm ²	1607346		–	10 mm ² 1733372	1607191	
	4 x 4 mm ²	1607298		–		1607143	
VC2	24 x 1.5 mm ²	1607407		–		Taped products 4 mm ² 1761467	1607250
	18 x 1.5 mm ²	1607359		–		10 mm ² 1761470	1607202
	6 x 4 mm ²	1607311		–		16 mm ² 1761483	1607154
	4 x 16 mm ²	1607745		1583877			1607467
VC3	32 x 1.5 mm ²	1607418		–		Crimping tools	1607263
	24 x 1.5 mm ²	1607370		–		1743427	1607215
	8 x 4 mm ²	1607322		–		1743430	1607167
	5 x 16 mm ²	1607748		1583878			1607474
VC4	40 x 1.5 mm ²	1607431		–			1607274
	30 x 1.5 mm ²	1607383		–			1607226
	10 x 4 mm ²	1607335		–			1607178
	7 x 16 mm ²	1607751		–			1607481

* Please order crimp contacts separately

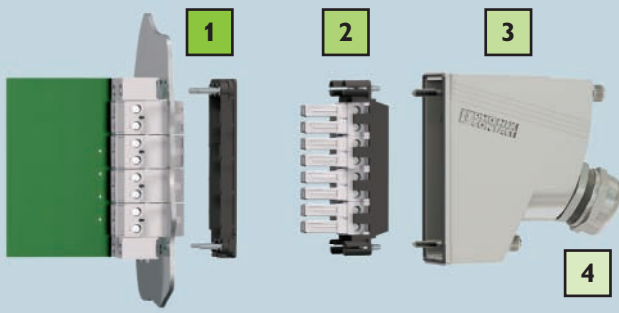
Sets for device connection and connectors

1		2		Contact insert sets			
		Contact carriers for crimp contacts					
							
Size	Number of positions/conductor cross section	Pin for turned/rolled contacts		Socket for turned contacts	Socket for rolled contacts		
VC1	15 x 0.14 mm ² ... 1.5 mm ²	1855018		1855050	1884801		
VC2	30 x 0.14 mm ² ... 1.5 mm ²	1855021		1855063	1884791		
VC3	50 x 0.14 mm ² ... 1.5 mm ²	1855034		1855076	1884788		
VC4	65 x 0.14 mm ² ... 1.5 mm ²	1855047		1855089	1884775		
Crimp contacts*							
		Pin contacts		Socket contacts			
							
Type of contact	Conductor cross section [mm ²]/AWG	Turned contacts	Rolled contacts	Turned contacts	Rolled contacts		
Single contact, silver-plated	0.14/26	1663336	–	1663394	–		
	0.50/20	1663349	–	1663404	–		
	0.75/18	1663352	1884092	1663417	1884128		
	1.00/18	1663365	–	1663420	–		
	1.50/16	1663378	1884089	1663433	1884115		
Single contact, gold-plated	0.14/26	1674901	–	1674969	–		
	0.50/20	1672453	–	1674480	–		
	0.75/18	1674914	–	1674440	–		
	1.00/18	1674888	–	1674943	–		
	1.50/16	1674875	–	1674930	–		
Taped products, silver-plated	0.75/18	–	1884157	–	1884186		
	1.50/16	–	1884144	–	1884173		
Crimping tools		1687419	1884843	1687419	1884843		

* Please order crimp contacts separately








Configuration overview

Sleeve housing and screw connections



Configure your connectors individually in four steps.

- 1 Choose your contact insert set for the device connection (see page 6-7)
- 2 Choose your contact insert set for the connectors (see page 6-7)
- 3 Choose the sleeve housing
- 4 Choose the screw connection

		Sleeve housing						
		Aluminum				Plastic		
Size								
		Metric	For 2 cable glands	Metric	Metric	PG	Integrated PG screw connection	Flat cable outlet
VC1	Screw connection	M20	–	M25	M20	PG16	–	–
	Cylinder head screw	1583597	–	1583607	1852935	1852930	–	1607703
	Knurled screw	1583610	–	1583623	1855097	1855092	–	–
VC2	Screw connection	M20	–	M25	M25	PG21	PG29	–
	Cylinder head screw	1583636	–	1583649	1852948	1852943	1583880	1607680
	Knurled screw	1583652	–	1583665	1855107	1855102	–	–
VC3	Screw connection	M25	M25/M20	M32	M25	PG21	PG29	–
	Cylinder head screw	1583678	1583681	1583694	1852961	1852956	1424368	1607677
	Knurled screw	1583704	1583717	1583720	1855120	1855115	–	–
VC4	Screw connection	M25	M25/M20	M32	M25	PG21	–	–
	Cylinder head screw	1583733	1583746	1583759	1852974	1852969	–	1607693
	Knurled screw	1583762	1583775	1583788	1855133	1855128	–	–

4

Cable glands, metric



Type of thread	Cable diameter [mm]	Plastic	Cable diameter [mm]	Metal	Cable diameter [mm]	EMC
M20	8 ... 13	1690626	9 ... 13	1690561	7 ... 12.5	1690503
		–	11 ... 16	1645998		–
		–	19 ... 27	1646010		–
M25	11 ... 17	1690639	11 ... 16	1690574	9 ... 16.5	1690516
		–	14 ... 21	1646007		–
M32	15 ... 21	1690642	14 ... 21	1690587	11 ... 21	1690529

4

PG cable glands for one cable



Type of thread	Cable diameter [mm]	with plastic pressure screw	with brass pressure screw	EMC screw connection with iris spring
PG16	4 ... 6.5	1854459	1853942	–
	5 ... 8	1853735	1853955	–
	6.5 ... 9.5	1853748	1853968	1854132
	7 ... 10.5	1853751	1853971	1854161
	9 ... 13	1853764	1853984	1854174
	11.5 ... 15.5	1854844	1854857	–
PG21	7 ... 10.5	1853890	1853997	–
	9 ... 13	1853900	1854006	1854200
	9 ... 13	–	–	1854213
	11.5 ... 15.5	1853913	1854035	1854242
	14 ... 18	1853926	1854048	1854255
	17 ... 20.5	1853939	1854051	–

4

PG cable glands for several cables



Type of thread	Cable diameter [mm]	with plastic pressure screw	with brass pressure screw	
PG16	1 x 3/1 x 8	1885376	1885457	–
	1 x 3/1 x 9	1885389	1885460	–
	1 x 6/1 x 8	1885392	1885473	–
	1 x 5/1 x 9	1885402	1885486	–
	1 x 3/2 x 8	1885415	1885499	–
	1 x 5/2 x 6	1885428	1885509	–
	2 x 6/1 x 7	1885431	1885512	–
	3 x 7	1885444	1885525	–
PG21	1 x 6/2 x 9	1885538	1885619	–
	1 x 8.5/1 x 12	1885279	1854970	–
	2 x 4.5/1 x 13	1885282	–	–
	2 x 6/2 x 8	1885554	1885635	–
	2 x 7.2/1 x 10.5	1885567	1885648	–
	3 x 7	1885570	1885651	–
	3 x 9	1885583	1885664	–
	4 x 6.5	1885596	1885677	–
	4 x 8	1885606	1885680	–

Configuration overview with modular contact inserts

The modular contact inserts enable power and signal transmission to be combined in any way in one connector. The size is selected in accordance with the number of modules. The modules can simply be joined together and then inserted in the appropriate frame - and that's it!

Configure your connectors at:
select.phoenixcontact.com

Advantages at a glance

- Maximum flexibility, thanks to free combination of contact inserts
- High reliability, thanks to proven COMBICON connection technology

Configuration examples

Size VC1, 2 module slots



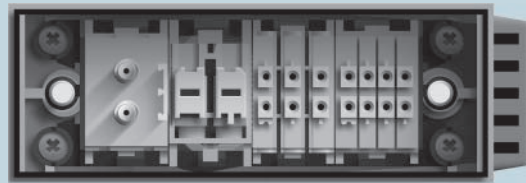
Panel cutout: $19.5^{-0.2}$ mm x $32.4^{+0.3}$ mm

Size VC2, 3 module slots



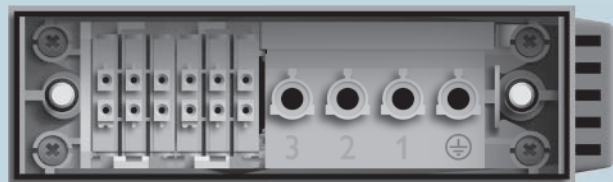
Panel cutout: $19.5^{-0.2}$ mm x $47.4^{+0.3}$ mm

Size VC3, 4 module slots

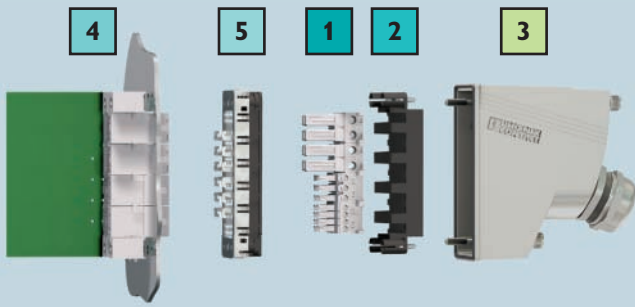


Panel cutout: $19.5^{-0.2}$ mm x $62.4^{+0.3}$ mm

Size VC4, 5 module slots



Panel cutout: $19.5^{-0.2}$ mm x $77.4^{+0.3}$ mm



Configure your connectors individually in five steps.

- 1 Choose your contact inserts for the connectors
- 2 Choose the sleeve frame
- 3 Choose the sleeve housing and screw connection (see page 8-9)
- 4 Choose your contact inserts for the device connection
- 5 Choose the panel mounting frame

Connectors					Device connection					
1 Contact inserts					4 Contact inserts					
Type	Number of positions	Module slots		Order No.		PCB connection				Screw connection
						180°	90°	90° with PE		
FO	2	1		1855814		-	-	-		1885240
1.5 mm ²	6	1		1853476 1583526*		1884872	1853531	-		1854019 1583555*
1.5 mm ²	8	1		1852820 1583536*		1884885	1852833	-		1854022 1583568*
4 mm ²	2	1		1852846 1583513*		1884979	1852859	-		1853528 1583542*
16 mm ²	4+1	3+1		1607488		-	1607509	1607516		1607745
16 mm ²	4+2	3+2		1607495						
16 mm ²	5+1	4+1		1607502						
						-	1607523	1607530		1607748

* Contact insert with PE marking

2 Sleeve frames				5 Panel mounting frames				
	Size	Module slots	Order No.		Size	Module slots	Order No. (standard)	Order No. (with EMC)
	VC2	3	1607062		VC2	3	1852985	1853227
	VC3	4	1607075		VC3	4	1852998	1853230
	VC4	5	1607088		VC4	5	1853007	1853243

Hybrid connectors for direct motor connection

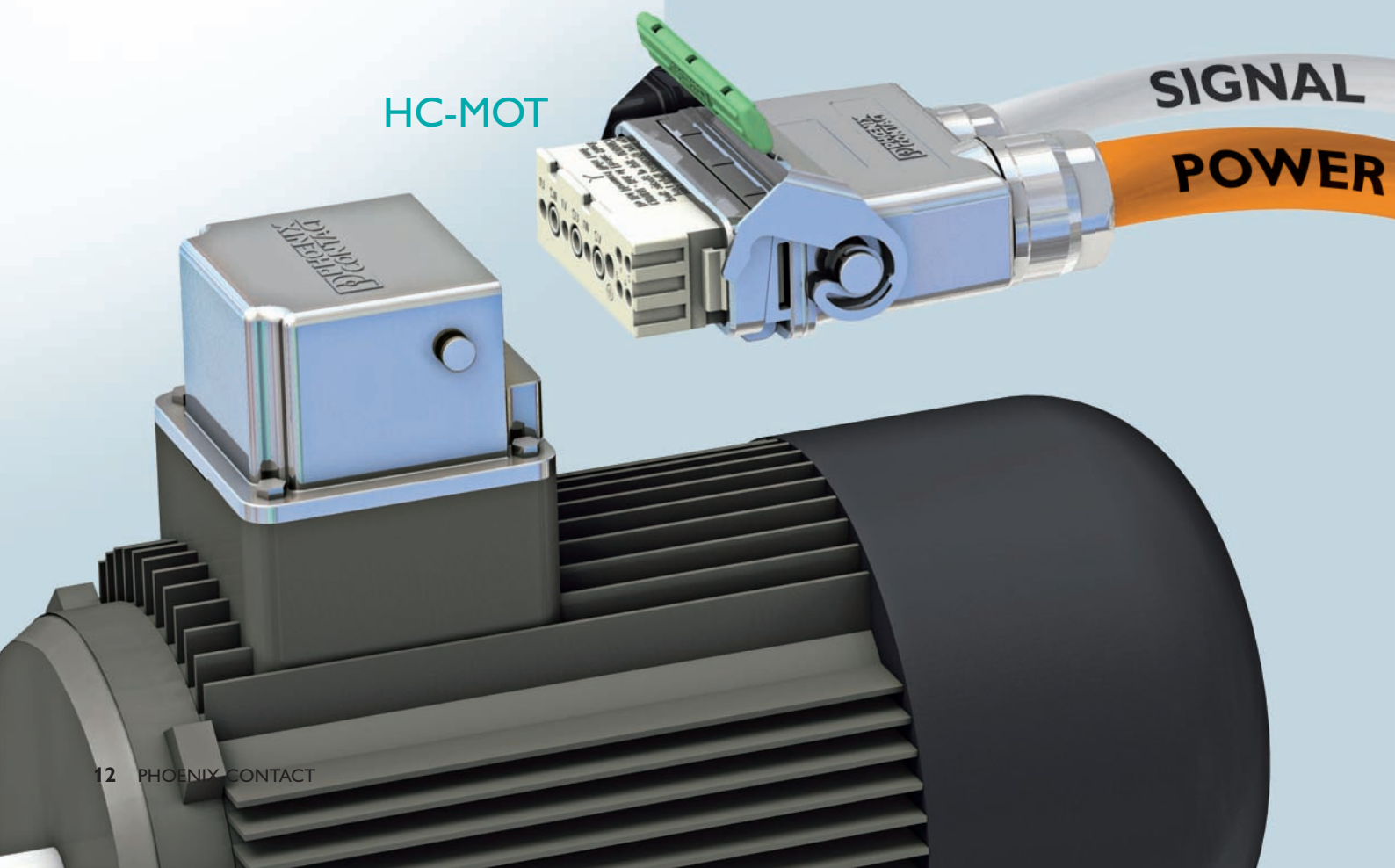
The HC-MOT hybrid connector combines signals and power in the same housing. The two cables are connected to the contact insert in no time at all using a push-in spring connection.

A safe connection between the connector and the motor is established quickly and easily, even under challenging installation conditions, via a vibration-resistant locking latch. This saves a considerable amount of time, particularly during servicing. Thanks to the plug-in star-delta bridge, presetting the drives is now a thing of the past.

Technical data

- Voltage (power) 800/400 V
- Voltage (signal) 250 V
- Current (power/signal) 16.5/2.5 A
- Degree of protection when plugged in: IP67
- Connection cross section (power/signal) 0.5 - 2.5/0.5 - 1.5 mm²

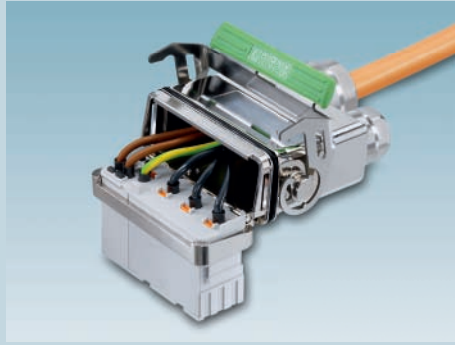
HC-MOT



Advantages at a glance



Integrated star-delta bridge for quick and easy rewiring



Simple and robust locking latch plus quick and reliable push-in spring connection












Signals and power combined in parallel in the same housing

HYBRID



VARIOCON

Ordering data

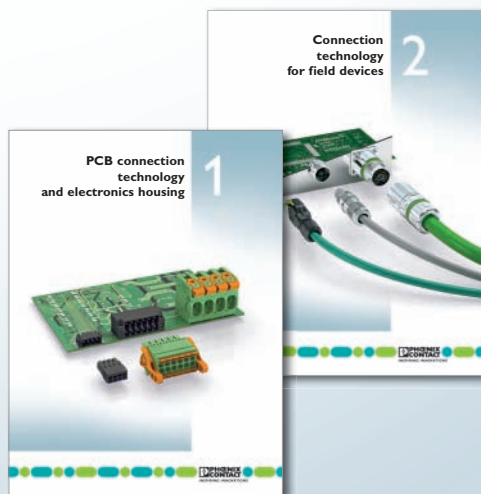
Motor panel mounting base			Sleeve connectors		
	Description	Order No.		Description	Order No.
	Motor-mounted EMC housing	1409053		Sleeve housing with EMC protection	1409066
	Coated protective cover	1409147		IP54 protective cover	1409134
	Crimp contacts (pins) Ø 1.0 mm			Star-delta bridge	1409150
	0.14 mm ² - 0.5 mm ²	1409121			
	0.14 mm ² - 1.0 mm ²	1409082			
	Crimp contacts (pins) Ø 2.0 mm			Coding profile	1600027
	0.35 mm ² - 1.0 mm ²	1409118			
	1.5 mm ² - 2.5 mm ²	1409095			
	Crimping pliers for contacts Ø 1 mm/Ø 2 mm	1212620			

Combine the HC-MOT and VARIOCON hybrid connectors from the motor to the frequency inverter.

More than just the standard

Our service – added value for you

Our extensive housing and connector range features a variety of options for designing state-of-the-art devices. From color versions, to printing, right through to special packaging, we can provide you with almost anything – even brand new product developments.



Our new catalogs are here – order them today or visit our website: phoenixcontact.com

Unique variety as standard

With more than 50,000 products, we offer you a full range of device connection technology for signals, data, and power – from miniature connectors right through to high-current feed-through terminal blocks.



Flexible versions

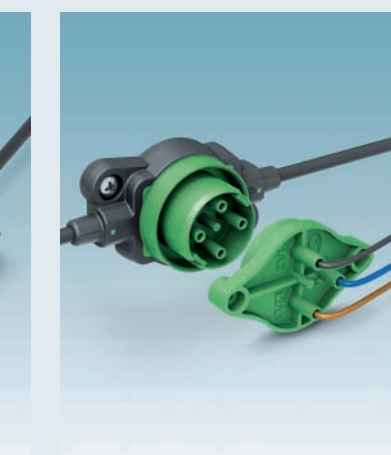
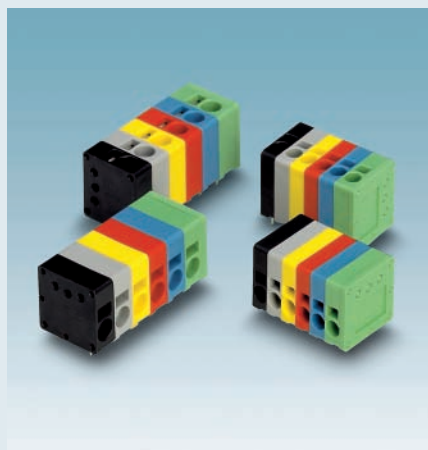
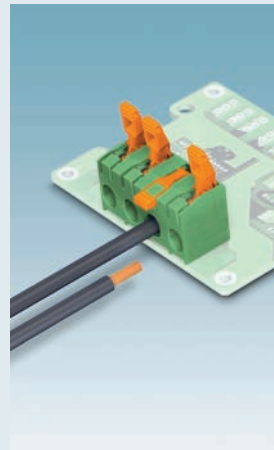
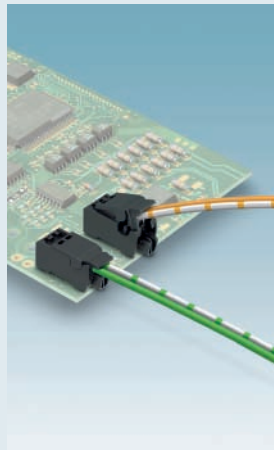
Whether it's individual colors, modern special printing, a specific number of contacts or complete cable assembly – our service centers will be happy to support you in implementing your requirements.



Innovation expertise

Benefit from our extensive development and manufacturing expertise for your individual solution – right from the initial idea through to series production.







Always up-to-date, always available to you. Here you'll find everything on our products, solutions and service:

phoenixcontact.net

Product range

- Cables and connectors
- Controllers and PLCs
- DIN rail power supplies and UPS
- Electronic reversing contactors and motor control
- Electronics housing
- Ethernet networks
- Fieldbus components and systems
- Functional safety
- HMIs and industrial PCs
- I/O systems
- Industrial communication technology
- Industrial lighting
- Installation and mounting material
- Marking and labeling
- Measurement and control technology
- Modular terminal blocks
- Monitoring and signaling
- PCB terminal blocks and PCB connectors
- Plug connectors
- Protective devices
- Relays
- Sensor cables and connectors
- Software
- Surge protection devices
- System cabling for DCS and PLC
- Tools
- Wireless data communication

PHOENIX CONTACT GmbH & Co. KG
32825 Blomberg, Germany
Phone: +49 (0) 52 35 3-00
Fax: +49 (0) 52 35 3-4 12 00
phoenixcontact.net