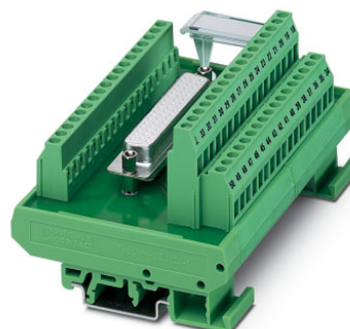


# FLKM-D50 SUB/S

Order No.: 2281157

The illustration shows the version FLKM-D50 SUB/B




<http://eshop.phoenixcontact.de/phoenix/treeViewClick.do?UID=2281157>

VARIOFACE module, with screw connection and D-Subminiature pin strip, for mounting on NS 35/7.5 or NS 32, 50-pos.



## Commercial data

GTIN (EAN)	 4 017918 054601
sales group	I011
Pack	5 pcs.
Customs tariff	85369010
Catalog page information	Page 225 (IF-2002)

## Product notes

WEEE/RoHS-compliant since:  
03/31/2006



<http://www.download.phoenixcontact.com>  
Please note that the data given here has been taken from the online catalog. For comprehensive information and data, please refer to the user documentation. The General Terms and Conditions of Use apply to Internet downloads.

## Technical data

### General data

Nominal voltage $U_N$	125 V AC/DC
Max. current carrying capacity per branch	2.5 A
	1.5 A (with even load on all branches)
Number of positions	50

Width	112.5 mm
Height	77 mm
Depth	58.5 mm
Ambient temperature (operation)	-20 °C ... 50 °C
Ambient temperature (storage/transport)	-20 °C ... 70 °C
Test voltage	800 V (50 Hz, 1 min.)
Mounting position	Any
Standards/regulations	IEC 60664
	IEC 60664 A
	DIN VDE 0110
	DIN VDE 0160 (in parts)
Pollution degree	2
Surge voltage category	II

#### Connection data

Connection 1	PCB connection
Connection in acc. with standard	IEC / EN
Connection method	Screw connection
Conductor cross section solid min.	0.2 mm <sup>2</sup>
Conductor cross section solid max.	4 mm <sup>2</sup>
Conductor cross section stranded min.	0.2 mm <sup>2</sup>
Conductor cross section stranded max.	2.5 mm <sup>2</sup>
Conductor cross section AWG/kcmil min.	24
Conductor cross section AWG/kcmil max	12
Stripping length	8 mm
Screw thread	M3
Connection 2	D-SUB connection
Connection method	Pluggable
Number of positions	50

#### Certificates / Approvals



Certification

CUL, GOST, UL

Accessories		
Item	Designation	Description
<b>Cable/conductor</b>		
2302421	CABLE D-SUB-B-B-S/.../.../...	Shielded round cable, assembled with two D-SUB female connectors, variable cable length
2302340	CABLE D-SUB-S/.../.../...	Shielded round cable, assembled with one D-SUB male and one female connector, variable cable length
2926292	CABLE-D-50SUB/F/OE/0,25/S/0,5M	Shielded cable with a 50-pos. D-SUB female connector and one open end. The individual wires are labeled 1 to 50 and fitted with ferrules. The braided shield is routed to a separate cable end. Cable length: 0.5 m.
2926302	CABLE-D-50SUB/F/OE/0,25/S/1,0M	Shielded cable with a 50-pos. D-SUB female connector and one open end. The individual wires are labeled 1 to 50 and fitted with ferrules. The braided shield is routed to a separate cable end. Cable length: 1 m.
2926315	CABLE-D-50SUB/F/OE/0,25/S/1,5M	Shielded cable with a 50-pos. D-SUB female connector and one open end. The individual wires are labeled 1 to 50 and fitted with ferrules. The braided shield is routed to a separate cable end. Cable length: 1.5 m.
2926328	CABLE-D-50SUB/F/OE/0,25/S/2,0M	Shielded cable with a 50-pos. D-SUB female connector and one open end. The individual wires are labeled 1 to 50 and fitted with ferrules. The braided shield is routed to a separate cable end. Cable length: 2 m.
2926331	CABLE-D-50SUB/F/OE/0,25/S/3,0M	Shielded cable with a 50-pos. D-SUB female connector and one open end. The individual wires are labeled 1 to 50 and fitted with ferrules. The braided shield is routed to a separate cable end. Cable length: 3 m.
2926344	CABLE-D-50SUB/F/OE/0,25/S/4,0M	Shielded cable with a 50-pos. D-SUB female connector and one open end. The individual wires are labeled 1 to 50 and fitted with ferrules. The braided shield is routed to a separate cable end. Cable length: 4 m.
2926357	CABLE-D-50SUB/F/OE/0,25/S/6,0M	Shielded cable with a 50-pos. D-SUB female connector and one open end. The individual wires are labeled 1 to 50 and fitted with ferrules. The braided shield is routed to a separate cable end. Cable length: 6 m.
2302269	CABLE-D50SUB/B/S/ 50/ KONFEK/S	Round shielded cable set, with 50-pos. D-SUB female and male connectors, cable length: 0.5 m
2302272	CABLE-D50SUB/B/S/100/ KONFEK/S	Round shielded cable set, with 50-pos. D-SUB female and male connectors, cable length: 1 m
2302285	CABLE-D50SUB/B/S/150/ KONFEK/S	Round shielded cable set, with 50-pos. D-SUB female and male connectors, cable length: 1.5 m
2302298	CABLE-D50SUB/B/S/200/ KONFEK/S	Round shielded cable set, with 50-pos. D-SUB female and male connectors, cable length: 2 m
2302308	CABLE-D50SUB/B/S/300/ KONFEK/S	Round shielded cable set, with 50-pos. D-SUB female and male connectors, cable length: 3 m

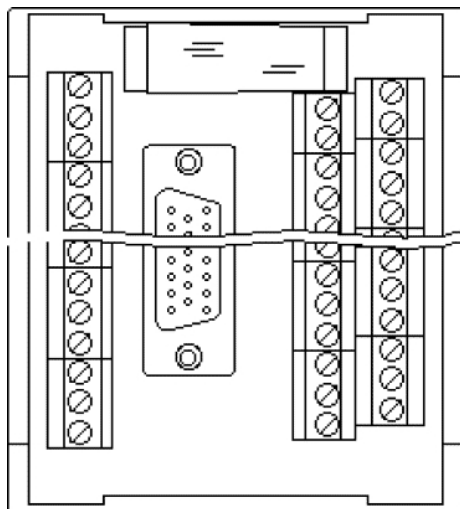
2302311	CABLE-D50SUB/B/S/400/ KONFEK/S	Round shielded cable set, with 50-pos. D-SUB female and male connectors, cable length: 4 m
2302324	CABLE-D50SUB/B/S/600/ KONFEK/S	Round shielded cable set, with 50-pos. D-SUB female and male connectors, cable length: 6 m

**General**

2900908	CABLE-D-50SUB-F-OE-0,25- S/...	Shielded cable with a 50-pos. D-SUB female connector and one open end. The individual wires are labeled 1 to 50 and fitted with ferrules. The braided shield is routed to a separate cable end. Cable length: variable.
---------	-----------------------------------	---

**Diagrams/Drawings**

Schematic diagram



**Address**

PHOENIX CONTACT Inc., USA  
586 Fulling Mill Road  
Middletown, PA 17057, USA  
Phone (800) 888-7388  
Fax (717) 944-1625  
<http://www.phoenixcon.com>



© 2011 Phoenix Contact  
Technical modifications reserved;