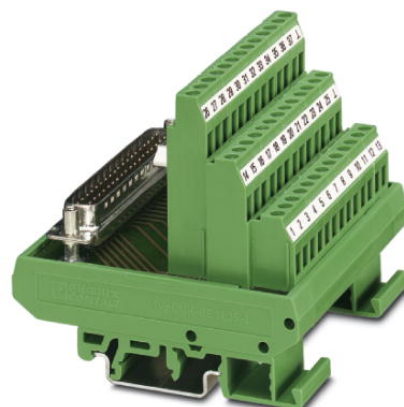


FLKMS-D37 SUB/S (1-37)

Order No.: 2287630




<http://eshop.phoenixcontact.de/phoenix/treeViewClick.do?UID=2287630>

VARIOFACE module, with screw connection and D-Subminiature pin strip, for mounting on NS 35/7.5 or NS 32, 37-pos.



Commercial data

GTIN (EAN)	 4 017918 132774
sales group	I011
Pack	5 pcs.
Customs tariff	85369010
Catalog page information	Page 249 (IF-2007)

Product notes

WEEE/RoHS-compliant since:
03/31/2006



<http://www.download.phoenixcontact.com>
Please note that the data given here has been taken from the online catalog. For comprehensive information and data, please refer to the user documentation. The General Terms and Conditions of Use apply to Internet downloads.

Technical data

General data

Nominal voltage U_N	125 V AC/DC
Max. current carrying capacity per branch	2.5 A
Number of positions	37

Width	79 mm
Height	77 mm
Depth	72 mm
Status display	No
Ambient temperature (operation)	-20 °C ... 50 °C
Ambient temperature (storage/transport)	-20 °C ... 70 °C
Test voltage	800 V AC (50 Hz, 1 min.)
Mounting position	Any
Standards/regulations	IEC 60664 DIN EN 50178 IEC 62103
Pollution degree	2
Surge voltage category	II

Connection data

Connection 1	PCB connection
Connection in acc. with standard	IEC / EN
Connection method	Screw connection
Conductor cross section solid min.	0.2 mm ²
Conductor cross section solid max.	4 mm ²
Conductor cross section stranded min.	0.2 mm ²
Conductor cross section stranded max.	2.5 mm ²
Conductor cross section AWG/kcmil min.	24
Conductor cross section AWG/kcmil max	12
Stripping length	8 mm
Screw thread	M3
Connection 2	D-SUB connection
Connection method	Pluggable

Certificates / Approvals



Certification

GOST

Accessories		
Item	Designation	Description
Cable/conductor		
2302421	CABLE D-SUB-B-B-S/.../.../...	Shielded round cable, assembled with two D-SUB female connectors, variable cable length
2302340	CABLE D-SUB-S/.../.../...	Shielded round cable, assembled with one D-SUB male and one female connector, variable cable length
2926221	CABLE-D-37SUB/F/OE/0,25/S/0,5M	Shielded cable with a 37-pos. D-SUB female connector and one open end. The individual wires are labeled 1 to 37 and fitted with ferrules. The braided shield is routed to a separate cable end. Cable length: 0.5 m.
2926234	CABLE-D-37SUB/F/OE/0,25/S/1,0M	Shielded cable with a 37-pos. D-SUB female connector and one open end. The individual wires are labeled 1 to 37 and fitted with ferrules. The braided shield is routed to a separate cable end. Cable length: 1 m.
2926247	CABLE-D-37SUB/F/OE/0,25/S/1,5M	Shielded cable with a 37-pos. D-SUB female connector and one open end. The individual wires are labeled 1 to 37 and fitted with ferrules. The braided shield is routed to a separate cable end. Cable length: 1.5 m.
2926250	CABLE-D-37SUB/F/OE/0,25/S/2,0M	Shielded cable with a 37-pos. D-SUB female connector and one open end. The individual wires are labeled 1 to 37 and fitted with ferrules. The braided shield is routed to a separate cable end. Cable length: 2 m.
2926263	CABLE-D-37SUB/F/OE/0,25/S/3,0M	Shielded cable with a 37-pos. D-SUB female connector and one open end. The individual wires are labeled 1 to 37 and fitted with ferrules. The braided shield is routed to a separate cable end. Cable length: 3 m.
2926276	CABLE-D-37SUB/F/OE/0,25/S/4,0M	Shielded cable with a 37-pos. D-SUB female connector and one open end. The individual wires are labeled 1 to 37 and fitted with ferrules. The braided shield is routed to a separate cable end. Cable length: 4 m.
2926289	CABLE-D-37SUB/F/OE/0,25/S/6,0M	Shielded cable with a 37-pos. D-SUB female connector and one open end. The individual wires are labeled 1 to 37 and fitted with ferrules. The braided shield is routed to a separate cable end. Cable length: 6 m.
2302191	CABLE-D37SUB/B/S/ 50/KONFEK/S	Round shielded cable set, with 37-pos. D-SUB female and male connectors, cable length: 0.5 m
2302201	CABLE-D37SUB/B/S/100/KONFEK/S	Round shielded cable set, with 37-pos. D-SUB female and male connectors, cable length: 1 m
2302214	CABLE-D37SUB/B/S/150/KONFEK/S	Round shielded cable set, with 37-pos. D-SUB female and male connectors, cable length: 1.5 m
2302227	CABLE-D37SUB/B/S/200/KONFEK/S	Round shielded cable set, with 37-pos. D-SUB female and male connectors, cable length: 2 m
2302230	CABLE-D37SUB/B/S/300/KONFEK/S	Round shielded cable set, with 37-pos. D-SUB female and male connectors, cable length: 3 m

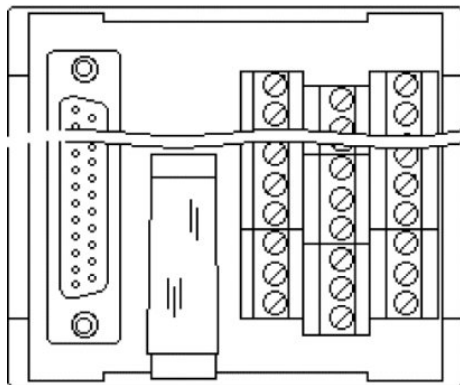
2302243	CABLE-D37SUB/B/S/400/ KONFEK/S	Round shielded cable set, with 37-pos. D-SUB female and male connectors, cable length: 4 m
2302256	CABLE-D37SUB/B/S/600/ KONFEK/S	Round shielded cable set, with 37-pos. D-SUB female and male connectors, cable length: 6 m

General

2900907	CABLE-D-37SUB-F-OE-0,25- S/...	Shielded cable with a 37-pos. D-SUB female connector and one open end. The individual wires are labeled 1 to 37 and fitted with ferrules. The braided shield is routed to a separate cable end. Cable length: variable.
---------	-----------------------------------	---

Diagrams/Drawings

Schematic diagram



Address

PHOENIX CONTACT Inc., USA
586 Fulling Mill Road
Middletown, PA 17057, USA
Phone (800) 888-7388
Fax (717) 944-1625
<http://www.phoenixcon.com>



© 2011 Phoenix Contact
Technical modifications reserved;