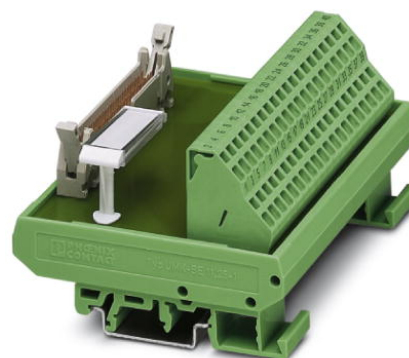


FLKM 14/ZFKDS


Order No.: 2302890

The illustration shows a 40-position version



<http://eshop.phoenixcontact.de/phoenix/treeViewClick.do?UID=2302890>

Standard 1:1 FLK module, with spring-cage connection and flat-ribbon cable plug connector, no. of positions 14

Commercial data	
GTIN (EAN)	 4 017918 941413
Note	Made-to-order
sales group	I001
Pack	1 pcs.
Customs tariff	85369010
Catalog page information	Page 302 (IF-2011)

Product notes

WEEE/RoHS-compliant since:
07/11/2006



<http://www.download.phoenixcontact.com>
Please note that the data given here has been taken from the online catalog. For comprehensive information and data, please refer to the user documentation. The General Terms and Conditions of Use apply to Internet downloads.

Technical data

General data	
Nominal voltage U_N	< 50 V AC 60 V DC
Max. current carrying capacity per branch	1 A
Number of positions	14
Width	45 mm

Height	77 mm
Depth	51 mm
Ambient temperature (operation)	-20 °C ... 50 °C
Ambient temperature (storage/transport)	-20 °C ... 70 °C
Mounting position	Any
Standards/regulations	IEC 60664
	DIN EN 50178
	IEC 62103

Connection data

Connection 1	PCB connection
Connection method	Spring-cage connection
Conductor cross section solid min.	0.2 mm ²
Conductor cross section solid max.	4 mm ²
Conductor cross section stranded min.	0.2 mm ²
Conductor cross section stranded max.	2.5 mm ²
Conductor cross section AWG/kcmil min.	24
Conductor cross section AWG/kcmil max	12
Connection 2	Flat-ribbon cable connection
Connection method	Pluggable

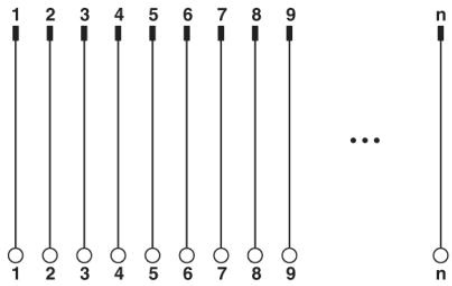
Accessories

Item	Designation	Description
Cable/conductor		
2295729	FLK 14/EZ-DR/ 30/KONFEK	Round cable set, with two 14-pos. socket strips (1:1 connection), for connecting 8 channels, cable length: 0.3 m
2288901	FLK 14/EZ-DR/ 50/KONFEK	Round cable set, with two 14-pos. socket strips (1:1 connection), for connecting 8 channels, cable length: 0.5 m
2296977	FLK 14/EZ-DR/ 50/KONFEK/S	Assembled shielded round cable, with two 14-pos. female connectors (1:1 connection), for connecting 8 channels, length: 0.5 m
2288914	FLK 14/EZ-DR/ 100/KONFEK	Round cable set, with two 14-pos. socket strips (1:1 connection), for connecting 8 channels, cable length: 1 m
2296980	FLK 14/EZ-DR/ 100/KONFEK/S	Assembled shielded round cable, with two 14-pos. female connectors (1:1 connection), for connecting 8 channels, length: 1 m
2288927	FLK 14/EZ-DR/ 150/KONFEK	Round cable set, with two 14-pos. socket strips (1:1 connection), for connecting 8 channels, cable length: 1.5 m

2296993	FLK 14/EZ-DR/ 150/KONFEK/S	Assembled shielded round cable, with two 14-pos. female connectors (1:1 connection), for connecting 8 channels, length: 1.5 m
2288930	FLK 14/EZ-DR/ 200/KONFEK	Round cable set, with two 14-pos. socket strips (1:1 connection), for connecting 8 channels, cable length: 2 m
2297002	FLK 14/EZ-DR/ 200/KONFEK/S	Assembled shielded round cable, with two 14-pos. female connectors (1:1 connection), for connecting 8 channels, length: 2 m
2288943	FLK 14/EZ-DR/ 250/KONFEK	Round cable set, with two 14-pos. socket strips (1:1 connection), for connecting 8 channels, cable length: 2.5 m
2288956	FLK 14/EZ-DR/ 300/KONFEK	Round cable set, with two 14-pos. socket strips (1:1 connection), for connecting 8 channels, cable length: 3 m
2299013	FLK 14/EZ-DR/ 300/KONFEK/S	Assembled shielded round cable, with two 14-pos. female connectors (1:1 connection), for connecting 8 channels, length: 3 m
2288969	FLK 14/EZ-DR/ 350/KONFEK	Round cable set, with two 14-pos. socket strips (1:1 connection), for connecting 8 channels, cable length: 3.5 m
2288972	FLK 14/EZ-DR/ 400/KONFEK	Round cable set, with two 14-pos. socket strips (1:1 connection), for connecting 8 channels, cable length: 4 m
2299026	FLK 14/EZ-DR/ 400/KONFEK/S	Assembled shielded round cable, with two 14-pos. female connectors (1:1 connection), for connecting 8 channels, length: 4 m
2290847	FLK 14/EZ-DR/ 450/KONFEK	Round cable set, with two 14-pos. socket strips (1:1 connection), for connecting 8 channels, cable length: 4,5 m
2290834	FLK 14/EZ-DR/ 500/KONFEK	Round cable set, with two 14-pos. socket strips (1:1 connection), for connecting 8 channels, cable length: 5 m
2290850	FLK 14/EZ-DR/ 550/KONFEK	Round cable set, with two 14-pos. socket strips (1:1 connection), for connecting 8 channels, cable length: 5,5 m
2290863	FLK 14/EZ-DR/ 600/KONFEK	Round cable set, with two 14-pos. socket strips (1:1 connection), for connecting 8 channels, cable length: 6 m
2299039	FLK 14/EZ-DR/ 600/KONFEK/S	Assembled shielded round cable, with two 14-pos. female connectors (1:1 connection), for connecting 8 channels, length: 6 m
2299563	FLK 14/EZ-DR/ 800/KONFEK	Round cable set, with two 14-pos. socket strips (1:1 connection), for connecting 8 channels, cable length: 8 m
2299042	FLK 14/EZ-DR/ 800/KONFEK/S	Assembled shielded round cable, with two 14-pos. female connectors (1:1 connection), for connecting 8 channels, length: 8 m
2299576	FLK 14/EZ-DR/1000/KONFEK	Round cable set, with two 14-pos. socket strips (1:1 connection), for connecting 8 channels, cable length: 10 m
2299055	FLK 14/EZ-DR/1000/KONFEK/S	Assembled shielded round cable, with two 14-pos. female connectors (1:1 connection), for connecting 8 channels, length: 10 m
2295046	FLK EZ-DR-S.../.../...	Round cable, with preassembly, shielded, variable cable length
2295059	FLK EZ-DR.../.../...	Round cable, with preassembly, not shielded, variable cable length

Diagrams/Drawings

Circuit diagram



Address

PHOENIX CONTACT Inc., USA
586 Fulling Mill Road
Middletown, PA 17057, USA
Phone (800) 888-7388
Fax (717) 944-1625
<http://www.phoenixcon.com>



© 2011 Phoenix Contact
Technical modifications reserved;