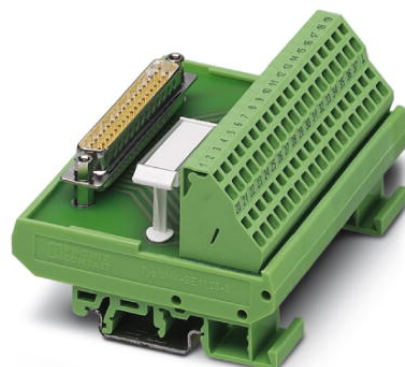


# FLKM-D 9 SUB/S/ZFKDS

Order No.: 2302984

The illustration shows the version FLKM-D37 SUB/S/ZFKDS




<http://eshop.phoenixcontact.de/phoenix/treeViewClick.do?UID=2302984>

Standard 1:1 D-SUB module, with spring-cage connection and D-SUB pin strip, no. of positions 9



## Commercial data

GTIN (EAN)	 4 017918 943950
Note	Made-to-order
sales group	I011
Pack	1 pcs.
Customs tariff	85369010
Catalog page information	Page 308 (IF-2011)

## Product notes

WEEE/RoHS-compliant since:  
07/12/2006



<http://www.download.phoenixcontact.com>  
Please note that the data given here has been taken from the online catalog. For comprehensive information and data, please refer to the user documentation. The General Terms and Conditions of Use apply to Internet downloads.

## Technical data

### General data

Nominal voltage $U_N$	125 V AC/DC
Max. current carrying capacity per branch	2.5 A
	1.5 A (with even load on all branches)

Number of positions	9
Width	33.8 mm
Height	77 mm
Depth	52 mm
Ambient temperature (operation)	-20 °C ... 50 °C
Ambient temperature (storage/transport)	-20 °C ... 70 °C
Mounting position	Any
Standards/regulations	IEC 60664
	DIN EN 50178
	IEC 62103
Pollution degree	2
Surge voltage category	II

**Connection data**

Connection 1	PCB connection
Connection method	Spring-cage connection
Conductor cross section solid min.	0.2 mm <sup>2</sup>
Conductor cross section solid max.	4 mm <sup>2</sup>
Conductor cross section stranded min.	0.2 mm <sup>2</sup>
Conductor cross section stranded max.	2.5 mm <sup>2</sup>
Conductor cross section AWG/kcmil min.	24
Conductor cross section AWG/kcmil max	12
Connection 2	D-SUB connection

**Certificates / Approvals**



Certification

CUL, UL

Accessories		
Item	Designation	Description
<b>Cable/conductor</b>		
2302421	CABLE D-SUB-B-B-S/.../.../...	Shielded round cable, assembled with two D-SUB female connectors, variable cable length
2302340	CABLE D-SUB-S/.../.../...	Shielded round cable, assembled with one D-SUB male and one female connector, variable cable length
2299987	CABLE-D 9SUB/B/S/ 50/ KONFEK/S	Round shielded cable set, with 9-pos. D-SUB female and male connectors, cable length: 0.5 m
2299990	CABLE-D 9SUB/B/S/100/ KONFEK/S	Round shielded cable set, with 9-pos. D-SUB female and male connectors, cable length: 1 m
2300009	CABLE-D 9SUB/B/S/150/ KONFEK/S	Round shielded cable set, with 9-pos. D-SUB female and male connectors, cable length: 1.5 m
2302010	CABLE-D 9SUB/B/S/200/ KONFEK/S	Round shielded cable set, with 9-pos. D-SUB female and male connectors, cable length: 2 m
2302023	CABLE-D 9SUB/B/S/300/ KONFEK/S	Round shielded cable set, with 9-pos. D-SUB female and male connectors, cable length: 3 m
2302036	CABLE-D 9SUB/B/S/400/ KONFEK/S	Round shielded cable set, with 9-pos. D-SUB female and male connectors, cable length: 4 m
2302049	CABLE-D 9SUB/B/S/600/ KONFEK/S	Round shielded cable set, with 9-pos. D-SUB female and male connectors, cable length: 6 m
2926014	CABLE-D- 9SUB/F/OE/0,25/ S/0,5M	Shielded cable with a 9-pos. D-SUB female connector and one open end. The individual wires are labeled 1 to 9 and fitted with ferrules. The braided shield is routed to a separate cable end. Cable length: 0.5 m.
2926027	CABLE-D- 9SUB/F/OE/0,25/ S/1,0M	Shielded cable with a 9-pos. D-SUB female connector and one open end. The individual wires are labeled 1 to 9 and fitted with ferrules. The braided shield is routed to a separate cable end. Cable length: 1 m.
2926030	CABLE-D- 9SUB/F/OE/0,25/ S/1,5M	Shielded cable with a 9-pos. D-SUB female connector and one open end. The individual wires are labeled 1 to 9 and fitted with ferrules. The braided shield is routed to a separate cable end. Cable length: 1.5 m.
2926043	CABLE-D- 9SUB/F/OE/0,25/ S/2,0M	Shielded cable with a 9-pos. D-SUB female connector and one open end. The individual wires are labeled 1 to 9 and fitted with ferrules. The braided shield is routed to a separate cable end. Cable length: 2 m.
2926056	CABLE-D- 9SUB/F/OE/0,25/ S/3,0M	Shielded cable with a 9-pos. D-SUB female connector and one open end. The individual wires are labeled 1 to 9 and fitted with ferrules. The braided shield is routed to a separate cable end. Cable length: 3 m.
2926069	CABLE-D- 9SUB/F/OE/0,25/ S/4,0M	Shielded cable with a 9-pos. D-SUB female connector and one open end. The individual wires are labeled 1 to 9 and fitted with ferrules. The braided shield is routed to a separate cable end. Cable length: 4 m.

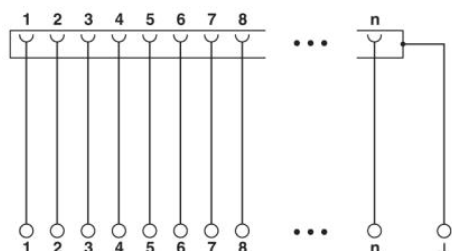
2926072	CABLE-D- 9SUB/F/OE/0,25/S/6,0M	Shielded cable with a 9-pos. D-SUB female connector and one open end. The individual wires are labeled 1 to 9 and fitted with ferrules. The braided shield is routed to a separate cable end. Cable length: 6 m.
---------	--------------------------------	--

**General**

2900903	CABLE-D- 9SUB-F-OE-0,25-S/...	Shielded cable with a 9-pos. D-SUB female connector and one open end. The individual wires are labeled 1 to 9 and fitted with ferrules. The braided shield is routed to a separate cable end. Cable length: variable.
---------	-------------------------------	---

**Diagrams/Drawings**

Circuit diagram



**Address**

PHOENIX CONTACT Inc., USA  
586 Fulling Mill Road  
Middletown, PA 17057, USA  
Phone (800) 888-7388  
Fax (717) 944-1625  
<http://www.phoenixcon.com>



© 2011 Phoenix Contact  
Technical modifications reserved;