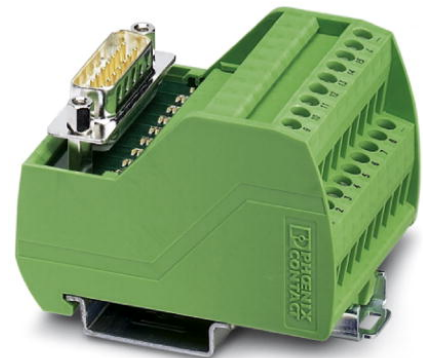



VIP-2/SC/D15SUB/F/LED

Order No.: 2322207

The illustration shows a 15-position version with female insert

<http://eshop.phoenixcontact.de/phoenix/treeViewClick.do?UID=2322207>VARIOFACE module, with screw connection and D-Subminiature
socket strip, for mounting on NS 35/7.5 or NS 32, with LED, 15-pos.**Commercial data**

GTIN (EAN)	 4 046356 451826
sales group	I501
Pack	1 pcs.
Customs tariff	85369010
Catalog page information	Page 307 (IF-2011)

Product notesWEEE/RoHS-compliant since:
04/10/2009

[http://
www.download.phoenixcontact.com](http://www.download.phoenixcontact.com)
Please note that the data given
here has been taken from the
online catalog. For comprehensive
information and data, please refer
to the user documentation. The
General Terms and Conditions of
Use apply to Internet downloads.

Technical data**General data**

Nominal voltage U_N	24 V DC
Max. current carrying capacity per branch	2.5 A
Number of positions	15
Width	50 mm

Height	65.5 mm
Depth	45.1 mm
Status display	LED
Ambient temperature (operation)	-20 °C ... 50 °C
Ambient temperature (storage/transport)	-20 °C ... 70 °C
Mounting position	Any
Standards/regulations	IEC 60664
	DIN EN 50178
	IEC 62103
Pollution degree	2
Surge voltage category	II

Connection data

Connection 1	PCB connection
Connection in acc. with standard	IEC / EN
Connection method	Screw connection
Conductor cross section solid min.	0.2 mm ²
Conductor cross section solid max.	4 mm ²
Conductor cross section stranded min.	0.2 mm ²
Conductor cross section stranded max.	2.5 mm ²
Conductor cross section AWG/kcmil min.	24
Conductor cross section AWG/kcmil max	12
Stripping length	8 mm
Screw thread	M3
Connection 2	D-SUB connection
Connection method	Pluggable
Number of positions	15

Certificates / Approvals



Certification

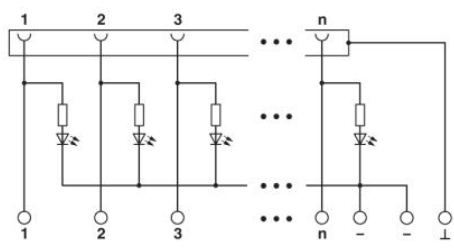
CUL, UL

Accessories

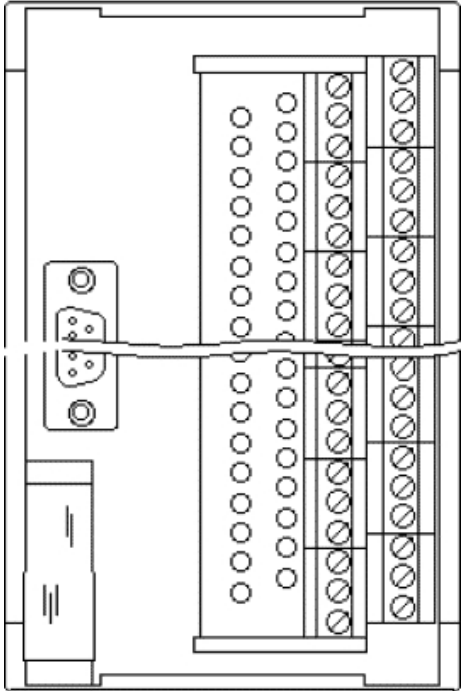
Item	Designation	Description
Cable/conductor		
2302434	CABLE D-SUB-S-S-S/.../.../...	Shielded round cable, assembled with two D-SUB male connectors, variable cable length
2302340	CABLE D-SUB-S/.../.../...	Shielded round cable, assembled with one D-SUB male and one female connector, variable cable length
2302052	CABLE-D15SUB/B/S/ 50/ KONFEK/S	Round shielded cable set, with 15-pos. D-SUB female and male connectors, cable length: 0.5 m
2302065	CABLE-D15SUB/B/S/100/ KONFEK/S	Round shielded cable set, with 15-pos. D-SUB female and male connectors, cable length: 1 m
2302078	CABLE-D15SUB/B/S/150/ KONFEK/S	Round shielded cable set, with 15-pos. D-SUB female and male connectors, cable length: 1.5 m
2302081	CABLE-D15SUB/B/S/200/ KONFEK/S	Round shielded cable set, with 15-pos. D-SUB female and male connectors, cable length: 2 m
2302094	CABLE-D15SUB/B/S/300/ KONFEK/S	Round shielded cable set, with 15-pos. D-SUB female and male connectors, cable length: 3 m
2302104	CABLE-D15SUB/B/S/400/ KONFEK/S	Round shielded cable set, with 15-pos. D-SUB female and male connectors, cable length: 4 m
2302117	CABLE-D15SUB/B/S/600/ KONFEK/S	Round shielded cable set, with 15-pos. D-SUB female and male connectors, cable length: 6 m

Diagrams/Drawings

Circuit diagram



Schematic diagram



Address

PHOENIX CONTACT Inc., USA
586 Fulling Mill Road
Middletown, PA 17057, USA
Phone (800) 888-7388
Fax (717) 944-1625
<http://www.phoenixcon.com>



© 2011 Phoenix Contact
Technical modifications reserved;